



## 28 Wilterna Crescent SMITHFIELD SA

3 2 4

\*For an in-depth look at this home, please click on the 3D tour for a virtual walk-through or copy and paste this link into your browser\*

Virtual Tour Link:  
<https://my.matterport.com/show/?m=6XkXvPGS8YJ>

To submit an offer, please copy and paste this link into your browser:  
<https://www.edgerealty.com.au/buying/make-an-offer/>

Mike Lao, Brendon Ly and Edge Realty RLA256385 are proud to present to the market this easy-care modern abode set on a 790sqm block that offers a life of ease and comfort to those who call it home. All the room you need to move, play and entertain is on offer in the spacious and well-designed single-storey layout while outside, the large pergola and spacious backyard offer endless hours of fun.

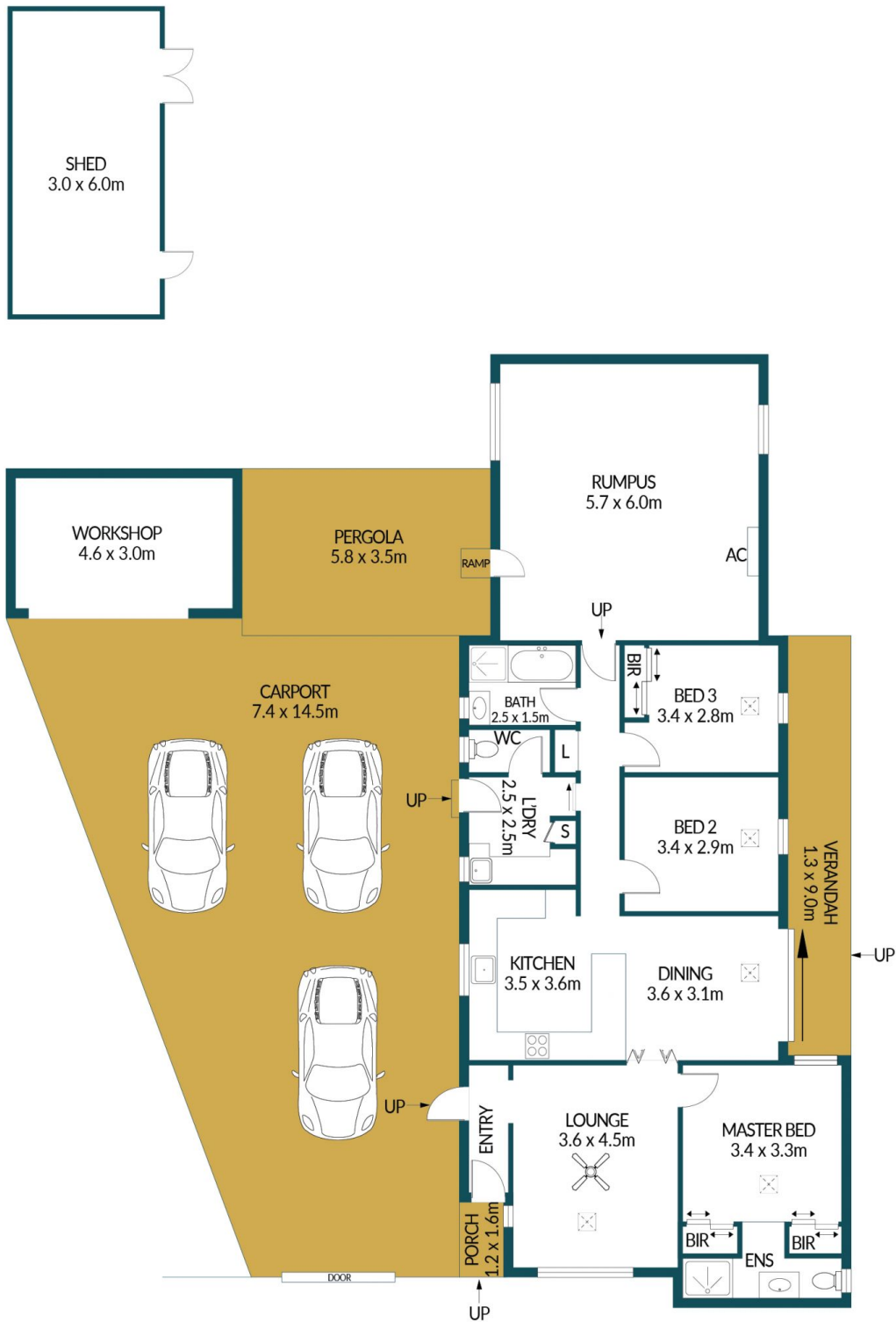
**Price** : \$ 412,800  
**Land Size** : 790 sqm  
**View** : <https://www.edgerealty.com.au/sale/sa/north-north-east-suburbs/smithfield/residential/house/7217244>



**Mike Lao**  
0410390250



**Brendon Ly**  
0447888444



## 28 WILTERNA CRESCENT, SMITHFIELD

### Disclaimer

Plans shown are for marketing purposes only. All dimensions are approximate and not to scale. They are subject to errors and inaccuracies and no liability will be accepted. Interested parties should make their own enquiries. Inclusions and exclusions must be confirmed in the Residential Contract.

### APPROXIMATE DIMENSIONS

LIVING:	132.4m <sup>2</sup>
PERGOLA/CARPORT:	117.2m <sup>2</sup>
PORCH/VERANDAH:	13.6m <sup>2</sup>
WORKSHOP/SHED:	31.8m <sup>2</sup>
TOTAL:	295.0m <sup>2</sup>