



51 Lakeside Drive ANDREWS FARM SA

3 1 2

For an in-depth look at this home, please click on the 3D tour for a virtual walk-through or copy and paste this link into your browser

Virtual <https://my.matterport.com/show/?m=T7UBFSpnQEG> Tour Link:

To submit an offer, please copy and paste this link into your browser:
<https://www.edgerealty.com.au/buying/make-an-offer/>

Mike Lao, Tyson Bennett and Edge Realty RLA256385 are proud to present to the market this well-maintained and comfortable single-level home, situated on a quiet street in Andrews Farm that is sure to capture the attention of a wide range of eager house hunters.

A fully fenced block, striking rendered facade and

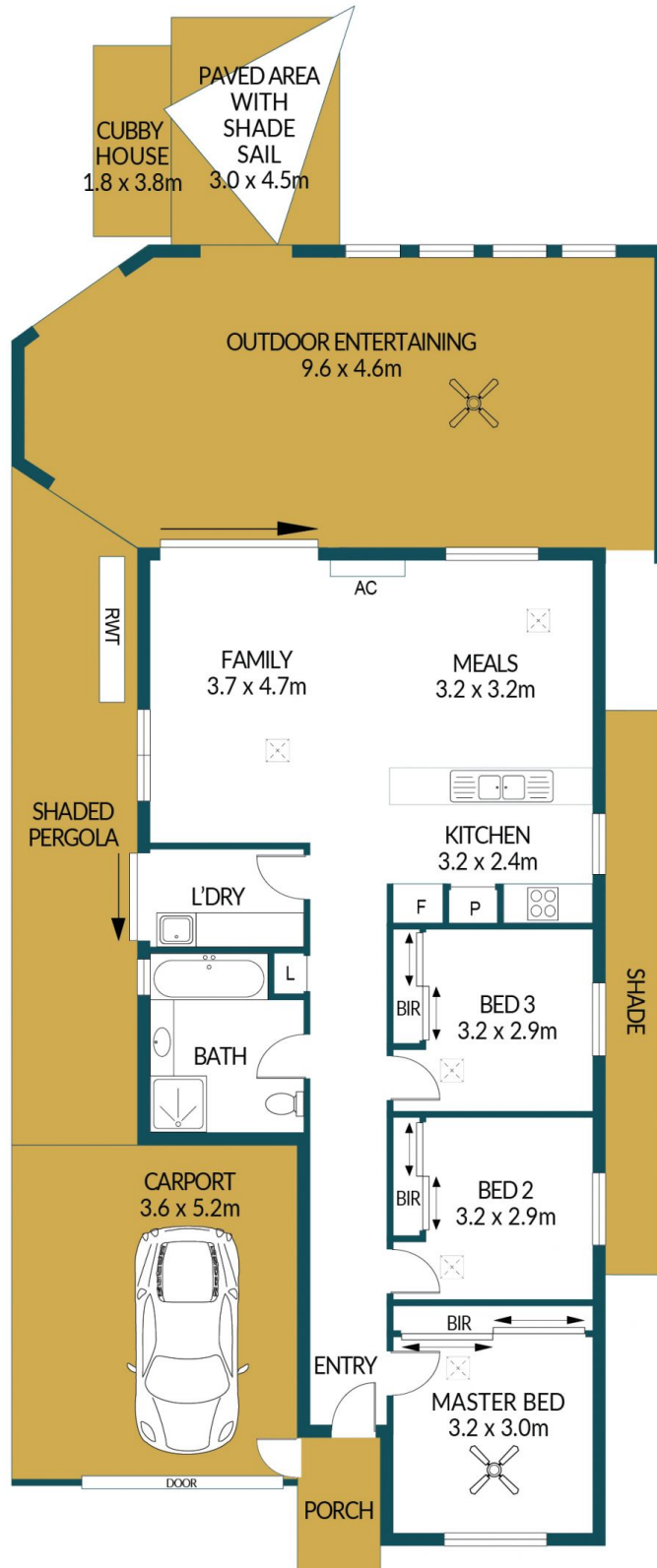
Price : \$ 393,000
Building Size : 123 sqm
Land Size : 301 sqm
View : <https://www.edgerealty.com.au/sale/sa/north-north-east-suburbs/andrews-farm/residential/house/7218632>



Mike Lao
0410390250



Tyson Bennett
0437161997



51 LAKESIDE DRIVE, ANDREWS FARM

Disclaimer

Plans shown are for marketing purposes only. All dimensions are approximate and not to scale. They are subject to errors and inaccuracies and no liability will be accepted. Interested parties should make their own enquiries. Inclusions and exclusions must be confirmed in the Residential Contract.

APPROXIMATE DIMENSIONS

LIVING:	123.3m ²
PERGOLA:	31.0m ²
PORCH/VERANDAH:	32.5m ²
CARPORT:	18.7m ²
TOTAL:	205.5m ²