



22 Gould Road ELIZABETH PARK SA

3 1 2

For an in-depth look at this home, please click on the 3D tour for a virtual walk-through

Virtual Tour Link:
<https://my.matterport.com/show/?m=agdt6wpPFK>

To submit an offer, please copy and paste this link into your browser:
<https://www.edgerealty.com.au/buying/make-an-offer/>

Mike Lao, Tyson Bennett and Edge Realty RLA256385 are proud to present to the market this three-bedroom home situated on a massive 910sqm block and boasting a generously-sized backyard. Set to catch the eye of a wide range of savvy home hunters, including astute investors or buyers looking to occupy, this 1960-built property boasts low-maintenance living in a convenient location.

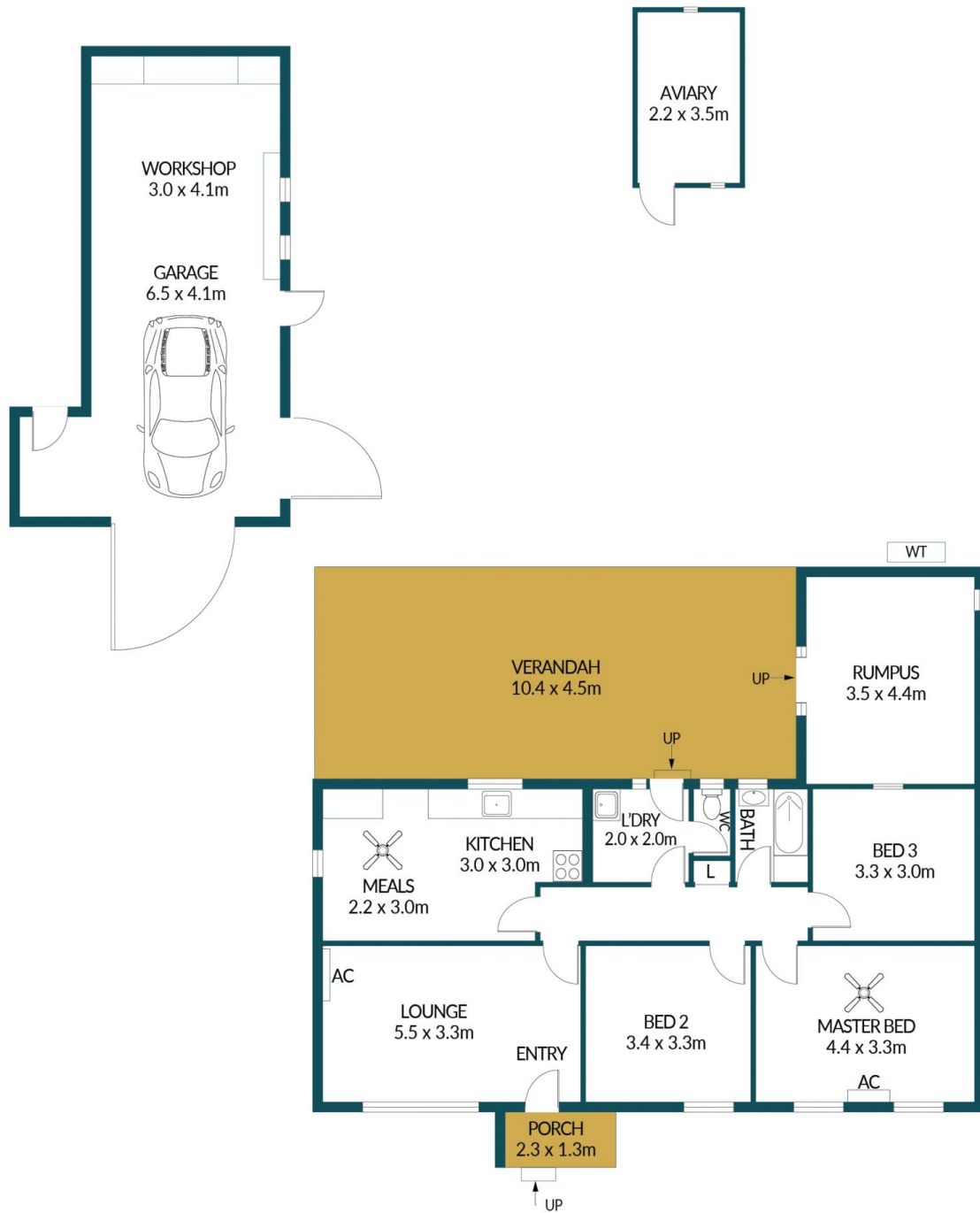
Price : \$ 360,000
Building Size : 104 sqm
Land Size : 910 sqm
View : <https://www.edgerealty.com.au/sale/sa/north-north-east-suburbs/elizabeth-park/residential/house/7225072>



Mike Lao
0410390250



Tyson Bennett
0437161997



22 GOULD ROAD, ELIZABETH PARK

Disclaimer

Plans shown are for marketing purposes only. All dimensions are approximate and not to scale. They are subject to errors and inaccuracies and no liability will be accepted. Interested parties should make their own enquiries. Inclusions and exclusions must be confirmed in the Residential Contract.

APPROXIMATE DIMENSIONS

LIVING:	104.0m ²
GARAGE/WORKSHOP:	41.3m ²
PORCH/VERANDAH:	49.8m ²
AVIARY:	8.7m ²
TOTAL:	203.8m ²