



9 Longview Road TWO WELLS SA

4 2 10

For an in-depth look at this home, please click on the 3D tour for a virtual walk-through or copy and paste this link into your browser

Virtual Tour Link:
<https://my.matterport.com/show/?m=tbUD8Q6XYdz>

To submit an offer, please copy and paste this link into your browser:
<https://www.edgerealty.com.au/buying/make-an-offer/>

Mike Lao, Brendon Ly and Edge Realty RLA256385 are proud to present to the market your very own slice of paradise built by Stirling Homes. This could be your chance to leave behind the hustle and bustle of everyday life and secure a peaceful and private property with room to move and play.

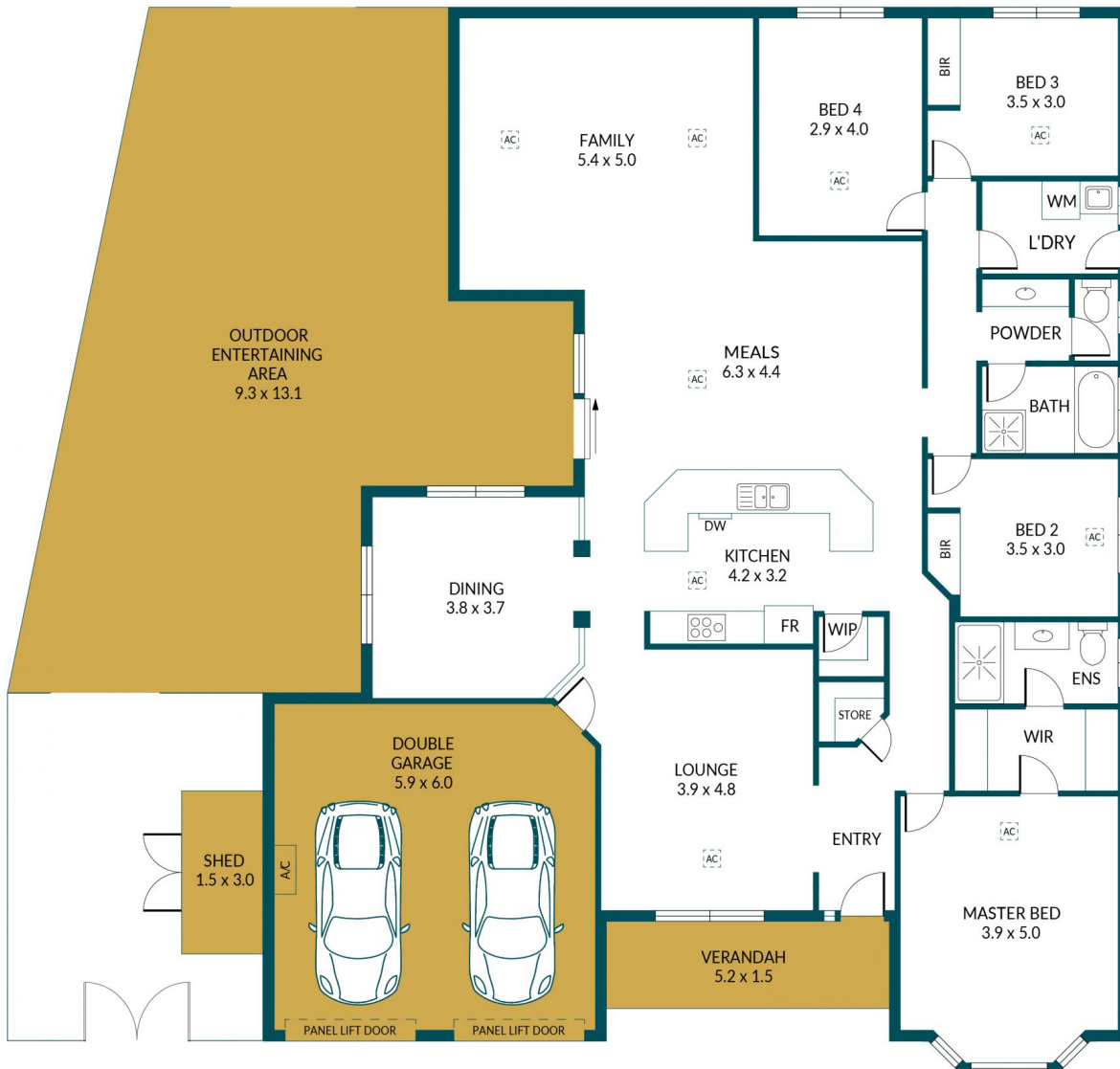
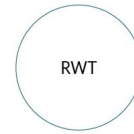
Price : \$ 650,000
Building Size : 344 sqm
Land Size : 1000 sqm
View : <https://www.edgerealty.com.au/sale/sa/mid-north/two-wells/residential/house/7225112>



Mike Lao
0410390250



Brendon Ly
0447888444



9 LONGVIEW ROAD, TWO WELLS

Disclaimer

Plans shown are for marketing purposes only. All dimensions are approximate and not to scale. They are subject to errors and inaccuracies and no liability will be accepted. Interested parties should make their own enquiries. Inclusions and exclusions must be confirmed in the Residential Contract.

APPROXIMATE DIMENSIONS

LIVING:	209.2 m ²
GARAGE:	35.1 m ²
ENTERTAINING:	87.4 m ²
VERANDAH:	8.3 m ²
BSHED:	4.5 m ²
TOTAL:	344.5 m ²