



38 Phineas Street VIRGINIA SA

6 3 2

For an in-depth look at this home, please click on the 3D tour for a virtual walk-through or copy and paste this link into your browser

Virtual Tour Link:
<https://my.matterport.com/show/?m=fhW9rBvy3mi>

To submit an offer, please copy and paste this link into your browser:
<https://www.edgerealty.com.au/buying/make-an-offer/>

Mike Lao, Brendon Ly and Edge Realty RLA256385 are proud to present to the market 38 Phineas Street, an incredible 930 square metre property that offers fantastic and flexible living with 6 bedrooms spread across a main house, attached flat and granny flat.

Step inside the main home to discover an intelligent

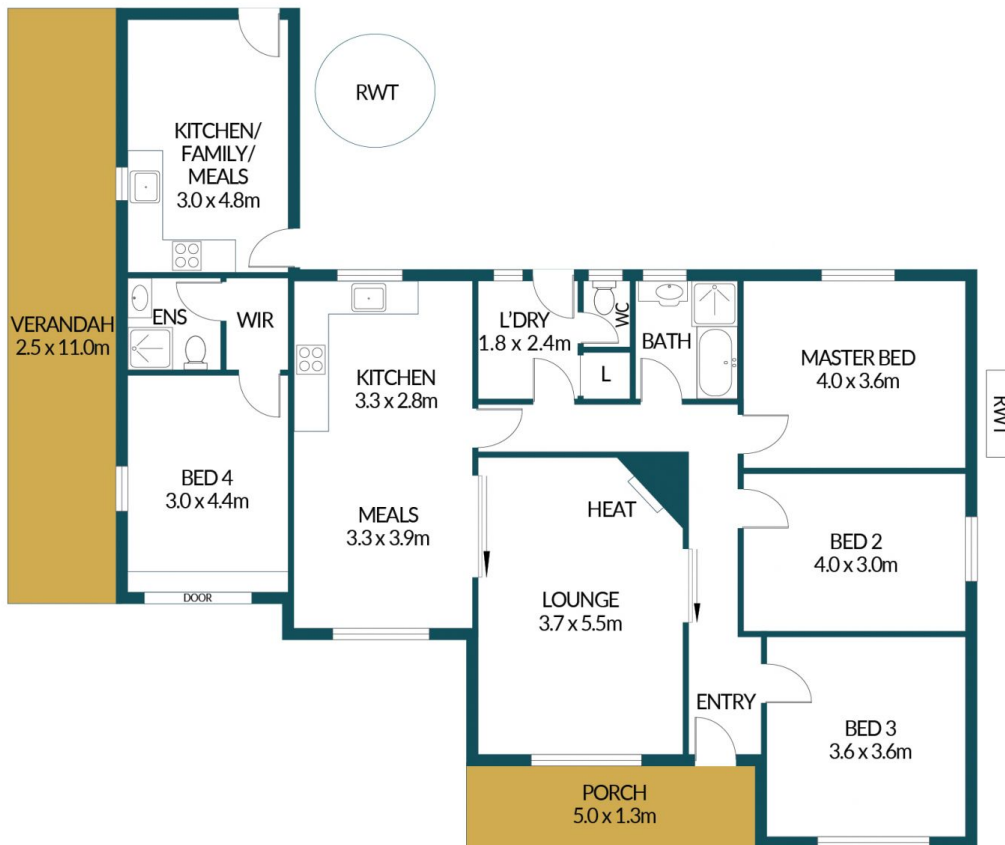
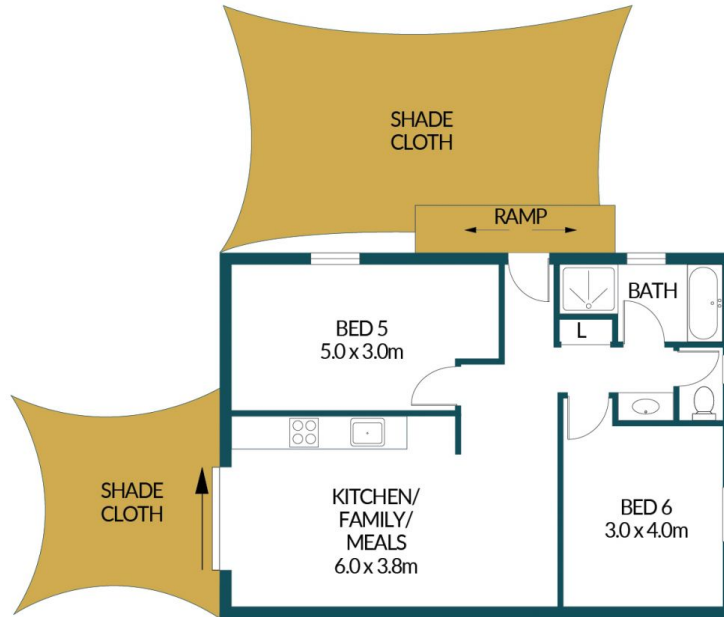
Price : \$ 655,000
Building Size : 192 sqm
Land Size : 930 sqm
View : <https://www.edgerealty.com.au/sale/sa/north-north-east-suburbs/virginia/residential/house/7225168>



Mike Lao
0410390250



Brendon Ly
0447888444



38 PHINEAS STREET, VIRGINIA

Disclaimer

Plans shown are for marketing purposes only. All dimensions are approximate and not to scale. They are subject to errors and inaccuracies and no liability will be accepted. Interested parties should make their own enquiries. Inclusions and exclusions must be confirmed in the Residential Contract.

APPROXIMATE DIMENSIONS

LIVING:	192.4m ²
PORCH:	9.7m ²
VERANDAH:	27.5m ²
TOTAL:	229.6m ²