



## 5 Irwin Lane ANDREWS FARM SA

3 1 2

\*For an in-depth look at this home, please click on the 3D tour for a virtual walk-through\*

Virtual Tour Link:  
<https://my.matterport.com/show/?m=VD5wwRzQ3cd>

To submit an offer, please copy and paste this link into your browser:  
<https://www.edgerealty.com.au/buying/make-an-offer/>

Mike Lao, Tyson Bennett and Edge Realty RLA256385 are proud to present to the market this neat and tidy three-bedroom home. With modern finishes and fixtures throughout, an open-plan living space and a wonderful location, there is so much to love about this move in ready property.

Stepping through the front gate of the home, you'll be

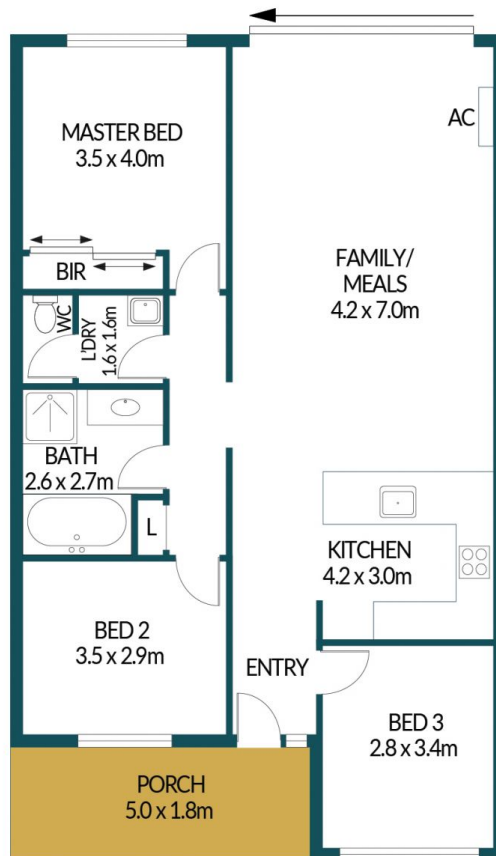
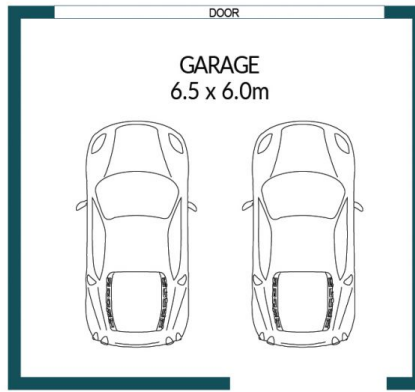
**Price** : \$ 395,800  
**Building Size** : 96 sqm  
**Land Size** : 224 sqm  
**View** : <https://www.edgerealty.com.au/sale/sa/north-north-east-suburbs/andrews-farm/residential/house/7233410>



**Mike Lao**  
0410390250



**Tyson Bennett**  
0437161997



## 5 IRWIN LANE, ANDREWS FARM

### Disclaimer

Plans shown are for marketing purposes only. All dimensions are approximate and not to scale. They are subject to errors and inaccuracies and no liability will be accepted. Interested parties should make their own enquiries. Inclusions and exclusions must be confirmed in the Residential Contract.

### APPROXIMATE DIMENSIONS

LIVING:	96.9m <sup>2</sup>
PORCH:	9.0m <sup>2</sup>
GARAGE:	39.0m <sup>2</sup>
TOTAL:	144.9m <sup>2</sup>