

9 Walana Avenue SALISBURY NORTH SA

3 1 10

For an in-depth look at this home, please click on the 3D tour for a virtual walk-through or copy and paste this link into your browser

Virtual Tour Link:
<https://my.matterport.com/show/?m=mvx1BMtnjqJ>

To submit an offer, please copy and paste this link into your browser:
<https://www.edgerealty.com.au/buying/make-an-offer/>

Mike Lao, Tyson Bennett and Edge Realty RLA256385 are proud to present to the market this idyllic home, where every detail has been expertly crafted to offer the finest in laid-back living. A spacious interior combined with dual driveways, a good-size backyard and generous secure vehicle and boat storage create an abode that will tick the boxes for every member of the family.

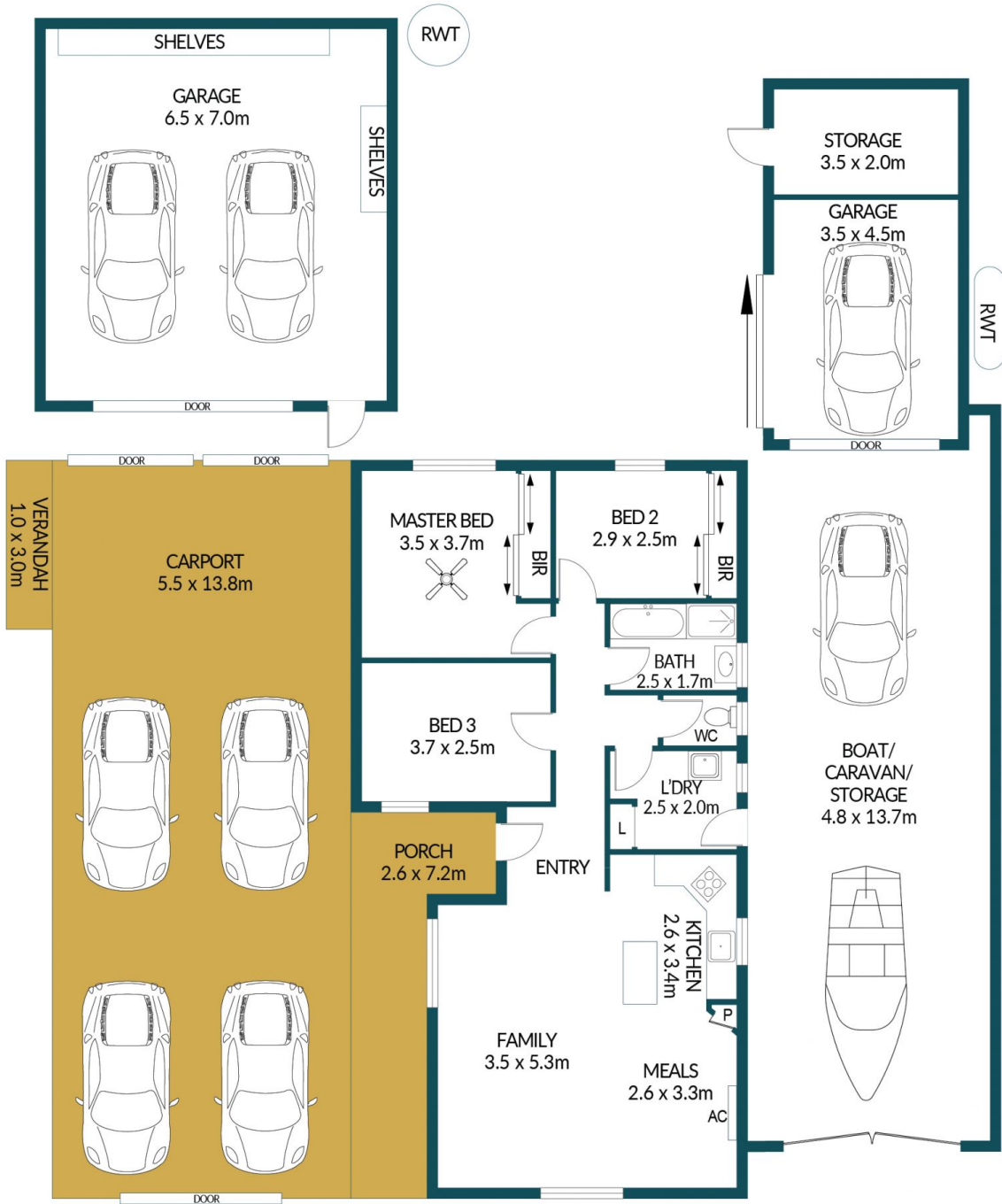
Building Size : 103 sqm
Land Size : 570 sqm
View : <https://www.edgerealty.com.au/sale/sa/north-north-east-suburbs/salisbury-north/residential/house/7254559>



Mike Lao
0410390250



Tyson Bennett
0437161997



9 WALANA AVENUE, SALISBURY NORTH

Disclaimer

Plans shown are for marketing purposes only. All dimensions are approximate and not to scale. They are subject to errors and inaccuracies and no liability will be accepted. Interested parties should make their own enquiries. Inclusions and exclusions must be confirmed in the Residential Contract.

APPROXIMATE DIMENSIONS

LIVING:	90.1m ²
GARAGE/STORAGE:	133.9m ²
PORCH/VERANDAH:	17.1m ²
CARPORT:	75.9m ²
TOTAL:	317.0m ²