



## 36 Forrestall Road ELIZABETH DOWNS SA

3 1 4

\*For an in-depth look at this home, please click on the 3D tour for a virtual walk-through or copy and paste this link into your browser\*

Virtual Tour Link:  
<https://my.matterport.com/show/?m=FCrh41saauY>

To submit an offer, please copy and paste this link into your browser:  
<https://www.edgerealty.com.au/buying/make-an-offer/>

Mike Lao, Brendon Ly and Edge Realty RLA256385 are proud to present to the market this inspiring Elizabeth Downs home ready to treat you to a generously sized living space, incredible comfort and classic charm.

Feel at home from the moment you arrive as its redbrick facade warmly greets you along with ornamental plants that

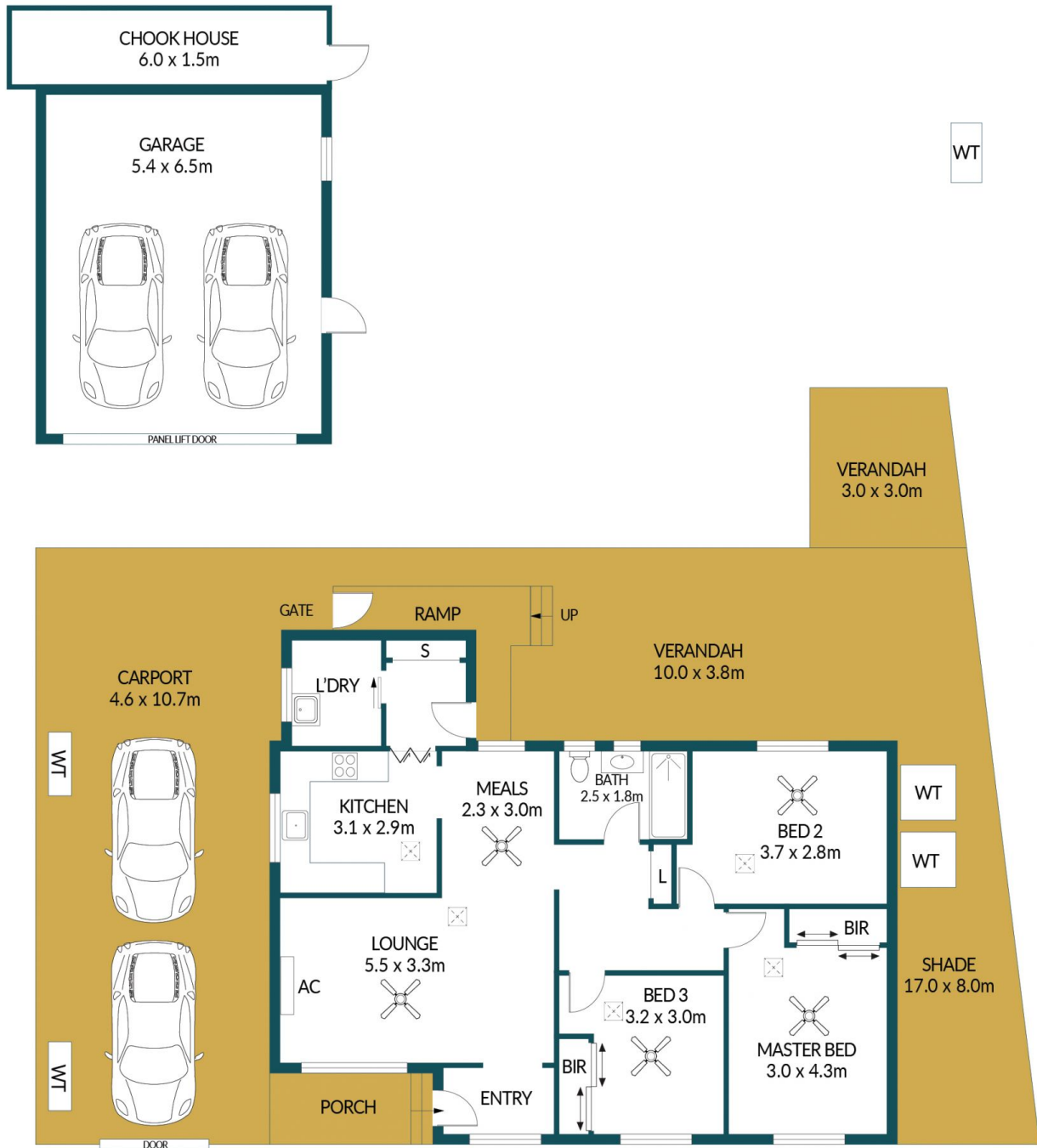
**Price** : \$ 415,000  
**Building Size** : 101 sqm  
**Land Size** : 710 sqm  
**View** : <https://www.edgerealty.com.au/sale/sa/north-north-east-suburbs/elizabeth-downs/residential/house/7267289>



**Mike Lao**  
0410390250



**Brendon Ly**  
0447888444



## 36 FORRESTALL ROAD, ELIZABETH DOWNS

### Disclaimer

Plans shown are for marketing purposes only. All dimensions are approximate and not to scale. They are subject to errors and inaccuracies and no liability will be accepted. Interested parties should make their own enquiries. Inclusions and exclusions must be confirmed in the Residential Contract.

### APPROXIMATE DIMENSIONS

LIVING:	101.1m <sup>2</sup>
SHADE:	136.0m <sup>2</sup>
CARPORT:	49.2m <sup>2</sup>
GARAGE:	35.1m <sup>2</sup>
PORCH:	4.4m <sup>2</sup>
CHOOK HOUSE:	9.0m <sup>2</sup>
VERANDAH:	38.0m <sup>2</sup>
TOTAL:	372.8m <sup>2</sup>