



4 Lomandra Crescent HILLBANK SA

4  2  2 

For an in-depth look at this home, please click on the 3D tour for a virtual walk-through or copy and paste this link into your browser

Virtual Tour Link:
<https://vtc.virtualtourscreator.com.au/share/23a999ed7a54d199850fb2fd262a6f6c>

Price : \$ 509,000
Building Size : 193 sqm
Land Size : 450 sqm
View : <https://www.edgerealty.com.au/sale/sa/north-north-east-suburbs/hillbank/residential/house/7267342>

To submit an offer, please copy and paste this link into your browser:

<https://www.edgerealty.com.au/buying/make-an-offer/>

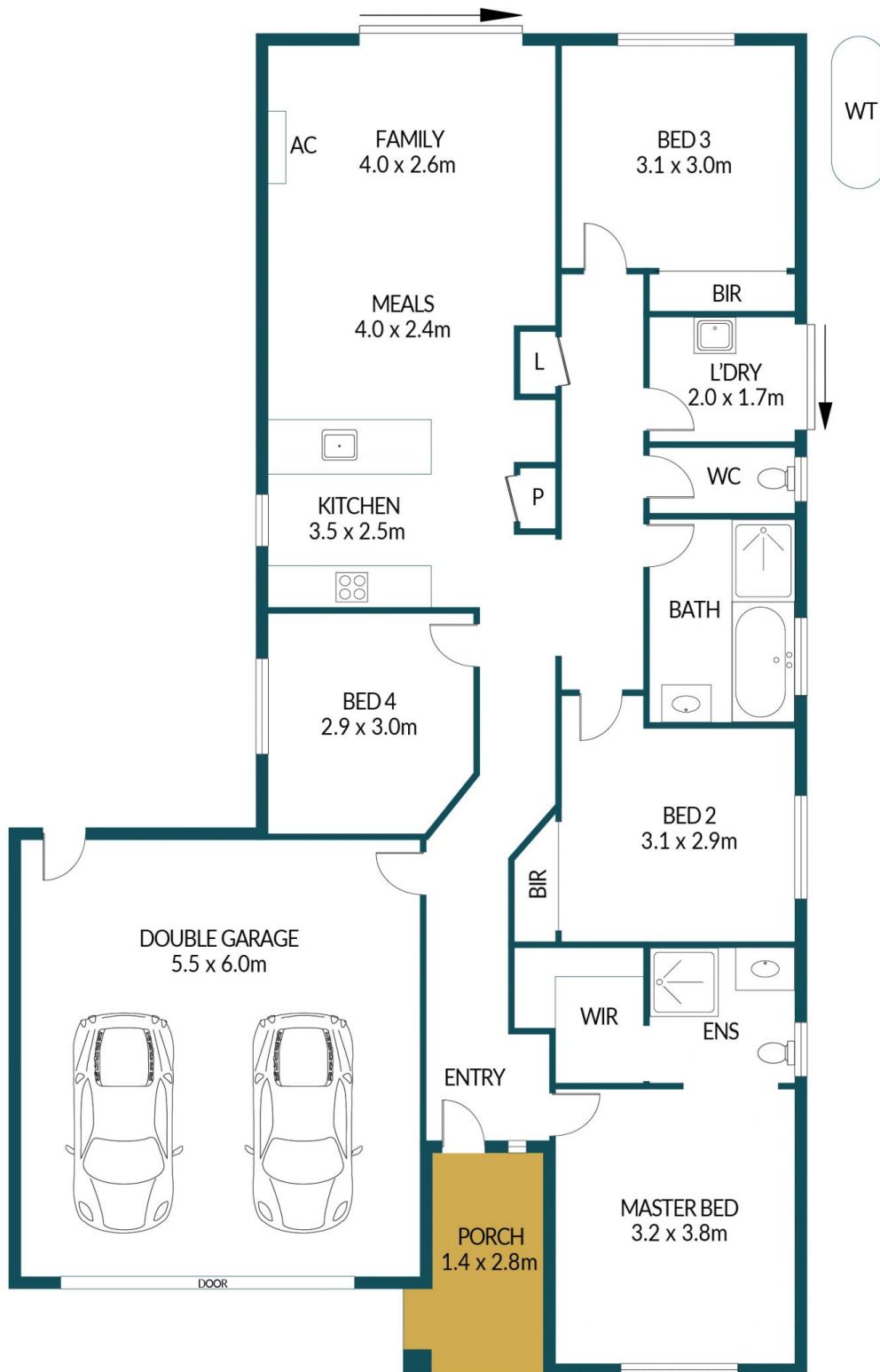
Mike Lao, Tyson Bennett and Edge Realty RLA256385 are proud to present to the market 4 Lomandra Crescent, neatly positioned in a development of pristine contemporary homes and perfectly-suited to those seeking the idyllic suburban lifestyle.



Mike Lao
0410390250



Tyson Bennett
0437161997



4 LOMANDRA CRESCENT, HILLBANK

Disclaimer

Plans shown are for marketing purposes only. All dimensions are approximate and not to scale. They are subject to errors and inaccuracies and no liability will be accepted. Interested parties should make their own enquiries. Inclusions and exclusions must be confirmed in the Residential Contract.

APPROXIMATE DIMENSIONS

| | |
|---------|---------------------|
| LIVING: | 193.2m ² |
| GARAGE: | 33.0m ² |
| PORCH: | 3.9m ² |
| TOTAL: | 230.1m ² |