



### 23 Leon Crescent SALISBURY NORTH SA

3  1  2 

\*For an in-depth look at this home, please click on the 3D tour for a virtual walk-through\*

Virtual Tour Link:  
<https://my.matterport.com/show/?m=9WMjza9Qci3>

To submit an offer, please copy and paste this link into your browser: <https://airtable.com/shrBb12PXtTjyZAXm>

Mike Lao, Tyson Bennett and Edge Realty RLA256385 are proud to present to the market this beautifully renovated home ready for a family to simply move in and start making memories. From the beautiful curb appeal in a quiet crescent to the quality finishes and fixtures throughout, this is a home you will be proud to call your own.

Inside, a stylish haven awaits with on-trend finishes throughout. From the pine floorboards to the soft

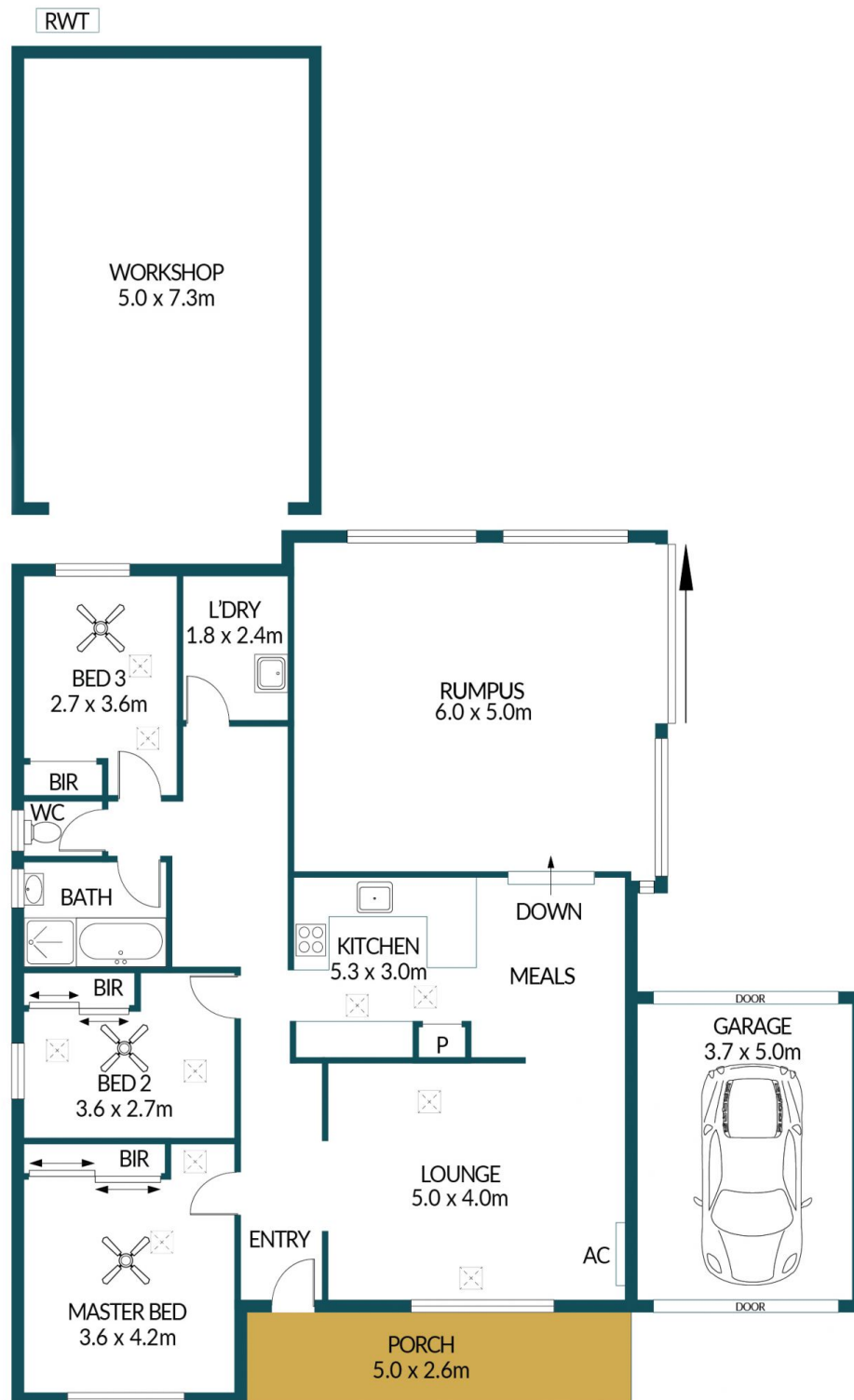
**Price** : \$ 440,000  
**Building Size** : 139 sqm  
**Land Size** : 610 sqm  
**View** : <https://www.edgerealty.com.au/sale/sa/north-north-east-suburbs/salisbury-north/residential/house/7275209>



**Mike Lao**  
0410390250



**Tyson Bennett**  
0437161997



## 23 LEON CRESCENT, SALISBURY NORTH

### Disclaimer

Plans shown are for marketing purposes only. All dimensions are approximate and not to scale. They are subject to errors and inaccuracies and no liability will be accepted. Interested parties should make their own enquiries. Inclusions and exclusions must be confirmed in the Residential Contract.

### APPROXIMATE DIMENSIONS

LIVING:	139.8m <sup>2</sup>
GARAGE:	18.5m <sup>2</sup>
PORCH:	13.0m <sup>2</sup>
WORKSHOP:	36.5m <sup>2</sup>
TOTAL:	207.8m <sup>2</sup>