



1/25 Carey Street SALISBURY SA

2 1 1

For an in-depth look at this home, please click on the 3D tour for a virtual walk-through or copy and paste this link into your browser

Virtual Tour Link:
<https://vtc.virtualtourscreator.com.au/share/5eece0866cf918d2612f9097177207d3>

To submit an offer, please copy and paste this link into your browser:

<https://www.edgerealty.com.au/buying/make-an-offer/>

Mike Lao, Brendon Ly and Edge Realty RLA256385 are proud to present to the market a well-appointed unit located on Carey Street. Whether you are looking for a home to live in or a great investment opportunity to expand your real estate portfolio, this unit is what you've been looking for!

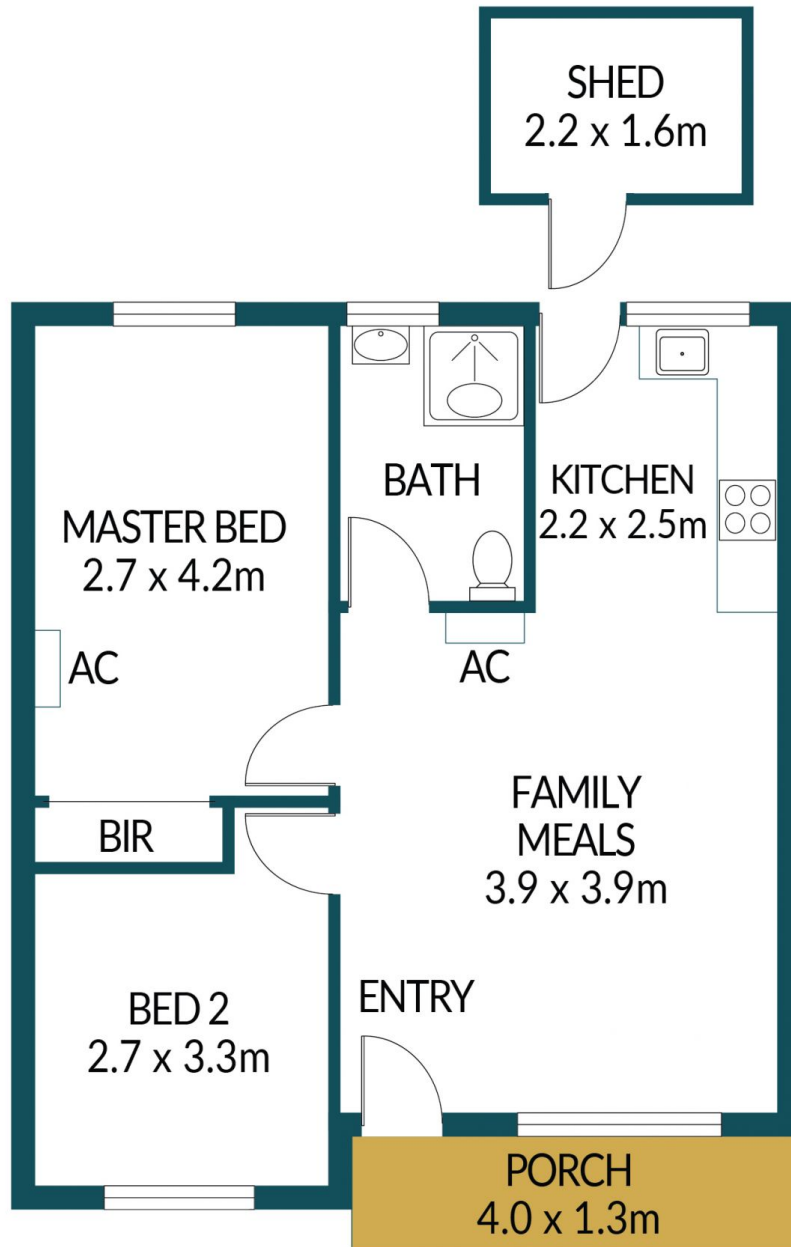
Price : \$ 230,000
Building Size : 53 sqm
Land Size : 137 sqm
View : <https://www.edgerealty.com.au/sale/sa/north-north-east-suburbs/salisbury/residential/house/7275675>



Mike Lao
0410390250



Brendon Ly
0447888444



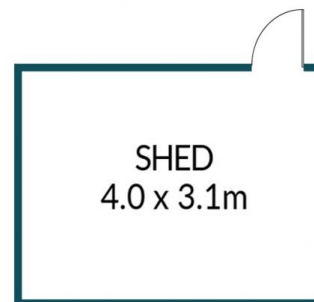
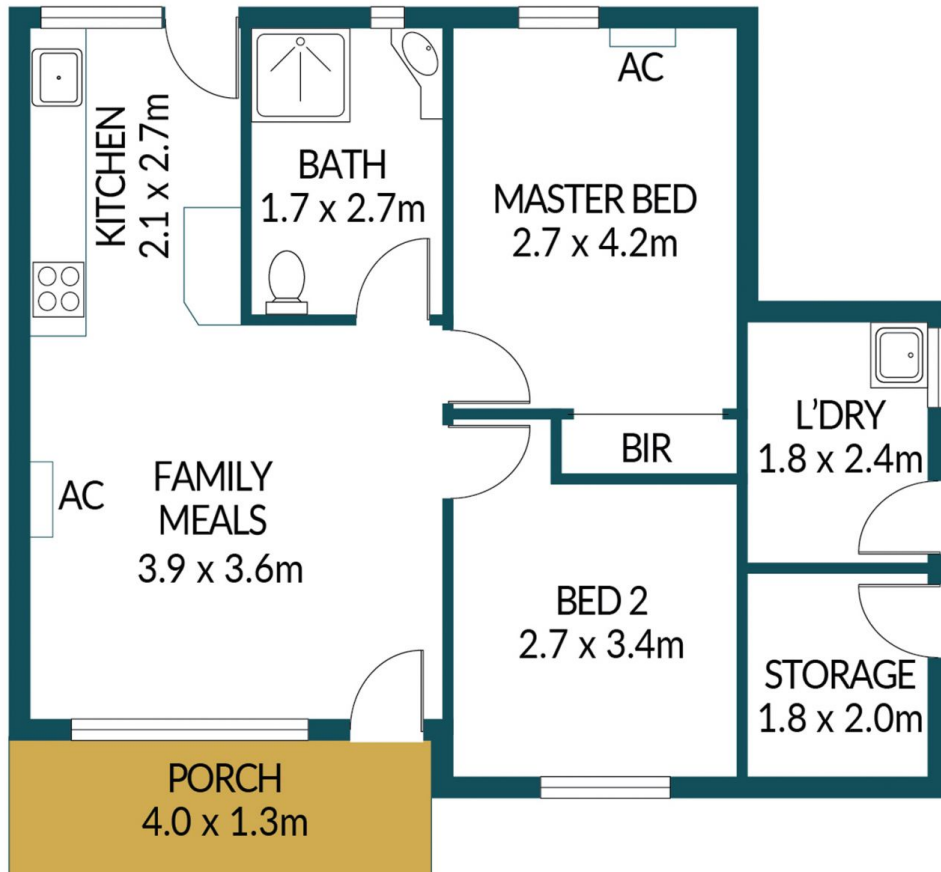
1/25 CAREY STREET, SALISBURY

Disclaimer

Plans shown are for marketing purposes only. All dimensions are approximate and not to scale. They are subject to errors and inaccuracies and no liability will be accepted. Interested parties should make their own enquiries. Inclusions and exclusions must be confirmed in the Residential Contract.

APPROXIMATE DIMENSIONS

LIVING:	50.4m ²
SHED:	3.5m ²
PORCH:	5.2m ²
TOTAL:	59.1m ²



8/25 CAREY STREET, SALISBURY

Disclaimer

Plans shown are for marketing purposes only. All dimensions are approximate and not to scale. They are subject to errors and inaccuracies and no liability will be accepted. Interested parties should make their own enquiries. Inclusions and exclusions must be confirmed in the Residential Contract.

APPROXIMATE DIMENSIONS

LIVING:	59.6m ²
SHED:	12.4m ²
PORCH:	5.2m ²
TOTAL:	77.2m ²