



## 23 Perre Drive CRAIGMORE SA

4  2  3 

\*For an in-depth look at this home, please click on the 3D tour for a virtual walk-through or copy and paste this link into your browser\*

Virtual Tour Link:  
<https://my.matterport.com/show/?m=bsjxgB8fy7F>

To submit an offer, please copy and paste this link into your browser:  
<https://www.edgerealty.com.au/buying/make-an-offer/>

Mike Lao, Tyson Bennett and Edge Realty RLA256385 are proud to present to the market this charming Craigmore home offering an expansive and flexible layout that will tick all the boxes. Lush established gardens and a gorgeous covered porch welcome you to the property and invite you to step inside and explore the generous single-storey layout.

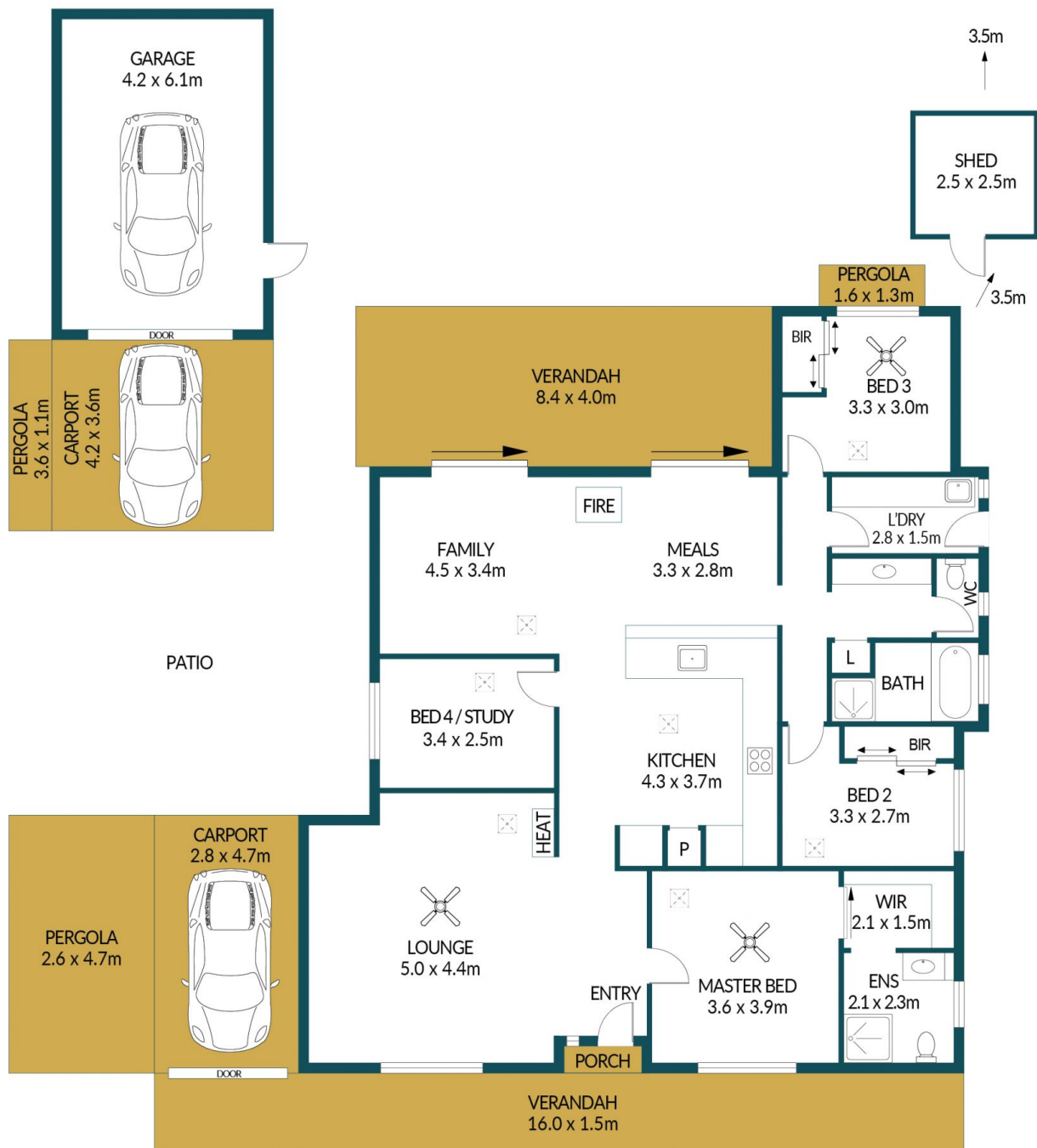
**Price** : \$ 540,000  
**Building Size** : 163 sqm  
**Land Size** : 610 sqm  
**View** : <https://www.edgerealty.com.au/sale/sa/north-north-east-suburbs/craigmore/residential/house/7276464>



**Mike Lao**  
0410390250



**Tyson Bennett**  
0437161997



## 23 PERRE DRIVE, CRAIGMORE

### Disclaimer

Plans shown are for marketing purposes only. All dimensions are approximate and not to scale. They are subject to errors and inaccuracies and no liability will be accepted. Interested parties should make their own enquiries. Inclusions and exclusions must be confirmed in the Residential Contract.

### APPROXIMATE DIMENSIONS

LIVING:	163.0m <sup>2</sup>
GARAGE/PATIO:	67.5m <sup>2</sup>
PERGOLA/SHED:	27.1m <sup>2</sup>
VERANDAH/PORCH:	58.5m <sup>2</sup>
TOTAL:	316.1m <sup>2</sup>