



22/6 Loades Street SALISBURY SA

2 1 1

For an in-depth look at this home, please click on the 3D tour for a virtual walk-through or copy and paste this link into your browser

Virtual Tour Link:
<https://vtc.virtualltourscreator.com.au/share/1d86d3e8008eedcb9cc221c5c3650dd4>

To submit an offer, please copy and paste this link into your browser:

<https://www.edgerealty.com.au/buying/make-an-offer/>

Mike Lao, Brendon Ly and Edge Realty RLA256385 in conjunction with McGrath Real Estate, are proud to present to the market a sensational opportunity to purchase this low maintenance unit ideally located in the heart of Salisbury. This two bedroom unit perfect for singles, couples, those seeking an easy care lifestyle or an astute investor looking

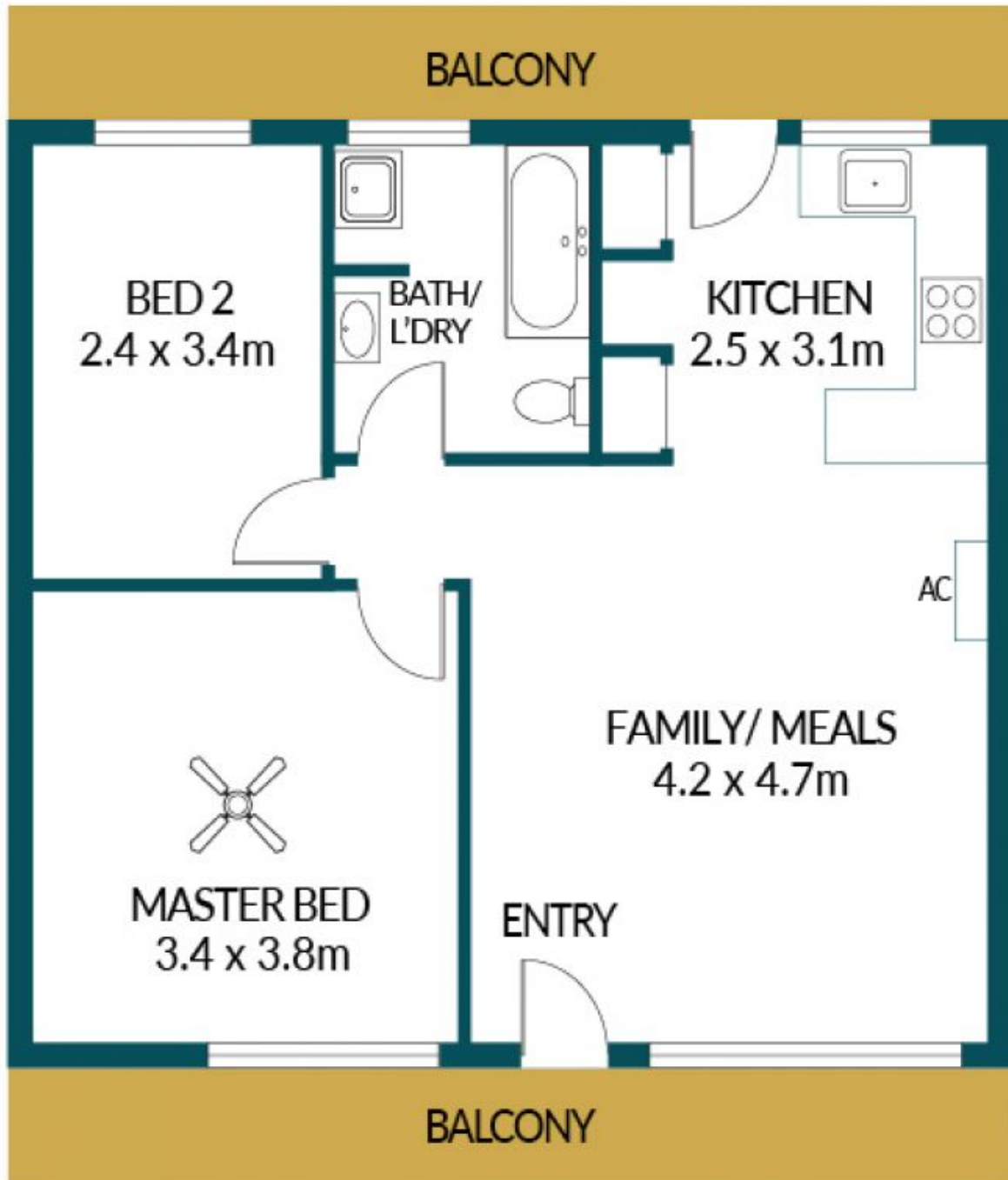
Price : \$ 165,000
Building Size : 62 sqm
Land Size : 64 sqm
View : <https://www.edgerealty.com.au/sale/sa/north-north-east-suburbs/salisbury/residential/unit/7288236>



Mike Lao
0410390250



Brendon Ly
0447888444



22/6 LOADES STREET, SALISBURY

Disclaimer

Plans shown are for marketing purposes only. All dimensions are approximate and not to scale. They are subject to errors and inaccuracies and no liability will be accepted. Interested parties should make their own enquiries. Inclusions and exclusions must be confirmed in the Residential Contract.

APPROXIMATE DIMENSIONS

LIVING: 62.3m²

TOTAL: 62.3m²