



## 12/1 Wentworth Court GOLDEN GROVE SA

3 1 2

\*For an in-depth look at this home, please click on the 3D tour for a virtual walk-through or copy and paste this link into your browser\*

Virtual Tour Link:  
<https://my.matterport.com/show/?m=kN5PrpNbqNh>

To submit an offer, please copy and paste this link into your browser:  
<https://www.edgerealty.com.au/buying/make-an-offer/>

Mike Lao, Tyson Bennett and Edge Realty RLA256385 are proud to present to the market 12/1 Wentworth Court, securely positioned in a community of townhouses, in an incredibly convenient location with unbeatable access to local amenities.

Well-manicured greenery and a pristine textured exterior

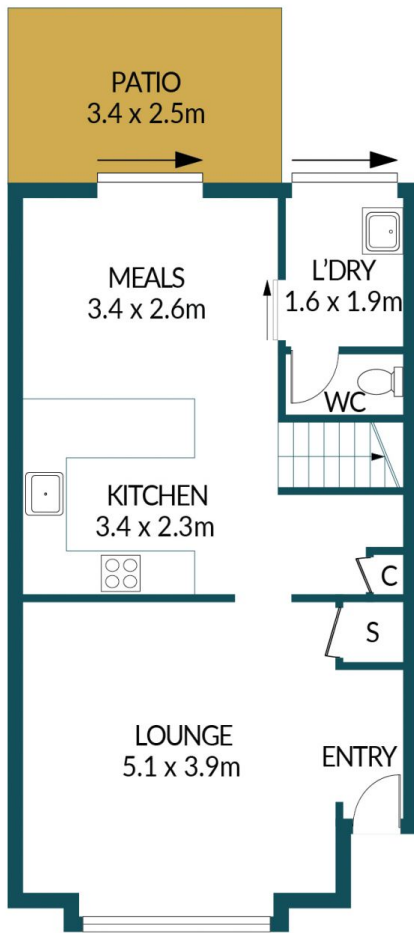
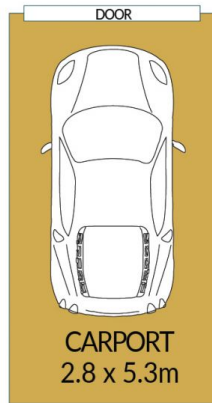
**Price** : \$ 415,000  
**Building Size** : 105 sqm  
**Land Size** : 145 sqm  
**View** : <https://www.edgerealty.com.au/sale/sa/north-north-east-suburbs/golden-grove/residential/townhouse/7295945>



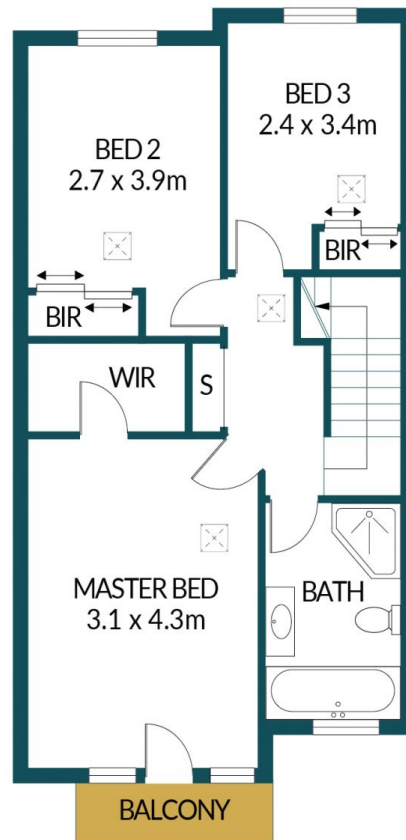
**Mike Lao**  
0410390250



**Tyson Bennett**  
0437161997



GROUND FLOOR



FIRST FLOOR

## 12/1 WENTWORTH COURT, GOLDEN GROVE

### Disclaimer

Plans shown are for marketing purposes only. All dimensions are approximate and not to scale. They are subject to errors and inaccuracies and no liability will be accepted. Interested parties should make their own enquiries. Inclusions and exclusions must be confirmed in the Residential Contract.

### APPROXIMATE DIMENSIONS

LIVING:	105.2m <sup>2</sup>
CARPORT:	14.8m <sup>2</sup>
PATIO:	8.5m <sup>2</sup>
BALCONY:	2.2m <sup>2</sup>
TOTAL:	130.7m <sup>2</sup>