

## 19 Crittenden Road SMITHFIELD PLAINS SA

3 1 4

\*For an in-depth look at this home, please click on the 3D tour for a virtual walk-through or copy and paste this link into your browser\*

Virtual [Tour](https://my.matterport.com/show/?m=Co4Mu5ZJQFK) Link:

To submit an offer, please copy and paste this link into your browser:  
<https://www.edgerealty.com.au/buying/make-an-offer/>

Mike Lao, Brendon Ly and Edge Realty RLA256385 are proud to present to the market this easy-care single-level brick home in Smithfield Plains that is bursting with potential. The new owners could simply move in, unpack and relax, update with their own personal touches, or renovate into the modern family home of their dreams (STCA).

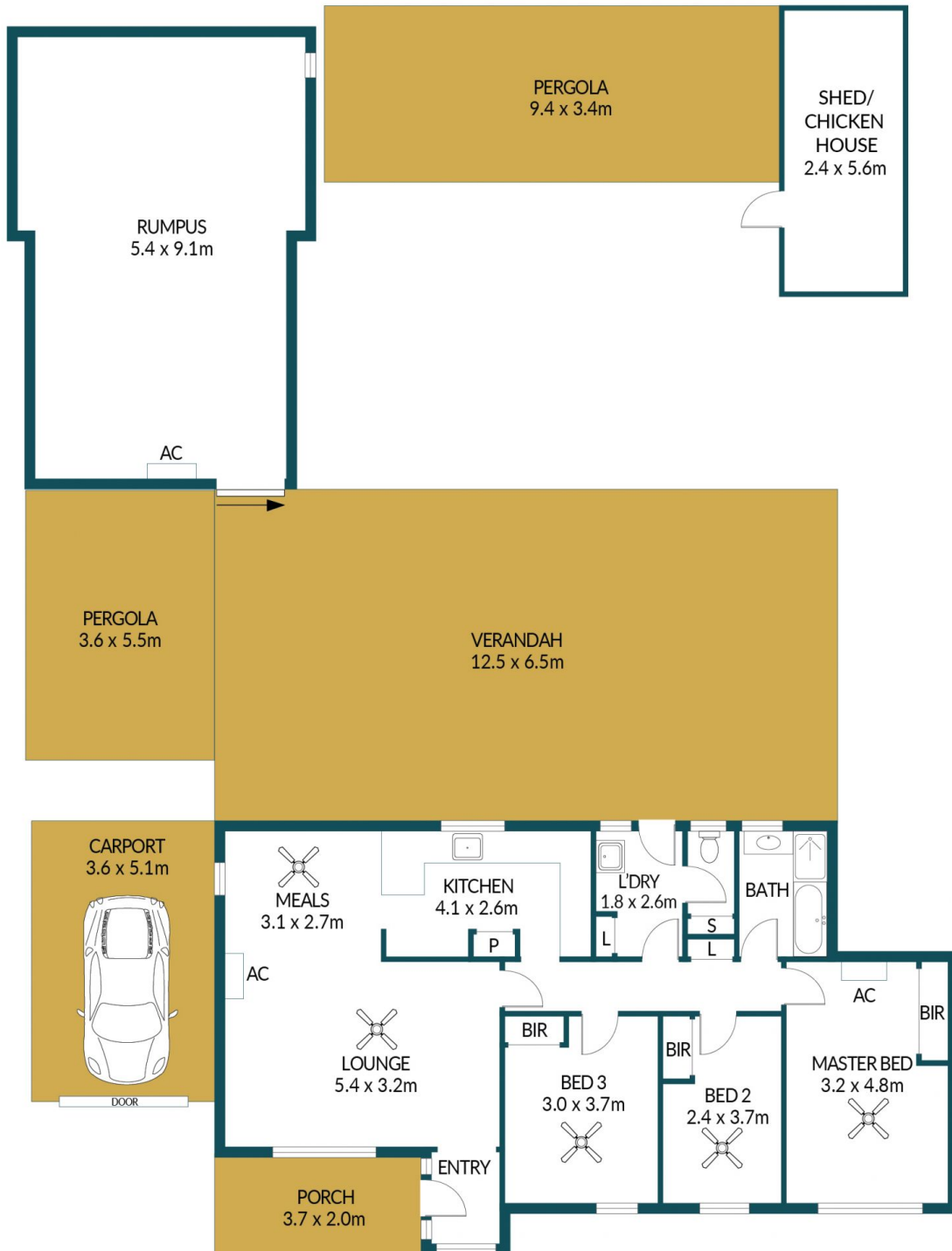
**Price** : \$ 370,000  
**Building Size** : 98 sqm  
**Land Size** : 720 sqm  
**View** : <https://www.edgerealty.com.au/sale/sa/north-north-east-suburbs/smithfield-plains/residential/house/7305187>



**Mike Lao**  
0410390250



**Brendon Ly**  
0447888444



## 19 CRITTENDEN ROAD, SMITHFIELD PLAINS

### Disclaimer

Plans shown are for marketing purposes only. All dimensions are approximate and not to scale. They are subject to errors and inaccuracies and no liability will be accepted. Interested parties should make their own enquiries. Inclusions and exclusions must be confirmed in the Residential Contract.

### APPROXIMATE DIMENSIONS

LIVING:	98.6m <sup>2</sup>
VER/PERG/SHED:	146.5m <sup>2</sup>
PORCH/CARPORT:	25.8m <sup>2</sup>
RUMPUS:	48.5m <sup>2</sup>
TOTAL:	319.4m <sup>2</sup>