



Lot 100 Wild Horse Street WILD HORSE PLAINS SA

4 1 8

For an in-depth look at this home, please click on the 3D tour for a virtual walk-through or copy and paste this link into your browser

Virtual <https://my.matterport.com/show/?m=7JsNTzPExYP> Tour Link:

To submit an offer, please copy and paste this link into your browser:
<https://www.edgerealty.com.au/buying/make-an-offer/>

Mike Lao, Tyson Bennett and Edge Realty RLA256385 are proud to present to the market a stunning 4,580sqm estate that is brimming with potential and natural light. This property features a beautiful easy-care home that is sure to delight a large family with its free-flowing vertical floor plan offering four bedrooms and multiple living areas. Timber floors flow elegantly throughout, excellently adding a warm

Price : \$ 350,000

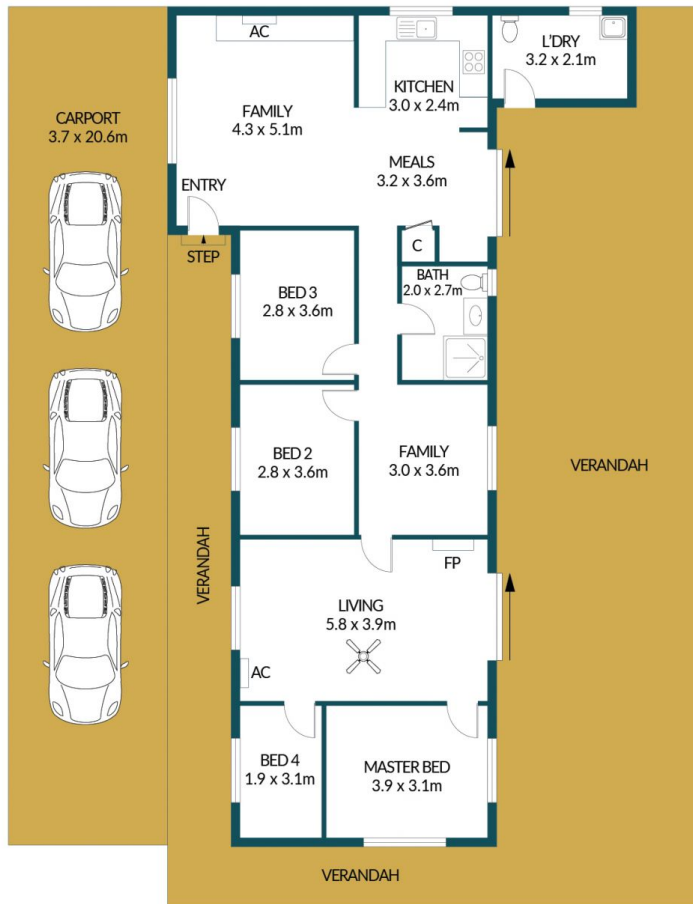
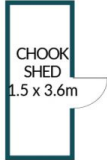
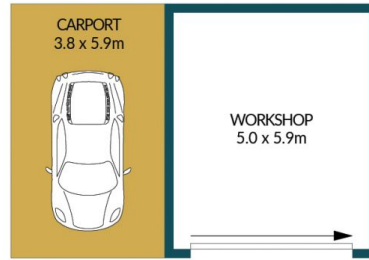
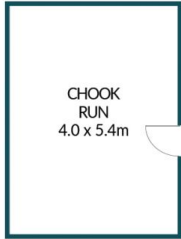
View : <https://www.edgerealty.com.au/sale/sa/mid-north/wild-horse-plains/residential/house/7341539>



Mike Lao
0410390250



Tyson Bennett
0437161997



BALIHUT

100 WILD HORSE STREET, WILD HORSE PLAINS

Disclaimer

Plans shown are for marketing purposes only. All dimensions are approximate and not to scale. They are subject to errors and inaccuracies and no liability will be accepted. Interested parties should make their own enquiries. Inclusions and exclusions must be confirmed in the Residential Contract.

APPROXIMATE DIMENSIONS

LIVING:	129.1m ²
VERANDAH/DOG KENNEL:	136.2m ²
CARPORT/CHOOK RUN:	119.6m ²
WORKSHOP/SHED/BALIHUT:	88.5m ²
TOTAL:	346.4m ²