



13 Perrott Street ELIZABETH PARK SA

4 1 2

For an in-depth look at this home, please click on the 3D tour for a virtual walk-through or copy and paste this link into your browser

Virtual Tour Link:
<https://vtc.virtualtourscreator.com.au/share/030088f9a7e0f69c2e3f4b028ce84010>

Price : \$ 371,000
Land Size : 690 sqm
View : <https://www.edgerealty.com.au/sale/sa/north-north-east-suburbs/elizabeth-park/residential/house/7341568>

To submit an offer, please copy and paste this link into your browser:

<https://www.edgerealty.com.au/buying/make-an-offer/>

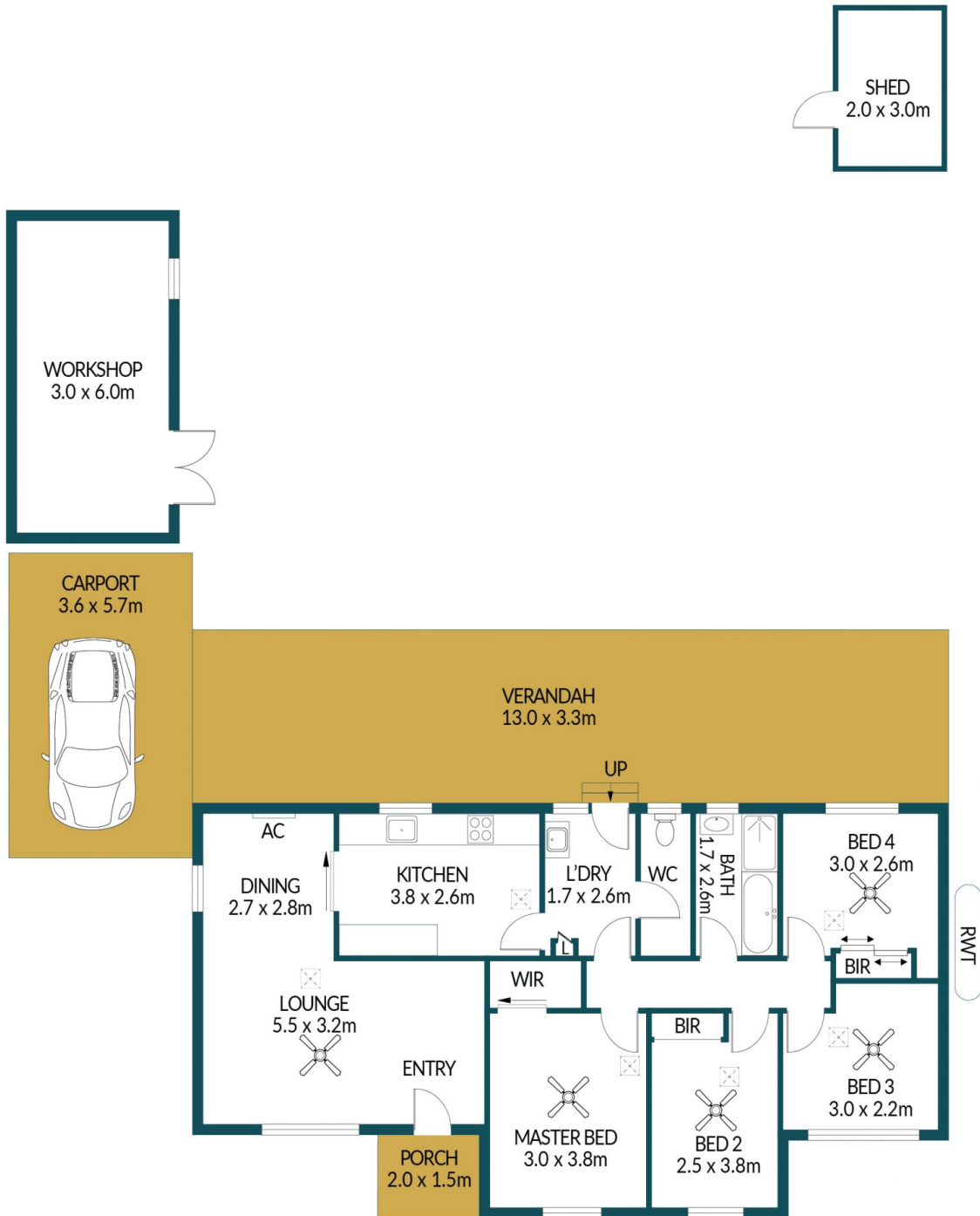
Mike Lao, Brendon Ly and Edge Realty RLA256385 are proud to present to the market this 4-bedroom home, neatly positioned on tree-lined Perrott Street with 690sqm of well-maintained land, perfectly suited to those seeking the idyllic suburban lifestyle.



Mike Lao
0410390250



Brendon Ly
0447888444



13 PERROTT STREET, ELIZABETH PARK

Disclaimer

Plans shown are for marketing purposes only. All dimensions are approximate and not to scale. They are subject to errors and inaccuracies and no liability will be accepted. Interested parties should make their own enquiries. Inclusions and exclusions must be confirmed in the Residential Contract.

APPROXIMATE DIMENSIONS

LIVING:	98.9m ²
WORKSHOP/SHED:	24.0m ²
PORCH/VERANDAH:	45.9m ²
CARPORT:	20.5m ²
TOTAL:	189.3m ²