



88 Anderson Walk SMITHFIELD PLAINS SA

3 1 2

To submit an offer, please copy and paste this link into your browser:

<https://www.edgerealty.com.au/buying/make-an-offer/>

Mike Lao, Tyson Bennett and Edge Realty RLA256385 are proud to present to the market this well kept three bedroom home perfectly positioned on a generous 730sqm corner allotment with absolutely no easements.

The property is currently tenanted with a fixed lease of \$300 per week until 13/07/2023.

Step inside to discover an intelligent floorplan that maximises the available space, with doors that allow the residents to open up and close off spaces to best suit their lifestyle and activities. Boasting solid pine flooring throughout for easy care cleaning and split system air

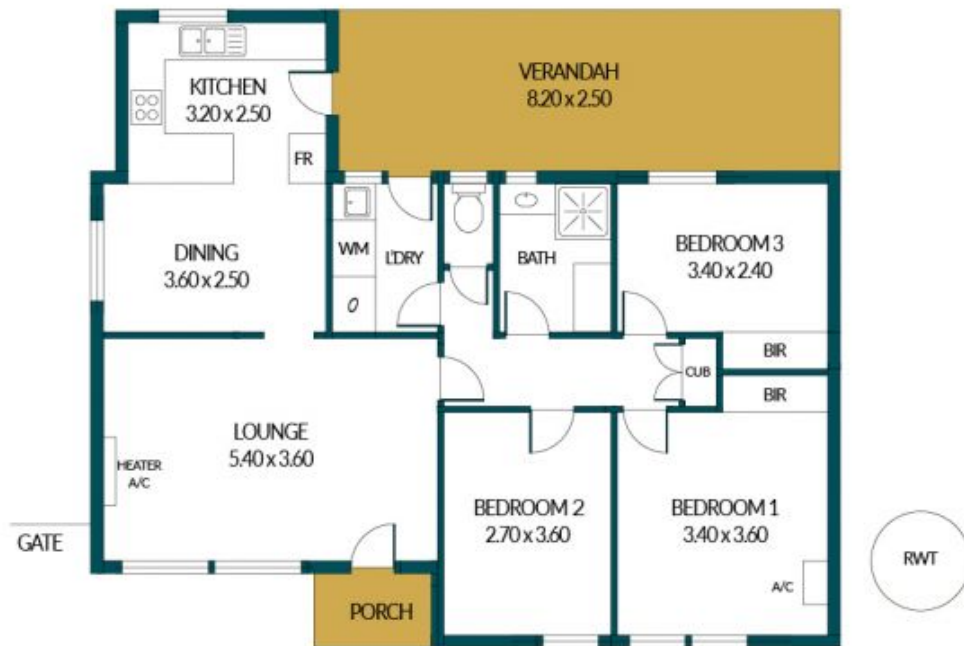
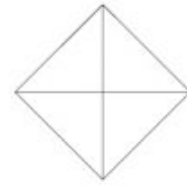
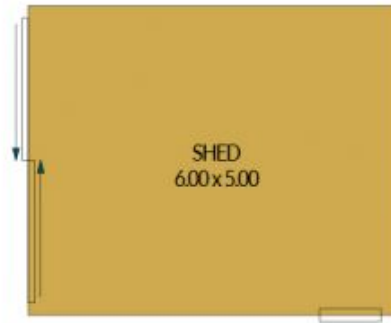
Price : \$ 370,151
Building Size : 99 sqm
Land Size : 729 sqm
View : <https://www.edgerealty.com.au/sale/sa/north-north-east-suburbs/smithfield-plains/residential/house/7346118>



Mike Lao
0410390250



Tyson Bennett
0437161997



88 ANDERSON WALK, SMITHFIELD PLAINS

Disclaimer

Plans shown are for marketing purposes only. All dimensions are approximate and not to scale. They are subject to errors and inaccuracies and no liability will be accepted. Interested parties should make their own enquiries. Inclusions and exclusions must be confirmed in the Residential Contract.

APPROXIMATE DIMENSIONS

LIVING:	95.93m ²
CARPORT:	20.5m ²
PORCH:	2.28m ²
SHED:	30.00m ²
TOTAL:	148.71m ²