



5/134 Fenden Road SALISBURY PARK SA

4 2 4

For an in-depth look at this home, please click on the 3D tour for a virtual walk-through or copy and paste this link into your browser

Virtual <https://my.matterport.com/show/?m=aNbKQiugFXG> Tour Link:

To submit an offer, please copy and paste this link into your browser:
<https://www.edgerealty.com.au/buying/make-an-offer/>

Mike Lao, Tyson Bennett and Edge Realty RLA256385 are proud to present to the market this easy-care modern delight set on a 607sqm block that offers a life of ease and comfort to those who call it home. All the room you need to move, play and entertain is on offer in the spacious and well-designed single-storey layout with a seamless flow to the outdoor alfresco with access to the stunning Jenkins

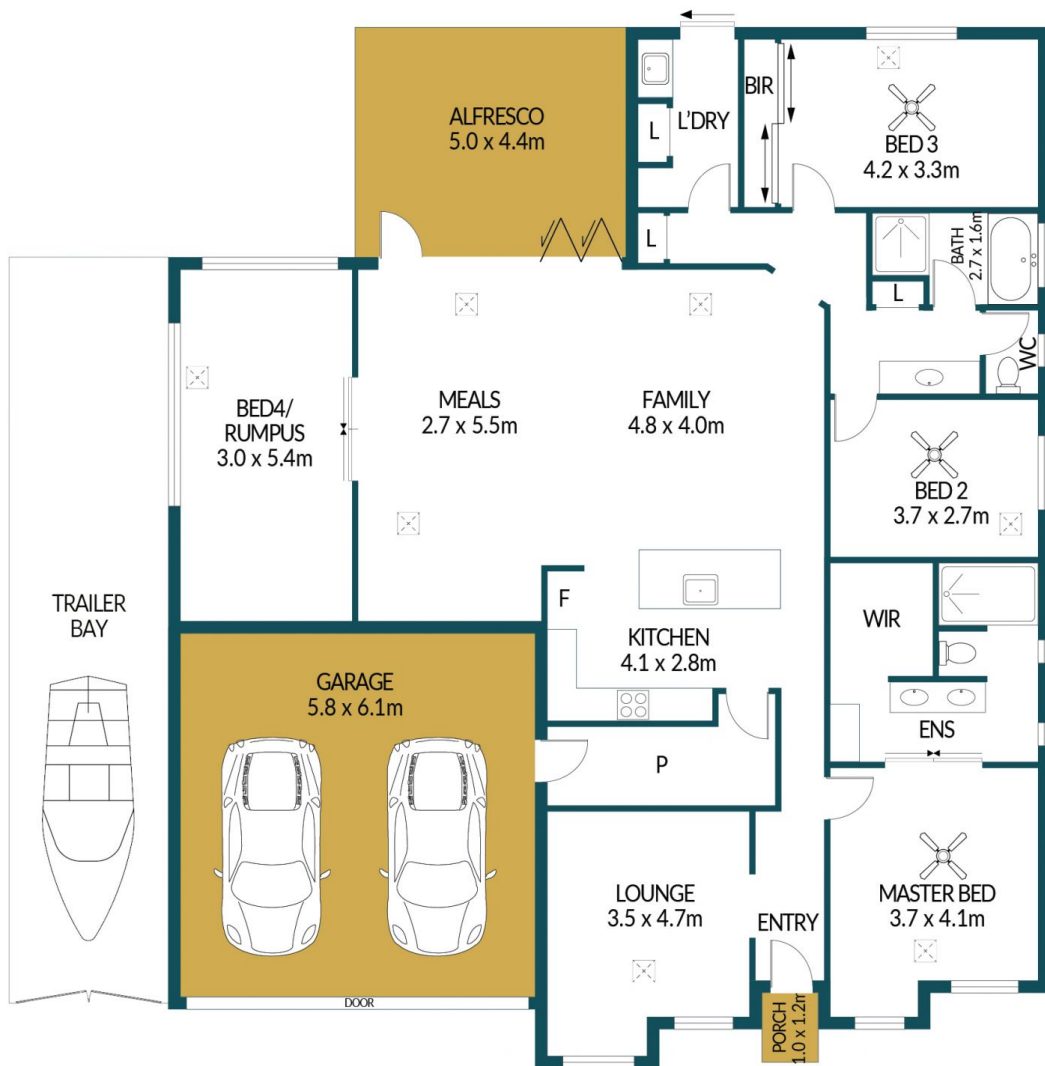
Price : \$ 675,000
Building Size : 174 sqm
Land Size : 607 sqm
View : <https://www.edgerealty.com.au/sale/sa/north-north-east-suburbs/salisbury-park/residential/house/7347163>



Mike Lao
0410390250



Tyson Bennett
0437161997



5/134 FENDEN ROAD, SALISBURY PARK

Disclaimer

Plans shown are for marketing purposes only. All dimensions are approximate and not to scale. They are subject to errors and inaccuracies and no liability will be accepted. Interested parties should make their own enquiries. Inclusions and exclusions must be confirmed in the Residential Contract.

APPROXIMATE DIMENSIONS

LIVING:	174.5m ²
GARAGE:	35.9m ²
PERGOLA:	22.0m ²
PORCH/SHED:	16.2m ²
TOTAL:	248.6m ²