



15 Taworri Road FAIRVIEW PARK SA

4 3 7

For an in-depth look at this home, please click on the 3D tour for a virtual walk-through or copy and paste this link into your browser

Virtual Tour Link:
<https://my.matterport.com/show/?m=fQMFpyPVZGY>

To submit an offer, please copy and paste this link into your browser:
<https://www.edgerealty.com.au/buying/make-an-offer/>

Mike Lao, Tyson Bennett and Edge Realty RLA256385 are proud to present to the market this wonderful four-bedroom, three-bathroom family home that backs onto Taworri reserve and offers an enviable lifestyle in Fairview Park. Entertainers will adore this palatial property with a room for every mood and occasion as well as a sparkling pool and a central location perfect for family life.

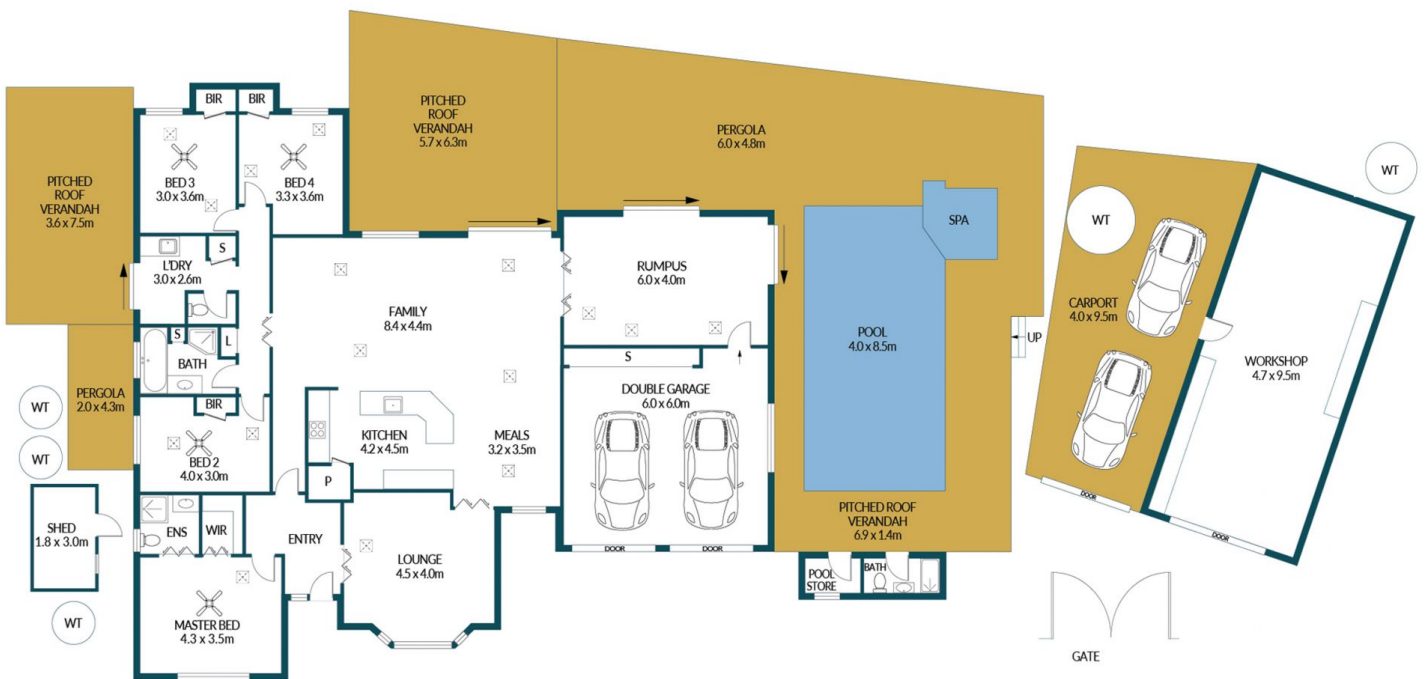
Price : \$ 950,000
Building Size : 216 sqm
Land Size : 1031 sqm
View : <https://www.edgerealty.com.au/sale/sa/north-north-east-suburbs/fairview-park/residential/house/7358289>



Mike Lao
0410390250



Tyson Bennett
0437161997



15 TAWORRI ROAD, FAIRVIEW PARK

Disclaimer

Plans shown are for marketing purposes only. All dimensions are approximate and not to scale. They are subject to errors and inaccuracies and no liability will be accepted. Interested parties should make their own enquiries. Inclusions and exclusions must be confirmed in the Residential Contract.

APPROXIMATE DIMENSIONS

| | |
|-----------|---------------------|
| LIVING: | 216.3m ² |
| GARAGE: | 36.0m ² |
| CARPORT: | 18.0m ² |
| VERANDAH: | 62.9m ² |
| PERGOLA: | 37.4m ² |
| SHED: | 5.4m ² |
| WORKSHOP: | 21.2m ² |
| TOTAL: | 397.2m ² |