



13 Christine Circuit CRAIGMORE SA

4 2 2

For an in-depth look at this home, please click on the 3D tour for a virtual walk-through or copy and paste this link into your browser

Virtual <https://my.matterport.com/show/?m=Fp2zcKFfsYt> Tour Link:

To submit an offer, please copy and paste this link into your browser:
<https://www.edgerealty.com.au/buying/make-an-offer/>

Mike Lao, Brendon Ly and Edge Realty RLA256385 are proud to present to the market this stylish, contemporary house that offers four bedroom, two bathrooms, multiple living areas and a long list of must-have features that will leave you in awe. Perfectly located in a quiet street and surrounded by equally beautiful properties, you'll find that this light and bright residence is great for entertaining, ideal

Price : \$ 555,556
Building Size : 156 sqm
Land Size : 375 sqm
View : <https://www.edgerealty.com.au/sale/sa/north-north-east-suburbs/craigmore/residential/house/7493843>



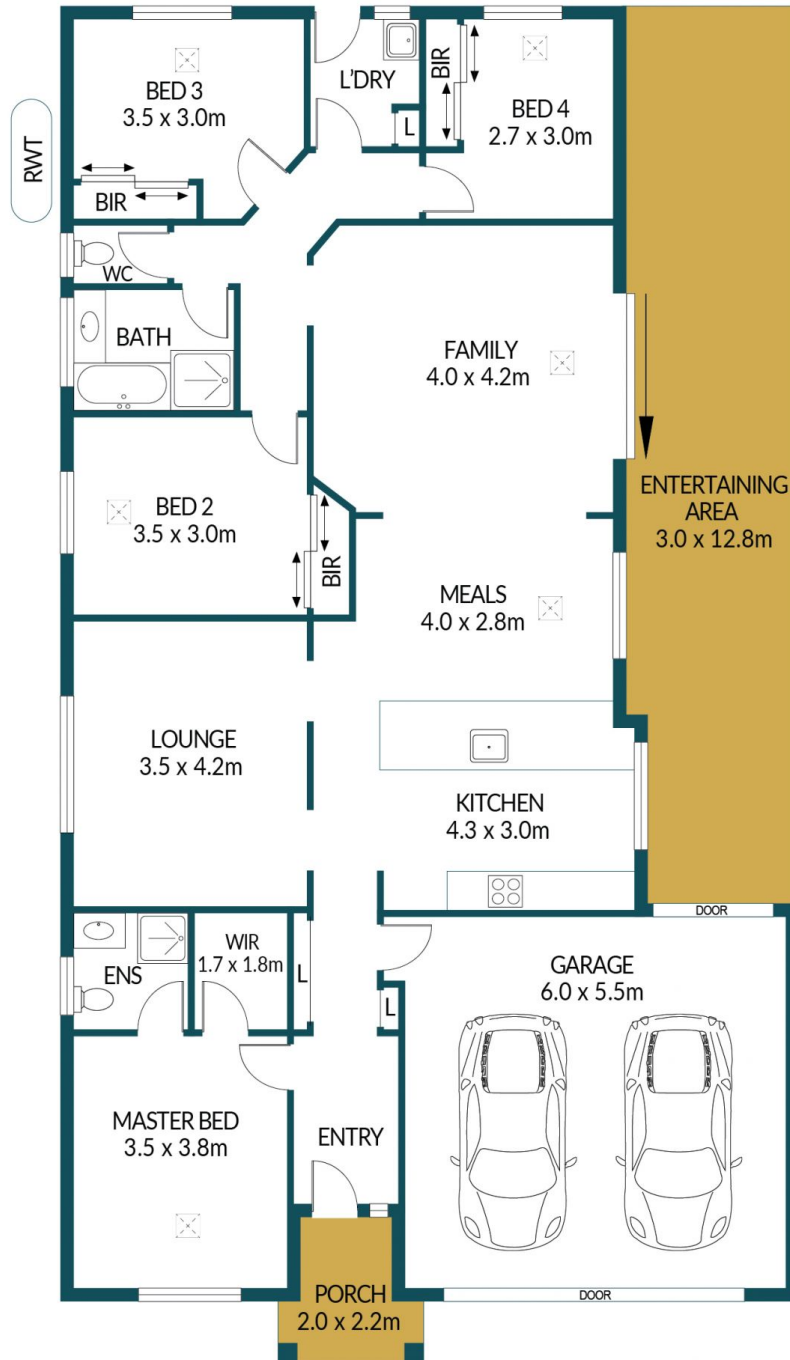
Mike Lao
0410390250



Brendon Ly
0447888444



SHED
2.0 x 2.0m



13 CHRISTINE CIRCUIT, CRAIGMORE

Disclaimer

Plans shown are for marketing purposes only. All dimensions are approximate and not to scale. They are subject to errors and inaccuracies and no liability will be accepted. Interested parties should make their own enquiries. Inclusions and exclusions must be confirmed in the Residential Contract.

APPROXIMATE DIMENSIONS

LIVING:	156.2m ²
GARAGE:	33.0m ²
PORCH/SHED:	8.4m ²
ENTERTAINING:	38.4m ²
TOTAL:	236.0m ²