



40 Bristol Crescent DAVOREN PARK SA

3 1 1

To submit an offer, please copy and paste this link into your browser:

<https://www.edgerealty.com.au/buying/make-an-offer/>

Tyson Bennett and Edge Realty RLA256385 are proud to present to the market this easy-care family home which has been crafted to take full advantage of the space on offer. The floorplan is generous and flexible while the good-size 483sqm approx lot offers ample outdoor space to enjoy. The property is currently tenanted with a fixed lease of \$350 pw until 21/06/2023.

Please note photographs of the property were taken in 2018 and are being reused as the property is currently tenanted.

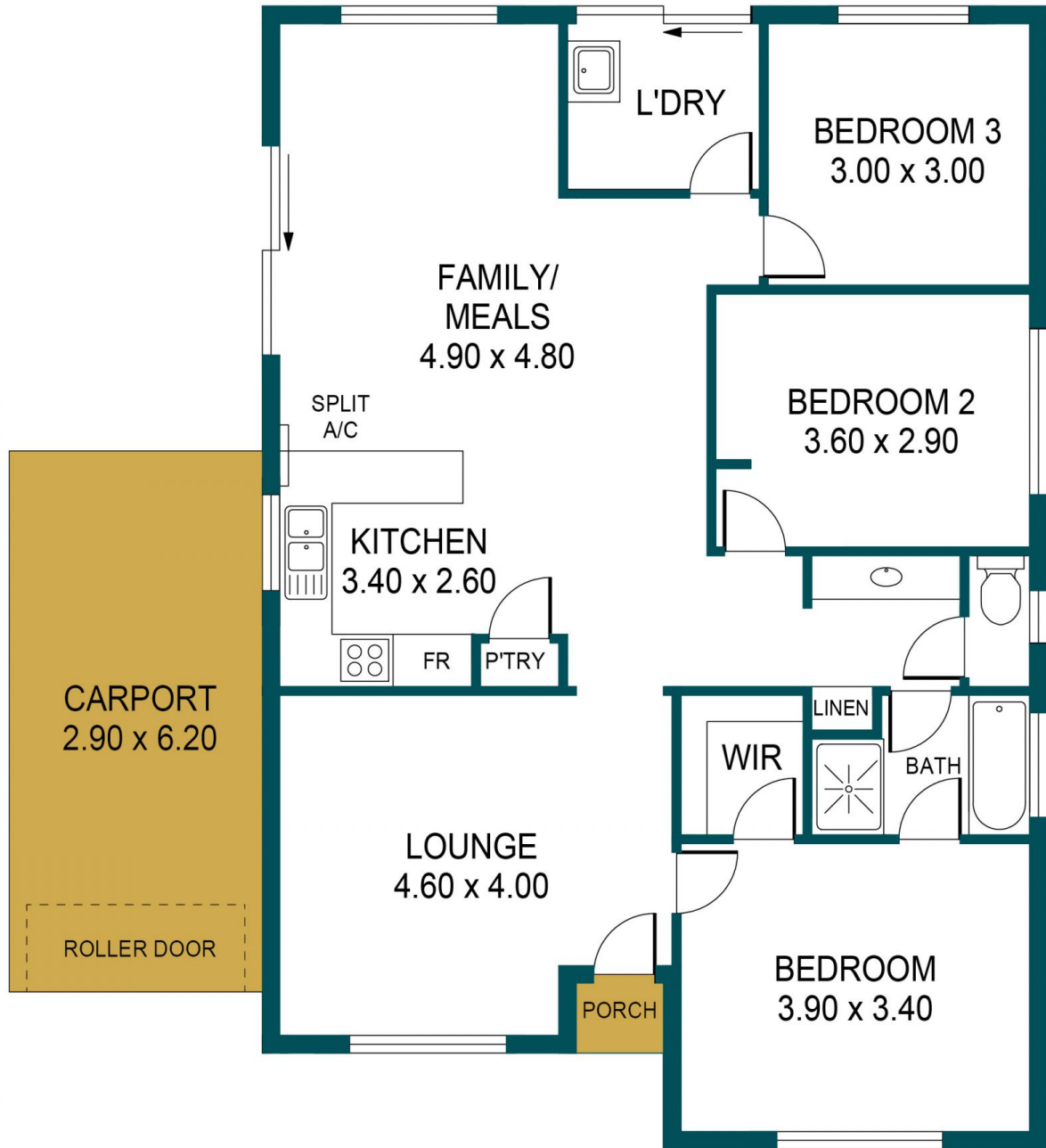
Price : \$ 410,000
Building Size : 134 sqm
Land Size : 483 sqm
View : <https://www.edgerealty.com.au/sale/sa/north-north-east-suburbs/davoren-park/residential/house/7494029>



Tyson Bennett
0437161997



Mike Lao
0410390250



40 BRISTOL CRESCENT, DAVOREN PARK

Disclaimer

Plans shown are for marketing purposes only. All dimensions are approximate and not to scale. They are subject to errors and inaccuracies and no liability will be accepted. Interested parties should make their own enquiries. Inclusions and exclusions must be confirmed in the Residential Contract.

APPROXIMATE DIMENSIONS

LIVING:	115.16m ²
CARPORT:	17.98m ²
PORCH:	0.86m ²
TOTAL:	134.0m ²