



29 Tolmer Road ELIZABETH PARK SA

3 1 2

For an in-depth look at this home, please click on the 3D tour for a virtual walk-through or copy and paste this link into your browser

Virtual <https://my.matterport.com/show/?m=cJjkeQfhVKx> Tour Link:

To submit an offer, please copy and paste this link into your browser:
<https://www.edgerealty.com.au/buying/make-an-offer/>

Mike Lao, Brendon Ly and Edge Realty RLA256385 are proud to present to the market this three-bedroom home situated on a large 780sqm block within a family-friendly street. Set to catch the eye of a wide range of savvy home hunters, including astute investors or families looking to occupy, this 1960-built property boasting low-maintenance living in a convenient location with a generously-sized

Price : \$ 375,000
Building Size : 89 sqm
Land Size : 780 sqm
View : <https://www.edgerealty.com.au/sale/sa/north-north-east-suburbs/elizabeth-park/residential/house/7497871>



Mike Lao
0410390250



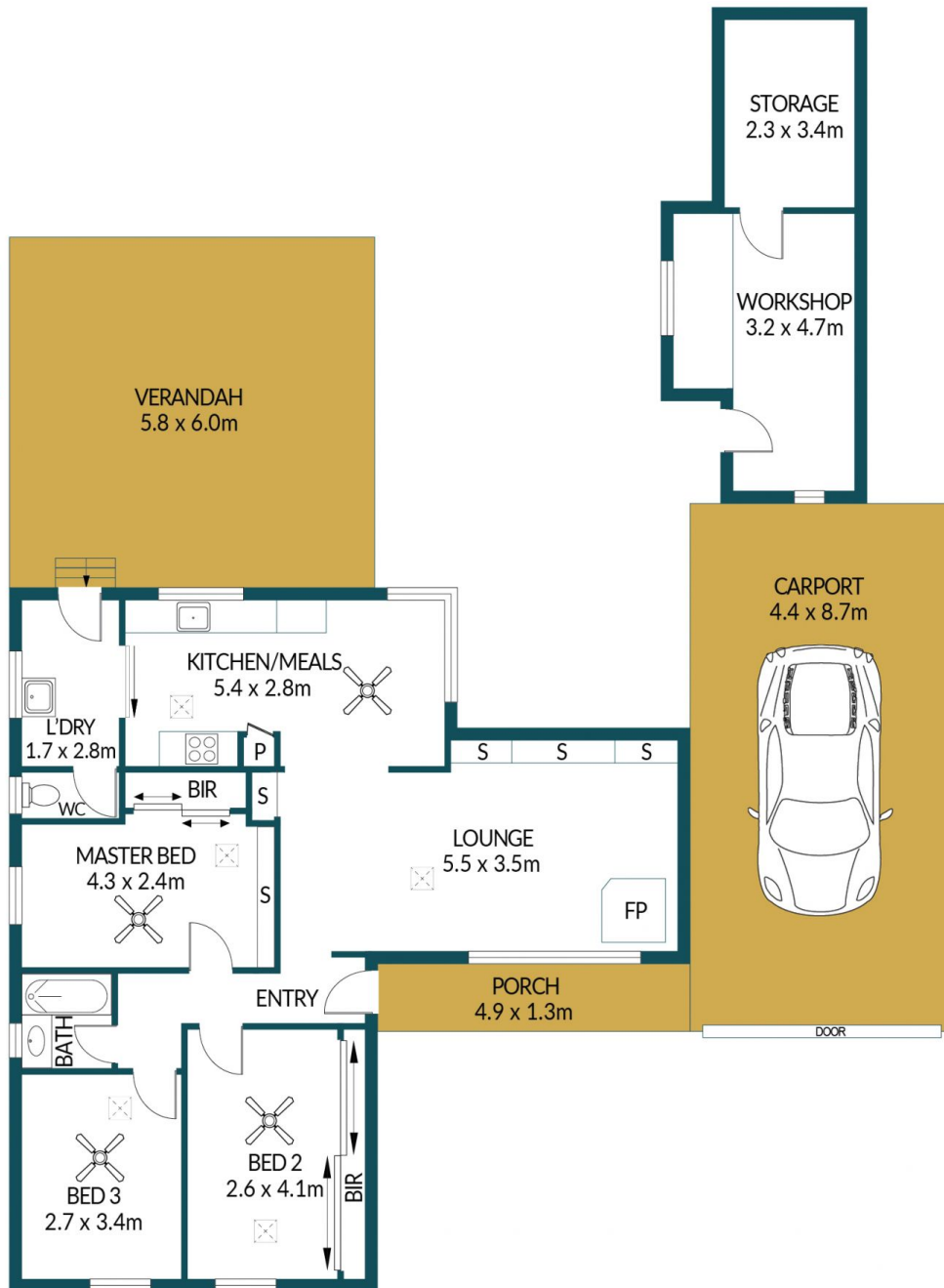
Brendon Ly
0447888444



SHED
3.9 x 2.3m

WOOD
SHED

SHED
1.5 x 2.2m



29 TOLMER ROAD, ELIZABETH PARK

Disclaimer

Plans shown are for marketing purposes only. All dimensions are approximate and not to scale. They are subject to errors and inaccuracies and no liability will be accepted. Interested parties should make their own enquiries. Inclusions and exclusions must be confirmed in the Residential Contract.

APPROXIMATE DIMENSIONS

LIVING:	89.7m ²
WORKSHOP/STORAGE:	21.3m ²
PORCH/VERANDAH:	41.2m ²
SHED/CARPORT:	51.5m ²
TOTAL:	203.7m ²