



2a Chord Road SALISBURY NORTH SA

3 2 2

For an in-depth look at this home, please click on the 3D tour for a virtual walk-through or copy and paste this link into your browser

Virtual <https://my.matterport.com/show/?m=XZcHZ2mm2C1> Tour Link:

To submit an offer, please copy and paste this link into your browser:
<https://www.edgerealty.com.au/buying/make-an-offer/>

Mike Lao, Tyson Bennett and Edge Realty RLA256385 are proud to present to the market this bright and beautiful abode that any family will be proud to call their own. Enjoy all the space and privacy of a standalone property while relishing the benefits of easy-care living so you can do more of what you love in your downtime.

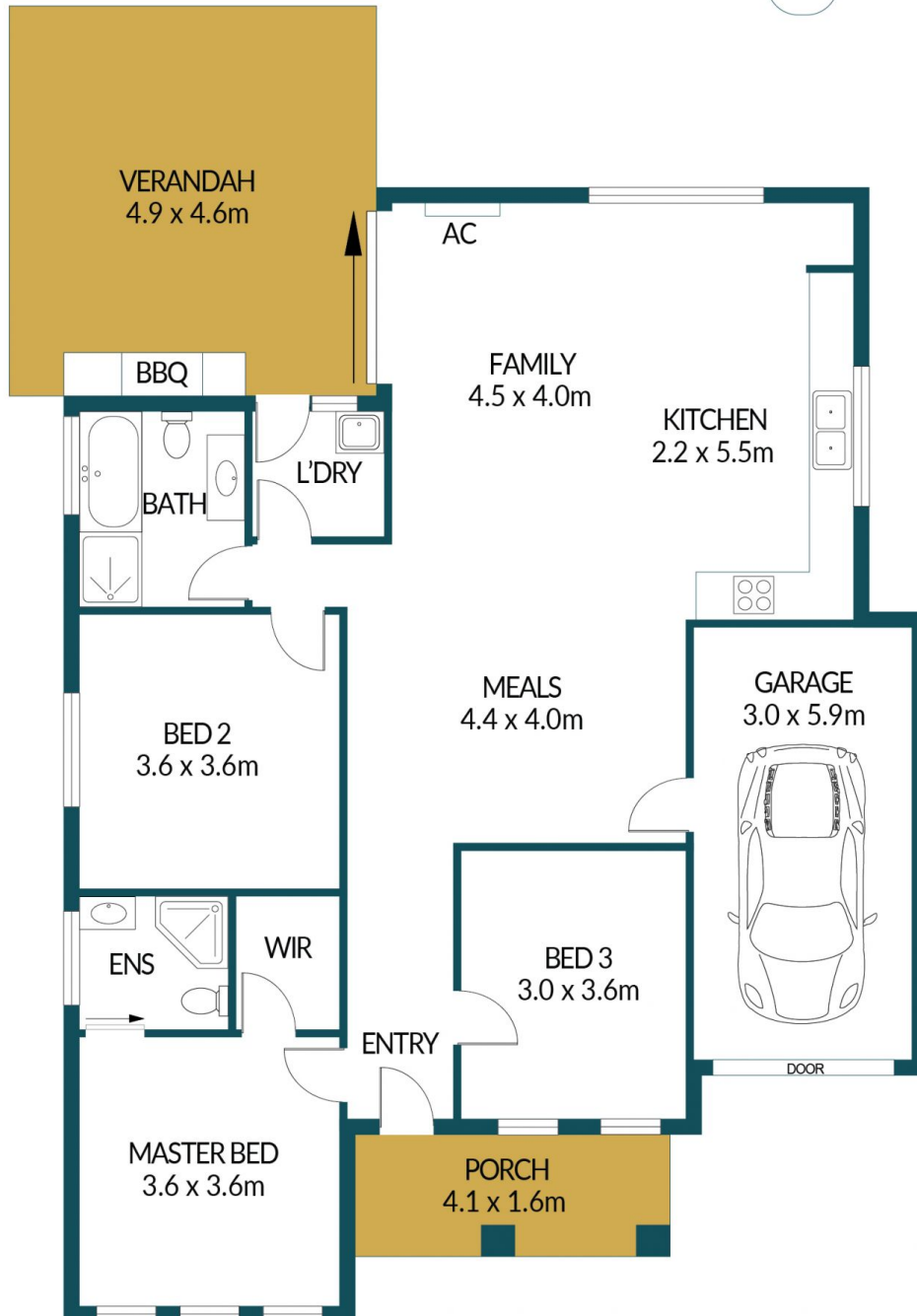
Price : \$ 490,000
Building Size : 109 sqm
Land Size : 263 sqm
View : <https://www.edgerealty.com.au/sale/sa/north-north-east-suburbs/salisbury-north/residential/house/7498934>



Mike Lao
0410390250



Tyson Bennett
0437161997



2A CHORD ROAD, SALISBURY NORTH

Disclaimer

Plans shown are for marketing purposes only. All dimensions are approximate and not to scale. They are subject to errors and inaccuracies and no liability will be accepted. Interested parties should make their own enquiries. Inclusions and exclusions must be confirmed in the Residential Contract.

APPROXIMATE DIMENSIONS

LIVING:	109.3m ²
GARAGE:	17.4m ²
PORCH:	6.6m ²
VERANDAH:	22.5m ²
TOTAL:	155.8m ²