

115 Salisbury Highway SALISBURY SA

4 2 5

For an in-depth look at this home, please click on the 3D tour for a virtual walk-through or copy and paste this link into your browser

Virtual <https://my.matterport.com/show/?m=HCRp3VBHCxx> Tour Link:

To submit an offer, please copy and paste this link into your browser:
<https://www.edgerealty.com.au/buying/make-an-offer/>

Mike Lao, Brendon Ly and Edge Realty RLA256385 are proud to present to the market this charming c1900 sandstone fronted return verandah villa set behind high fencing on a 1,171sqm block offering all the elegance and style of a time gone. Step inside to discover all the original features from ornate, sky-high ceilings and leadlight windows to beautiful fireplaces with tile insets and timber

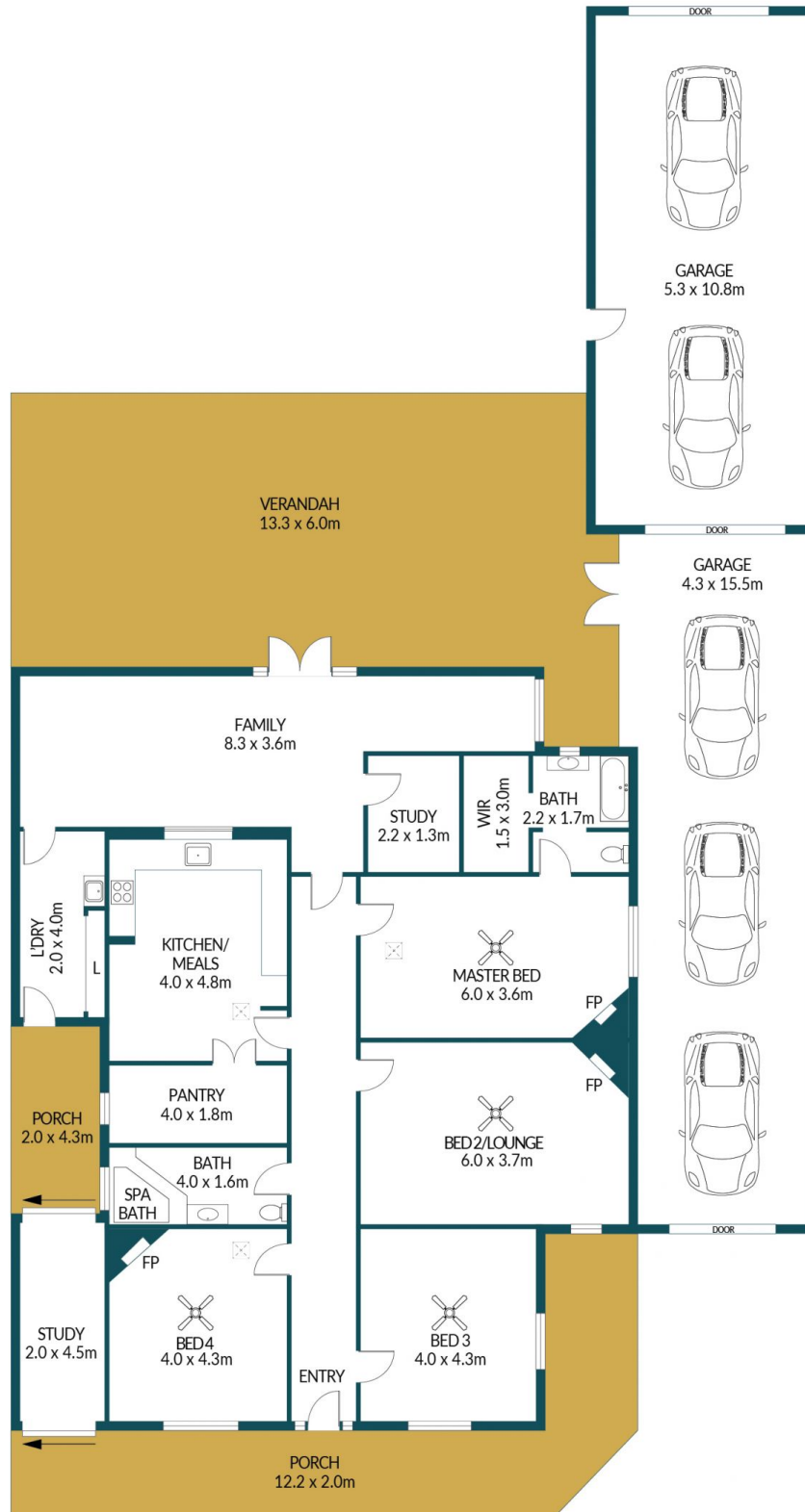
Price : \$ 755,000
Building Size : 216 sqm
Land Size : 1171 sqm
View : <https://www.edgerealty.com.au/sale/sa/north-north-east-suburbs/salisbury/residential/house/7511115>



Mike Lao
0410390250



Brendon Ly
0447888444



115 SALISBURY HIGHWAY, SALISBURY

Disclaimer

Plans shown are for marketing purposes only. All dimensions are approximate and not to scale. They are subject to errors and inaccuracies and no liability will be accepted. Interested parties should make their own enquiries. Inclusions and exclusions must be confirmed in the Residential Contract.

APPROXIMATE DIMENSIONS

LIVING:	216.6m ²
GARAGE:	123.9m ²
PORCH:	33.0m ²
VERANDAH:	19.3m ²
TOTAL:	392.8m ²