



## 57 Fairfax Road INGLE FARM SA

4 1 4

\*For an in-depth look at this home, please click on the 3D tour for a virtual walk-through or copy and paste this link into your browser\*

Virtual Tour Link:  
<https://my.matterport.com/show/?m=AKRV6KD5bL7>

To submit an offer, please copy and paste this link into your browser:  
<https://www.edgerealty.com.au/buying/make-an-offer/>

Mike Lao, Tyson Bennett and Edge Realty RLA256385 are proud to present to the market this charming 4-bedroom character-filled home that's fit for the modern family. Conveniently located on a quiet family-friendly street, you are truly spoiled for choice with a flexible floor plan and ideal for people who need a low-maintenance lifestyle with plenty of areas for entertaining.

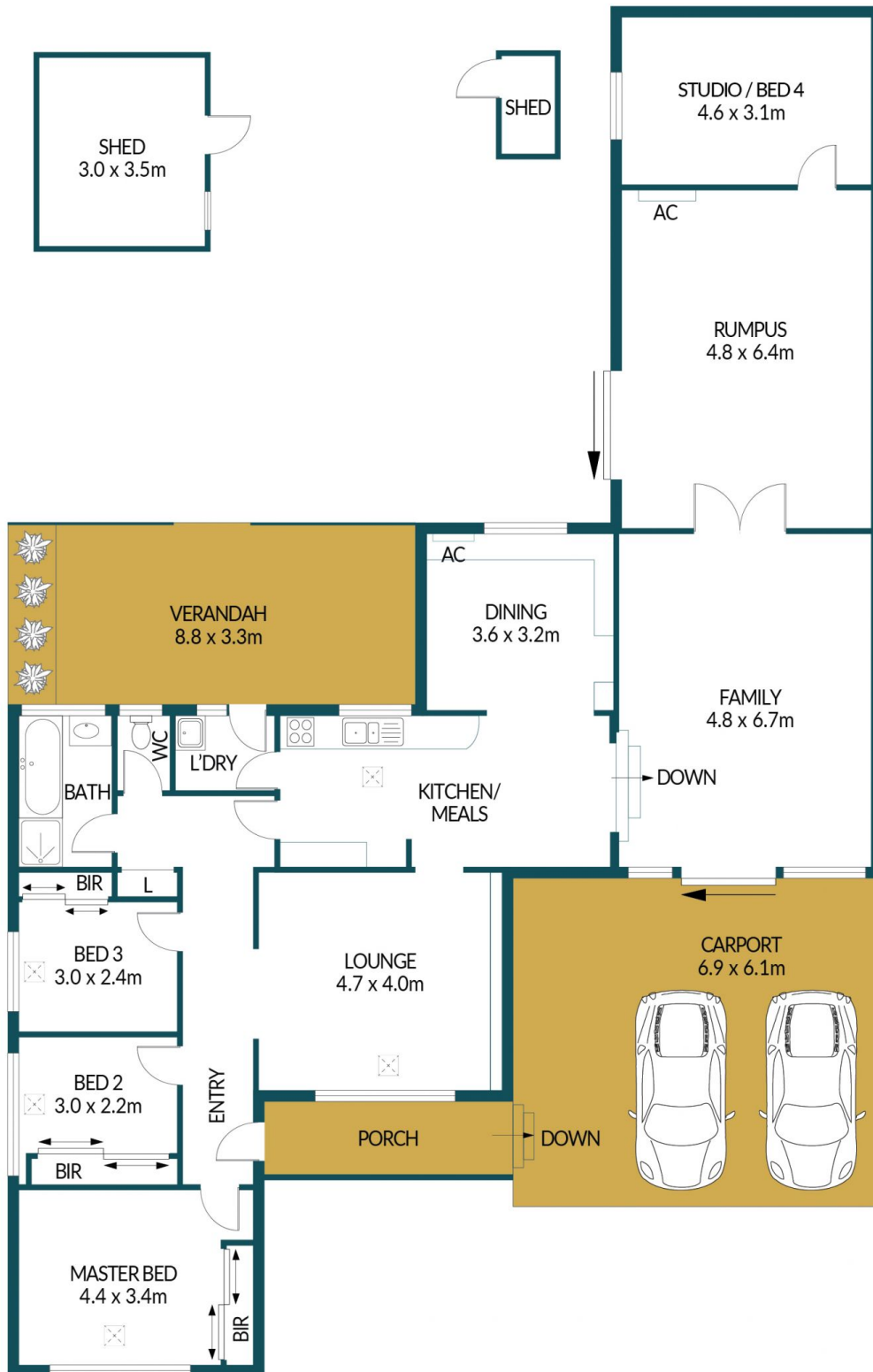
**Price** : \$ 625,000  
**Building Size** : 184 sqm  
**Land Size** : 600 sqm  
**View** : <https://www.edgerealty.com.au/sale/sa/north-north-east-suburbs/ingle-farm/residential/house/7515674>



**Mike Lao**  
0410390250



**Tyson Bennett**  
0437161997



## 57 FAIRFAX ROAD, INGLE FARM

### Disclaimer

Plans shown are for marketing purposes only. All dimensions are approximate and not to scale. They are subject to errors and inaccuracies and no liability will be accepted. Interested parties should make their own enquiries. Inclusions and exclusions must be confirmed in the Residential Contract.

### APPROXIMATE DIMENSIONS

LIVING:	184.3m <sup>2</sup>
CARPORT:	42.1m <sup>2</sup>
PORCH/SHED:	19.3m <sup>2</sup>
VERANDAH:	29.0m <sup>2</sup>
TOTAL:	274.7m <sup>2</sup>