



56 Mofflin Road ELIZABETH GROVE SA

3 1 3

For an in-depth look at this home, please click on the 3D tour for a virtual walk-through or copy and paste this link into your browser

Virtual Tour Link:
<https://my.matterport.com/show/?m=ooBB9X6YcP5>

To submit an offer, please copy and paste this link into your browser:
<https://www.edgerealty.com.au/buying/make-an-offer/>

Mike Lao, Brendon Ly and Edge Realty RLA256385 are proud to present to the market this low-maintenance property, that is just waiting for you to move in and enjoy! Perfectly situated on a sprawling lot in a tree-lined street, and featuring three bedrooms and one bathroom, it offers plenty of space to satisfy all your lifestyle needs.

Price : \$ 300,000
Building Size : 77 sqm
Land Size : 529 sqm
View : <https://www.edgerealty.com.au/sale/sa/north-north-east-suburbs/elizabeth-grove/residential/house/7535571>



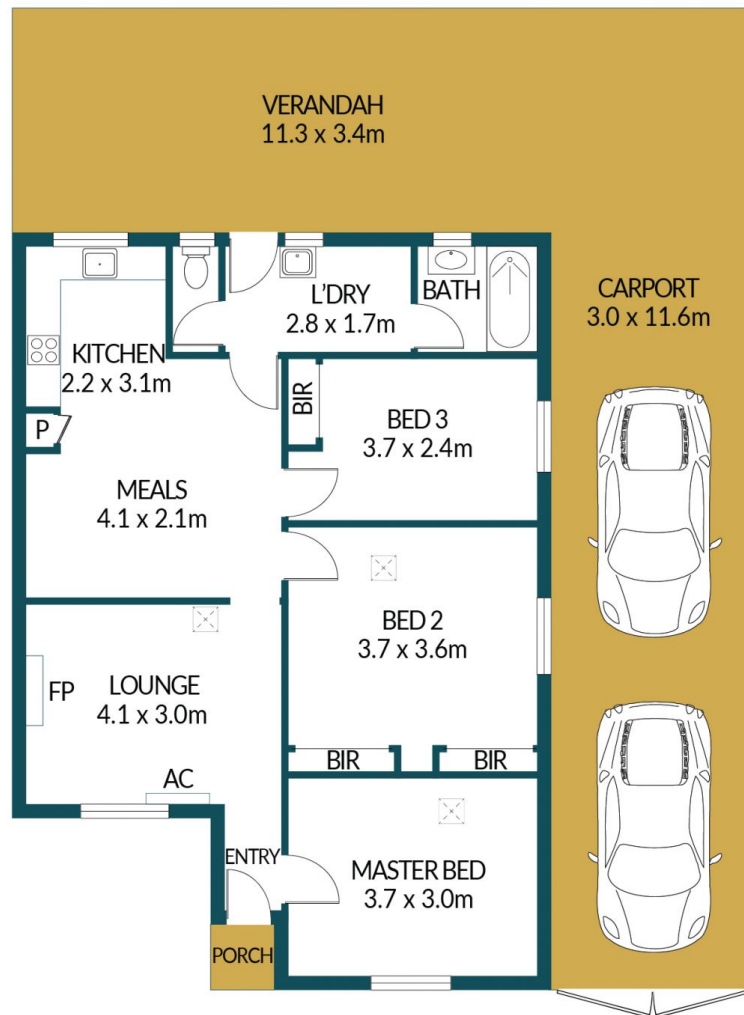
Mike Lao
0410390250



Brendon Ly
0447888444



CUBBY HOUSE/
ANIMAL
ENCLOSURE
1.8 x 1.8m



56 MOFFLIN ROAD, ELIZABETH GROVE

Disclaimer

Plans shown are for marketing purposes only. All dimensions are approximate and not to scale. They are subject to errors and inaccuracies and no liability will be accepted. Interested parties should make their own enquiries. Inclusions and exclusions must be confirmed in the Residential Contract.

APPROXIMATE DIMENSIONS

LIVING:	77.1m ²
CARPORT/VERANDAH:	71.2m ²
PORCH:	1.4m ²
CUBBY HOUSE:	6.4m ²
TOTAL:	156.1m ²