



34a Hooper Road SMITHFIELD PLAINS SA

3  2  2 

For an in-depth look at this home, please click on the 3D tour for a virtual walk-through or copy and paste this link into your browser

Virtual Tour Link:
<https://my.matterport.com/show/?m=DaaZZ9qCcPg>

To submit an offer, please copy and paste this link into your browser:
<https://www.edgerealty.com.au/buying/make-an-offer/>

Mike Lao, Tyson Bennett and Edge Realty RLA256385 are proud to present to the market this stunning home ready for you to move in and enjoy and with a long list of must-have features that will leave you in awe. The single-storey layout boasts three bedrooms, two bathrooms, a study and multiple living areas for the whole family to spread out and relax.

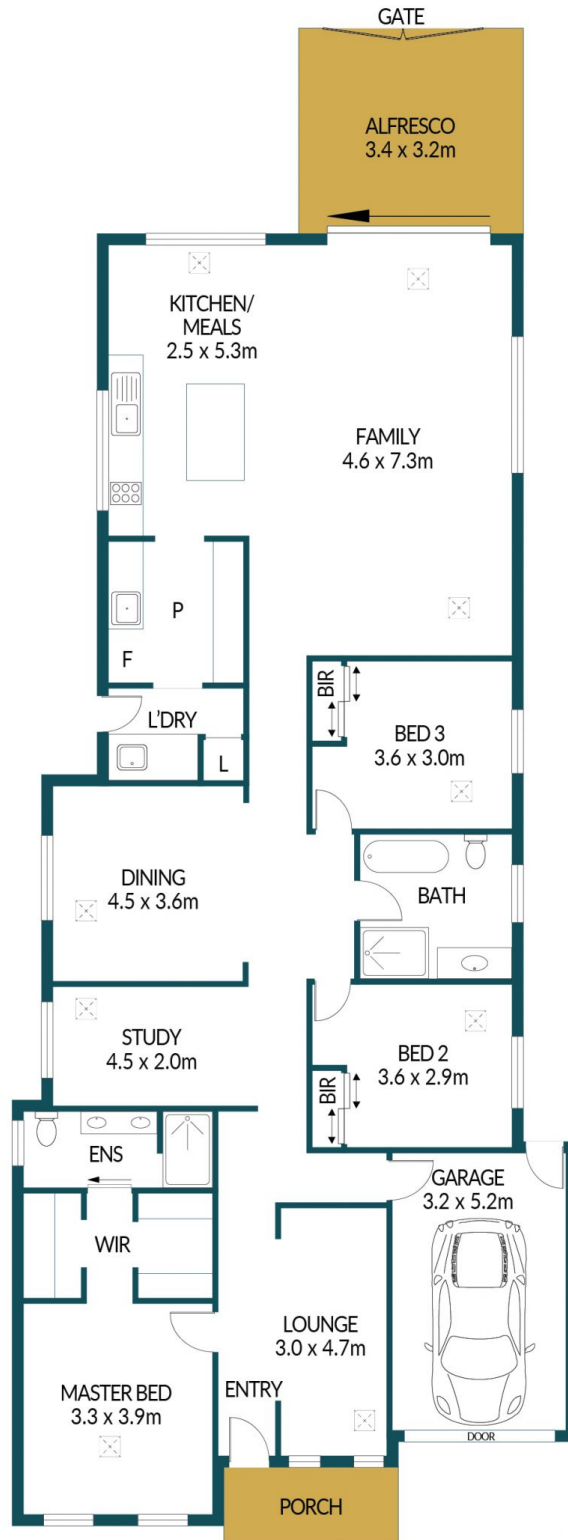
Price : \$ 505,000
Building Size : 169 sqm
Land Size : 363 sqm
View : <https://www.edgerealty.com.au/sale/sa/north-north-east-suburbs/smithfield-plains/residential/house/7538027>



Mike Lao
0410390250



Tyson Bennett
0437161997



34A HOOPER ROAD, SMITHFIELD PLAINS

Disclaimer

Plans shown are for marketing purposes only. All dimensions are approximate and not to scale. They are subject to errors and inaccuracies and no liability will be accepted. Interested parties should make their own enquiries. Inclusions and exclusions must be confirmed in the Residential Contract.

APPROXIMATE DIMENSIONS

LIVING:	169.2m ²
GARAGE:	16.6m ²
PORCH:	4.3m ²
ALFRESCO:	10.8m ²
TOTAL:	200.9m ²