



30 Vincent Road SMITHFIELD PLAINS SA

3  1  3 

For an in-depth look at this home, please click on the 3D tour for a virtual walk-through or copy and paste this link into your browser

Virtual Tour Link:
<https://my.matterport.com/show/?m=sUrhkraK9n>

Auction: Sunday 21st May 2023 onsite at 2:00pm (Unless Sold Prior)

To submit an offer, please copy and paste this link into your browser:
<https://www.edgerealty.com.au/buying/make-an-offer/>

Mike Lao, Brendon Ly and Edge Realty RLA256385 are proud to present to the market a property that's perfect for those with an eye for design and a love for renovating. This three-bedroom home offers plenty of scope to bring your

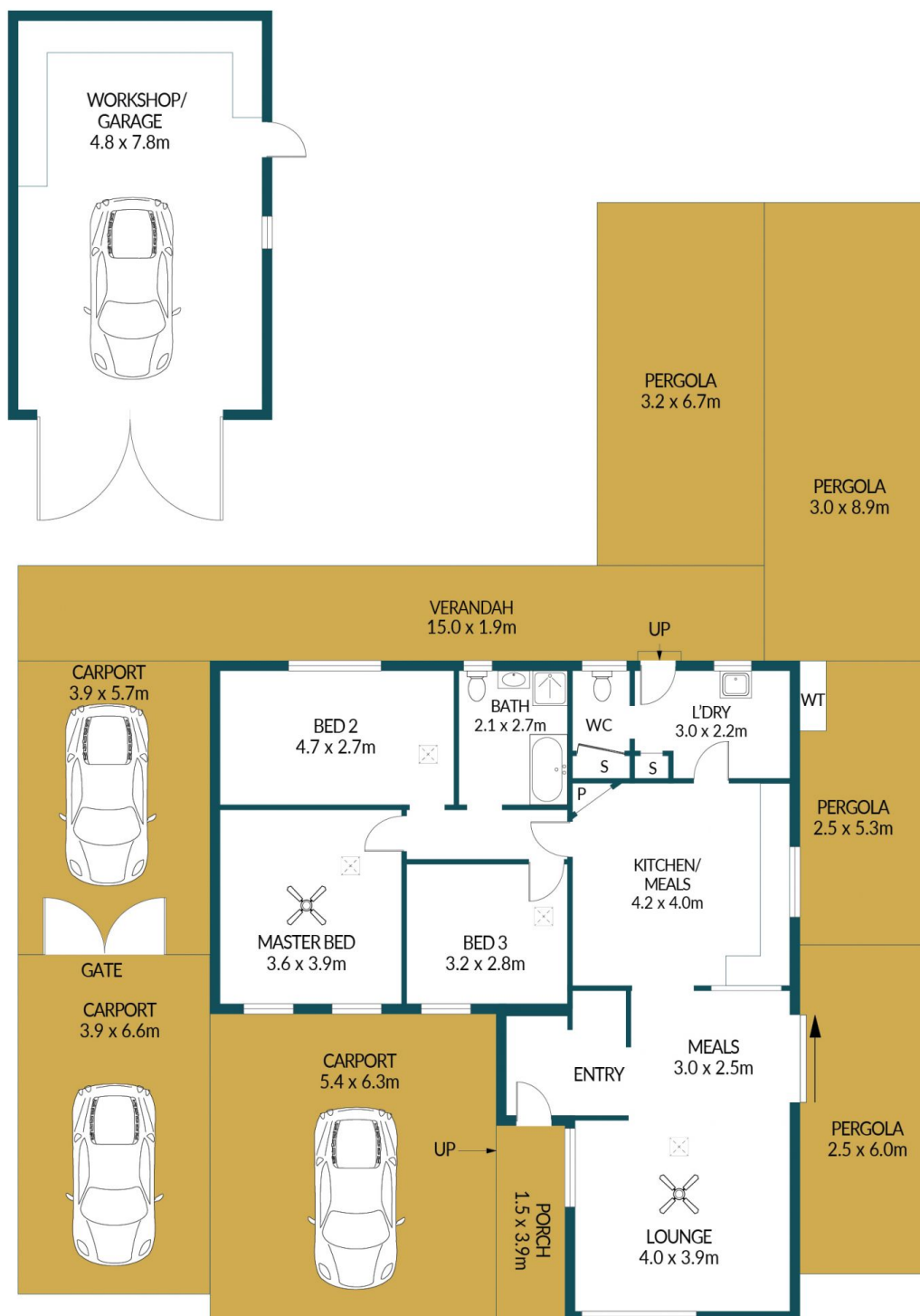
Building Size : 114 sqm
Land Size : 596 sqm
View : <https://www.edgerealty.com.au/sale/sa/north-north-east-suburbs/smithfield-plains/residential/house/7546397>



Mike Lao
 0410390250



Brendon Ly
 0447888444



30 VINCENT ROAD, SMITHFIELD PLAINS

Disclaimer

Plans shown are for marketing purposes only. All dimensions are approximate and not to scale. They are subject to errors and inaccuracies and no liability will be accepted. Interested parties should make their own enquiries. Inclusions and exclusions must be confirmed in the Residential Contract.

APPROXIMATE DIMENSIONS

LIVING:	114.5m ²
GARAGE/WORKSHOP:	37.4m ²
PERGOLA/PORCH:	110.7m ²
CARPORT:	81.9m ²
TOTAL:	344.5m ²