



23 Bronwyn Crescent SALISBURY NORTH SA

3  1  2 

For an in-depth look at this home, please click on the 3D tour for a virtual walk-through or copy and paste this link into your browser

Virtual Tour Link:
<https://my.matterport.com/show/?m=9BucTs8P7KW>

To submit an offer, please copy and paste this link into your browser:
<https://www.edgerealty.com.au/buying/make-an-offer/>

Mike Lao, Tyson Bennett and Edge Realty RLA256385 are proud to present to the market this beautifully presented three bedroom home situated at 23 Bronwyn Crescent, Salisbury North. Located on a generous sized 610sqm block, this property offers all the creature comforts that you and your family could desire.

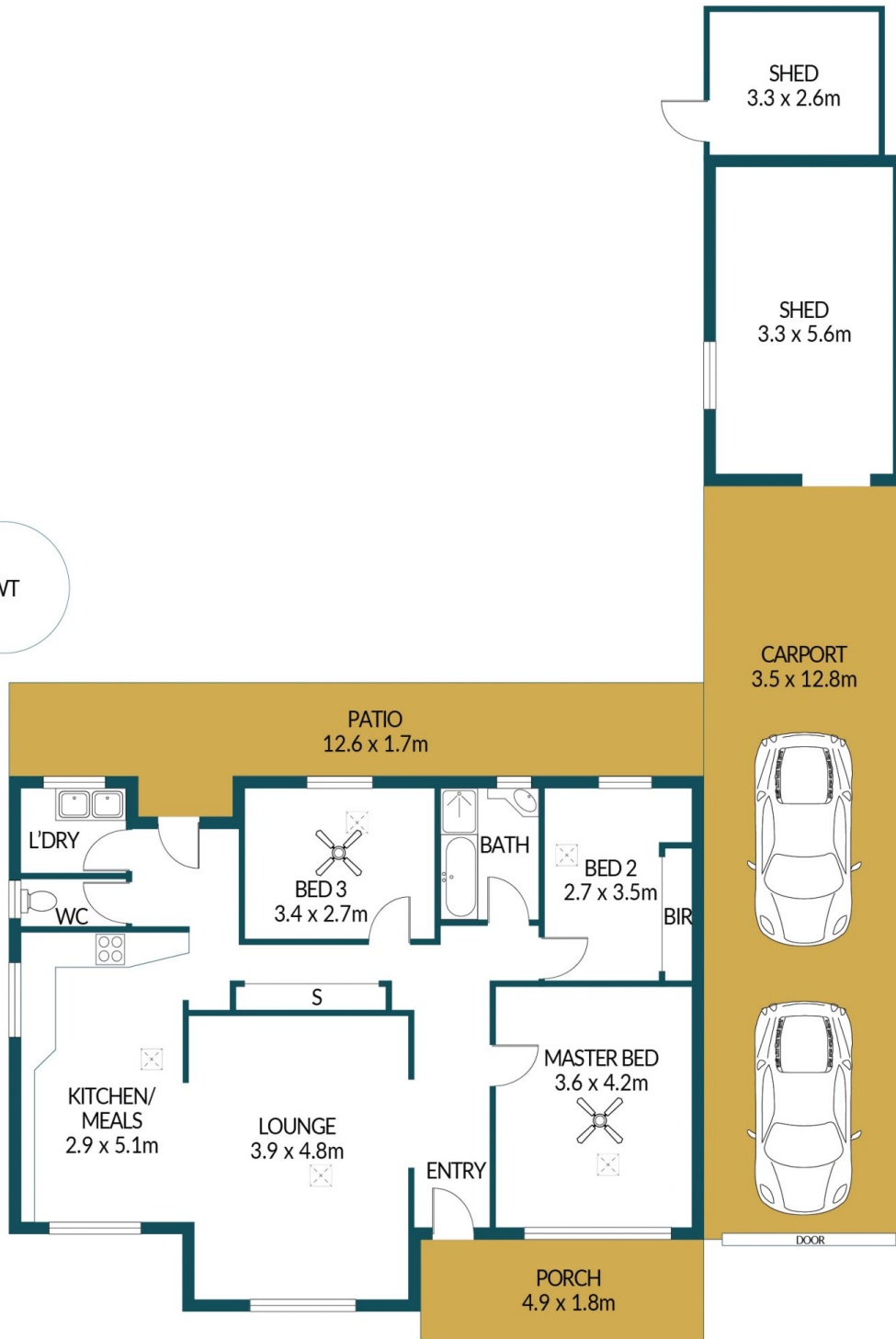
Price : \$ 455,000
Building Size : 96 sqm
Land Size : 610 sqm
View : <https://www.edgerealty.com.au/sale/sa/north-north-east-suburbs/salisbury-north/residential/house/7572016>



Mike Lao
0410390250



Tyson Bennett
0437161997



23 BRONWYN CRESCENT, SALISBURY NORTH

Disclaimer

Plans shown are for marketing purposes only. All dimensions are approximate and not to scale. They are subject to errors and inaccuracies and no liability will be accepted. Interested parties should make their own enquiries. Inclusions and exclusions must be confirmed in the Residential Contract.

APPROXIMATE DIMENSIONS

LIVING:	96.0m ²
CARPORT:	44.8m ²
PORCH:	8.8m ²
SHED:	27.1m ²
PATIO:	21.4m ²
TOTAL:	198.1m ²