



9 Sullivan Grove GAWLER SOUTH SA

4 2 2

For an in-depth look at this home, please click on the 3D tour for a virtual walk-through or copy and paste this link into your browser

Virtual Tour Link:
<https://my.matterport.com/show/?m=XzMJFyW1kMt>

To submit an offer, please copy and paste this link into your browser:
<https://www.edgerealty.com.au/buying/make-an-offer/>

Mike Lao, Brendon Ly and Edge Realty RLA256385 are proud to present to the market this grand property that sets a new standard in prestigious family living. A selection of formal and informal living spaces are spread throughout the two-storey floorplan and designed to suit every mood and occasion whether you're gathering with loved ones, hosting guests or indulging in quiet escape.

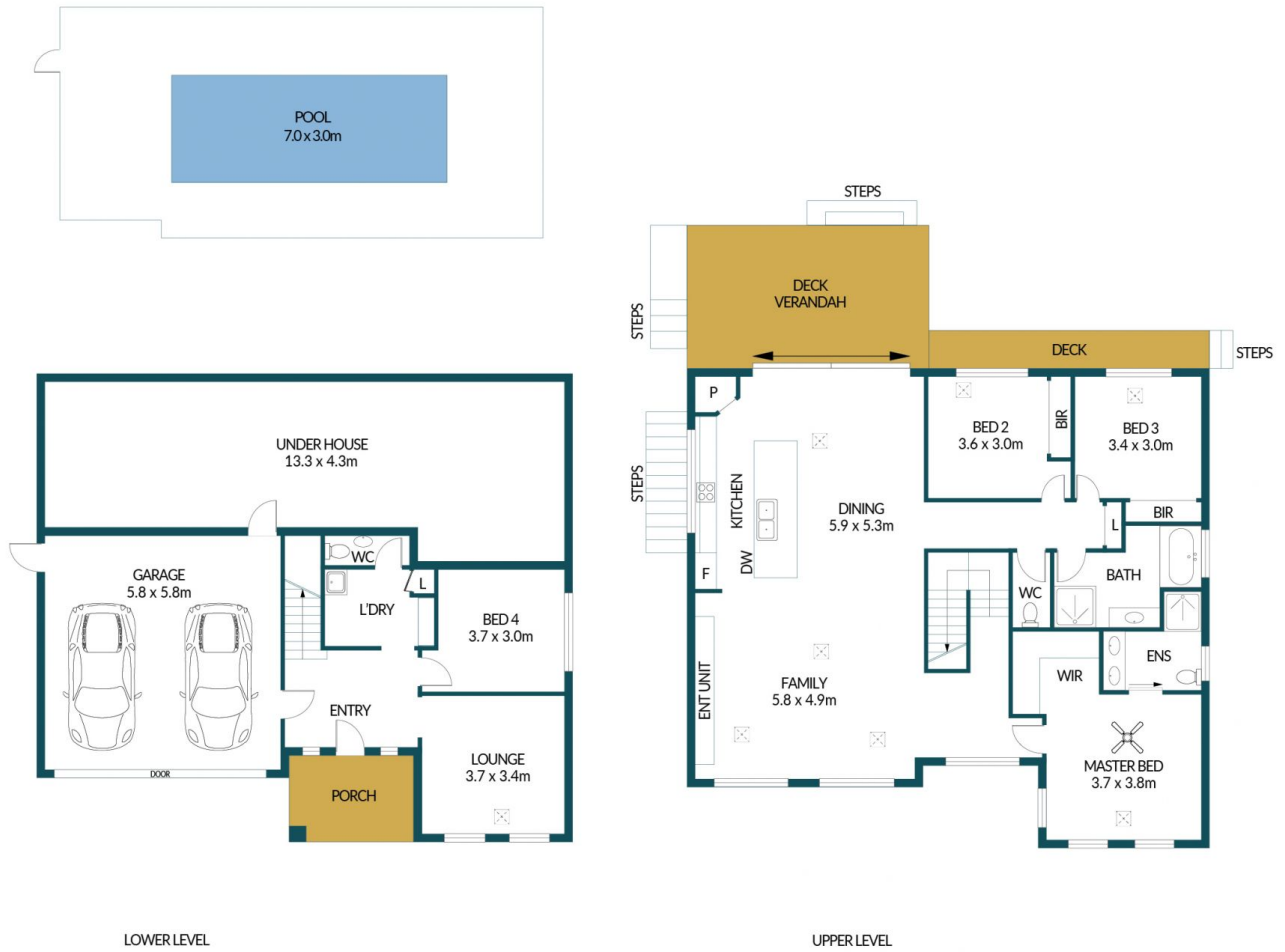
Price : \$ 875,000
Building Size : 186 sqm
Land Size : 600 sqm
View : <https://www.edgerealty.com.au/sale/sa/north-north-east-suburbs/gawler-south/residential/house/7580654>



Mike Lao
0410390250



Brendon Ly
0447888444



9 SULLIVAN GROVE, GAWLER SOUTH

Disclaimer

Plans shown are for marketing purposes only. All dimensions are approximate and not to scale. They are subject to errors and inaccuracies and no liability will be accepted. Interested parties should make their own enquiries. Inclusions and exclusions must be confirmed in the Residential Contract.

APPROXIMATE DIMENSIONS

LIVING:	186.7m ²
DECK:	33.6m ²
PORCH/STORAGE:	64.0m ²
GARAGE:	33.6m ²
TOTAL:	317.9m ²