



25 Hinsley Road SMITHFIELD PLAINS SA

3 1 1

For an in-depth look at this home, please click on the 3D tour for a virtual walk-through or copy and paste this link into your browser

Virtual Tour Link:
<https://my.matterport.com/show/?m=pnUvFxfKj4p>

To submit an offer, please copy and paste this link into your browser:
<https://www.edgerealty.com.au/buying/make-an-offer/>

Mike Lao, Brendon Ly and Edge Realty RLA256385 are proud to present to the market this wonderful home, ready to be transformed into something truly incredible with your loving touch. Gardening enthusiasts will delight in the charming front hedges and entrance gardens and the sprawling, verdant backyard adorned with established plants, flowers, and a vine-covered archway; with plenty of

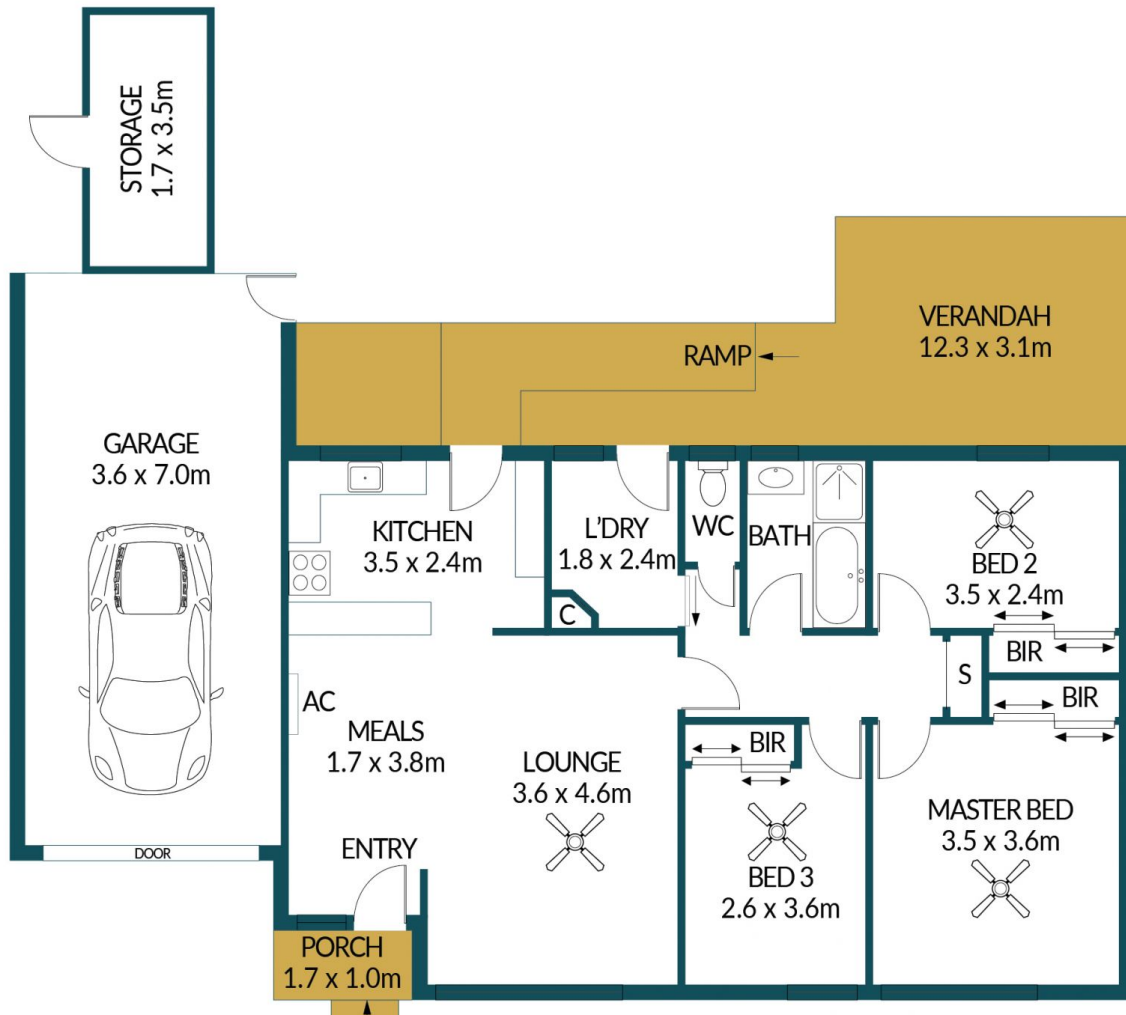
Price : \$ 328,000
Building Size : 83 sqm
Land Size : 630 sqm
View : <https://www.edgerealty.com.au/sale/sa/north-north-east-suburbs/smithfield-plains/residential/house/7580857>



Mike Lao
0410390250



Brendon Ly
0447888444



25 HINSLEY ROAD, SMITHFIELD PLAINS

Disclaimer

Plans shown are for marketing purposes only. All dimensions are approximate and not to scale. They are subject to errors and inaccuracies and no liability will be accepted. Interested parties should make their own enquiries. Inclusions and exclusions must be confirmed in the Residential Contract.

APPROXIMATE DIMENSIONS

LIVING:	83.5m ²
PORCH/GARAGE:	26.7m ²
VERANDAH:	38.1m ²
STORAGE:	5.9m ²
TOTAL:	154.2m ²