



21 Heathersett Drive SALISBURY PARK SA

3  2  5 

For an in-depth look at this home, please click on the 3D tour for a virtual walk-through or copy and paste this link into your browser

Virtual Tour Link:
<https://vtc.virtualltourscreator.com.au/share/2fd4bdd8b54d93406e4f772de8556842>

To submit an offer, please copy and paste this link into your browser:

<https://www.edgerealty.com.au/buying/make-an-offer/>

Mike Lao, Brendon Ly and Edge Realty RLA256385 are proud to present to the market this move-in ready home nestled within a prized family-friendly enclave of Salisbury Park.

Step inside to discover a light-filled and generous lounge

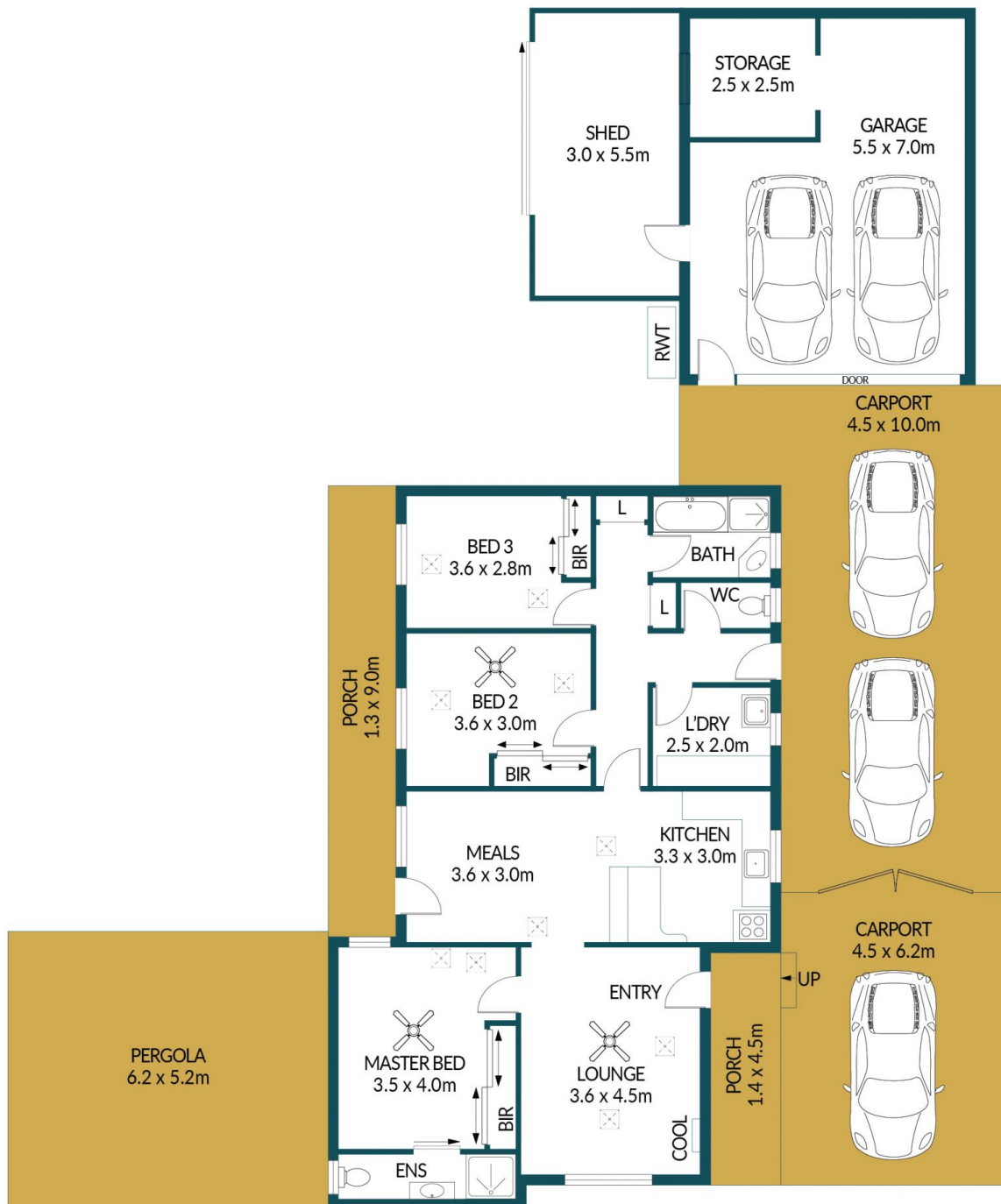
Price : \$ 470,000
Building Size : 100 sqm
Land Size : 634 sqm
View : <https://www.edgerealty.com.au/sale/sa/north-north-east-suburbs/salisbury-park/residential/house/7580968>



Mike Lao
0410390250



Brendon Ly
0447888444



21 HEATHERSETT DRIVE, SALISBURY PARK

Disclaimer

Plans shown are for marketing purposes only. All dimensions are approximate and not to scale. They are subject to errors and inaccuracies and no liability will be accepted. Interested parties should make their own enquiries. Inclusions and exclusions must be confirmed in the Residential Contract.

APPROXIMATE DIMENSIONS

LIVING:	100.8m ²
GARAGE:	38.5m ²
CARPORT/SHED:	89.4m ²
PERGOLA/PORCH:	50.2m ²
TOTAL:	278.9m ²