



## 17 Small Crescent SMITHFIELD PLAINS SA

4 2 1

\*For an in-depth look at this home, please click on the 3D tour for a virtual walk-through or copy and paste this link into your browser\*

Virtual Tour Link: <https://bit.ly/3My7mJy>

To submit an offer, please copy and paste this link into your browser:

<https://www.edgerealty.com.au/buying/make-an-offer/>

Mike Lao, Brendon Ly and Edge Realty RLA256385 are proud to present to the market 17 Small Crescent, neatly positioned in a development of modern contemporary homes and perfectly-suited to those seeking the quiet suburban lifestyle.

Stepping inside you will be greeted by the homes sleek modern feel with its open plan feel and soft modern colour

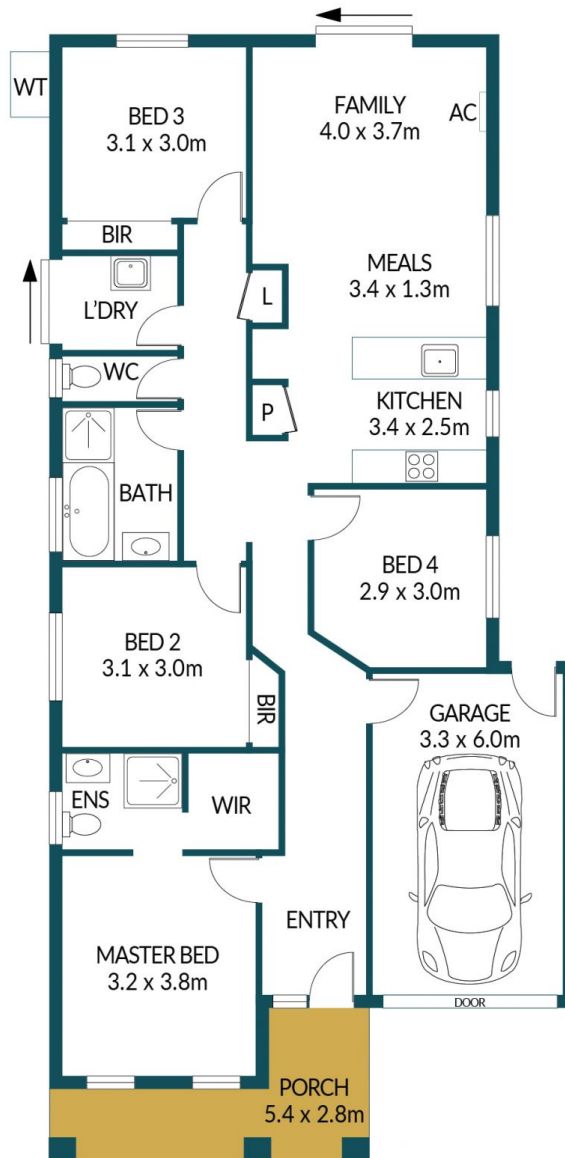
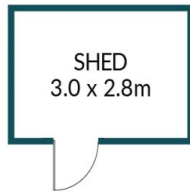
**Price** : \$ 420,000  
**Building Size** : 100 sqm  
**Land Size** : 399 sqm  
**View** : <https://www.edgerealty.com.au/sale/sa/north-north-east-suburbs/smithfield-plains/residential/house/7587946>



**Mike Lao**  
0410390250



**Brendon Ly**  
0447888444



## 17 SMALL CRESCENT, SMITHFIELD PLAINS

### Disclaimer

Plans shown are for marketing purposes only. All dimensions are approximate and not to scale. They are subject to errors and inaccuracies and no liability will be accepted. Interested parties should make their own enquiries. Inclusions and exclusions must be confirmed in the Residential Contract.

### APPROXIMATE DIMENSIONS

LIVING:	100.1m <sup>2</sup>
GARAGE:	19.8m <sup>2</sup>
PORCH/SHED:	23.5m <sup>2</sup>
TOTAL:	146.4m <sup>2</sup>