



2 Fonthill Court SALISBURY NORTH SA

3  1  2 

For an in-depth look at this home, please click on the 3D tour for a virtual walk-through or copy and paste this link into your browser

Virtual Tour Link:
<https://my.matterport.com/show/?m=tasDJaMJJSx>

To submit an offer, please copy and paste this link into your browser:
<https://www.edgerealty.com.au/buying/make-an-offer/>

Mike Lao, Brendon Ly and Edge Realty RLA256385 are proud to present to the market a delightful abode set in a peaceful cul-de-sac that will impress a wide variety of house-hunters. As functional as it is comfortable and inviting, this three-bedroom, one-bathroom home is perfect for first home buyers, young family or the savvy investor.

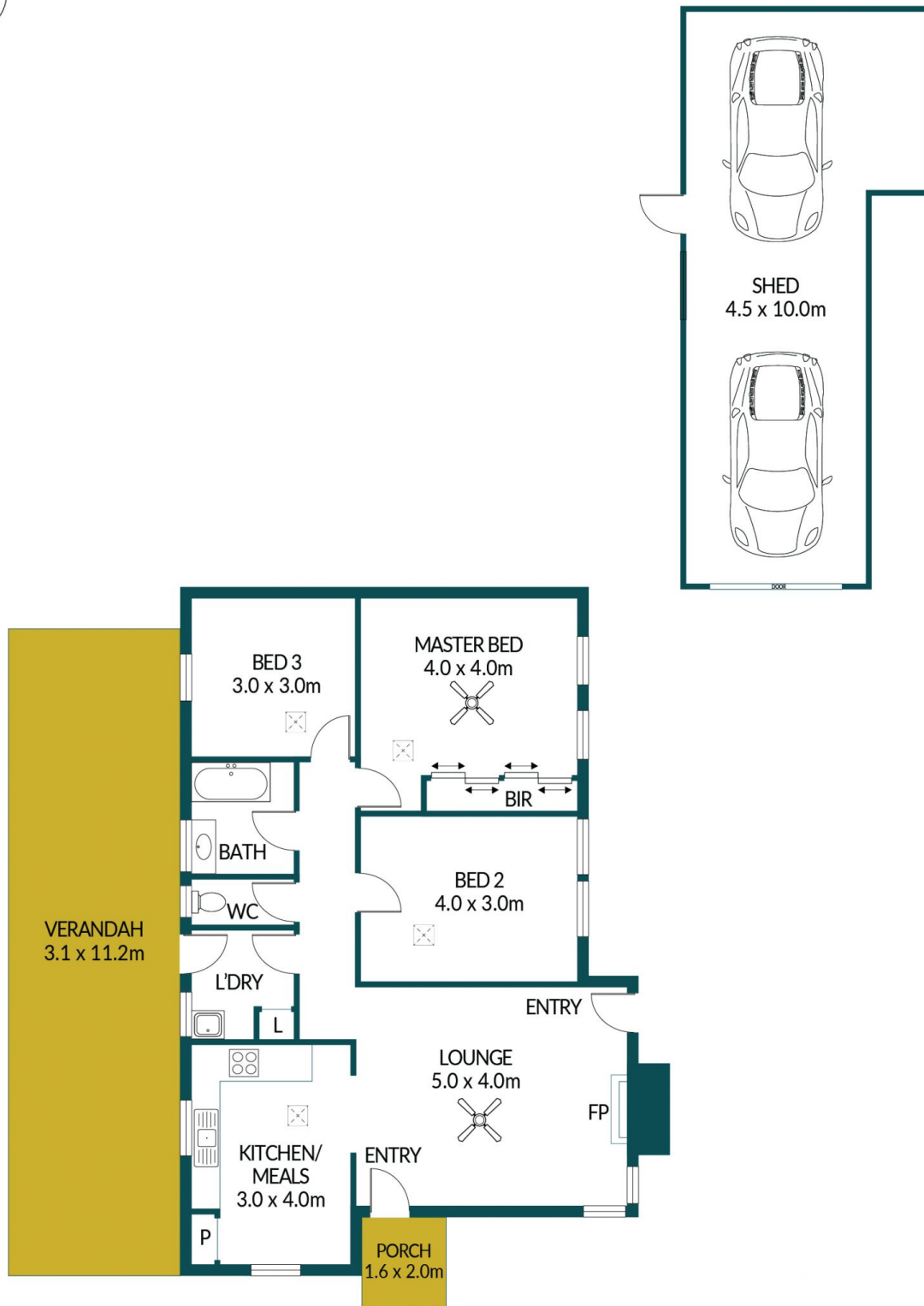
Price : \$ 415,000
Building Size : 89 sqm
Land Size : 710 sqm
View : <https://www.edgerealty.com.au/sale/sa/north-north-east-suburbs/salisbury-north/residential/house/7588102>



Mike Lao
0410390250



Brendon Ly
0447888444



2 FONTHILL COURT, SALISBURY NORTH

Disclaimer

Plans shown are for marketing purposes only. All dimensions are approximate and not to scale. They are subject to errors and inaccuracies and no liability will be accepted. Interested parties should make their own enquiries. Inclusions and exclusions must be confirmed in the Residential Contract.

APPROXIMATE DIMENSIONS

LIVING:	89.5m ²
VERANDAH:	34.7m ²
PORCH:	3.2m ²
SHED:	45.0m ²
TOTAL:	172.4m ²