

## 38 Christine Avenue HILLBANK SA

4 2 2

\*For an in-depth look at this home, please click on the 3D tour for a virtual walk-through or copy and paste this link into your browser\*

Virtual Tour Link:  
<https://my.matterport.com/show/?m=FqfXsNJQxT8>

To submit an offer, please copy and paste this link into your browser:  
<https://www.edgerealty.com.au/buying/make-an-offer/>

Mike Lao, Tyson Bennett and Edge Realty RLA256385 are proud to present to the market an exceptional property located at 38 Christine Avenue, Hillbank. Perfectly suited for growing families, this stunning two storey home offers, beautiful sunset views, a multitude of features and a convenient location that is sure to impress.

**Price** : \$ 740,000  
**Building Size** : 263 sqm  
**Land Size** : 610.5 sqm  
**View** : <https://www.edgerealty.com.au/sale/sa/north-north-east-suburbs/hillbank/residential/house/7596595>



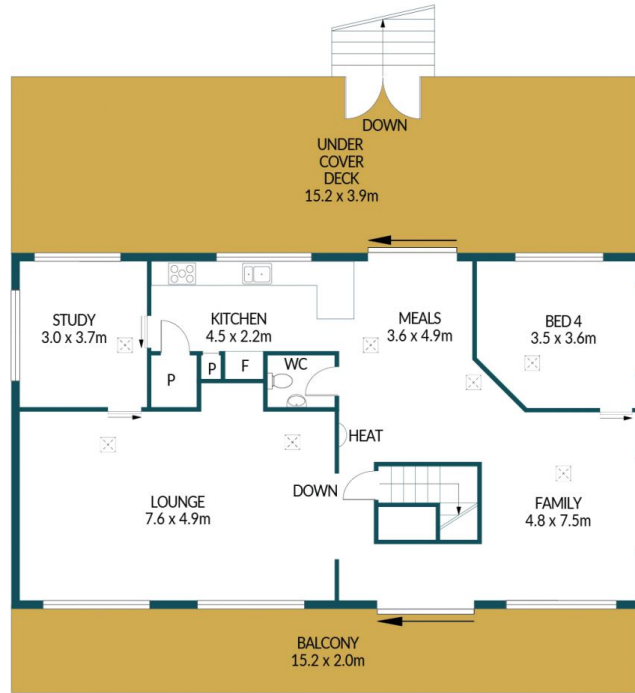
**Mike Lao**  
0410390250



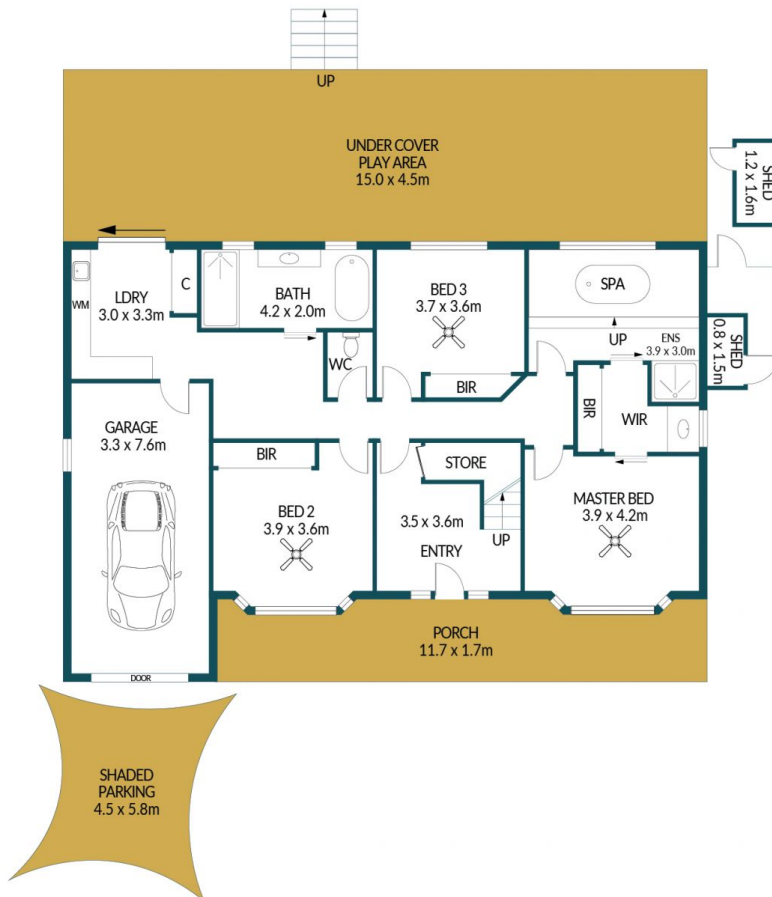
**Tyson Bennett**  
0437161997



FIRST FLOOR



GROUND FLOOR



## 38 CHRISTINE AVENUE, HILLBANK

### Disclaimer

Plans shown are for marketing purposes only. All dimensions are approximate and not to scale. They are subject to errors and inaccuracies and no liability will be accepted. Interested parties should make their own enquiries. Inclusions and exclusions must be confirmed in the Residential Contract.

### APPROXIMATE DIMENSIONS

LIVING:	263.2m <sup>2</sup>
GARAGE/SHED:	28.1m <sup>2</sup>
PORCH/BALCONY:	54.4m <sup>2</sup>
UNDER COVER/ SHADED:	141.6m <sup>2</sup>
TOTAL:	487.3m <sup>2</sup>