



12 Richmond Walk LIGHTSVIEW SA

3 2 2

For an in-depth look at this home, please click on the 3D tour for a virtual walk-through or copy and paste this link into your browser

Virtual <https://my.matterport.com/show/?m=48hWteP17uj> Tour Link:

To submit an offer, please copy and paste this link into your browser:
<https://www.edgerealty.com.au/buying/make-an-offer/>

Mike Lao, Brendon Ly and Edge Realty RLA256385 is proud to present to the market this exquisite property located at 12 Richmond Walk, Lightsvie offering the epitome of modern executive townhouse living - this residence is designed to impress. With its impeccable features and prime location, this property is a true gem that caters to first home buyers, investors, and families alike.

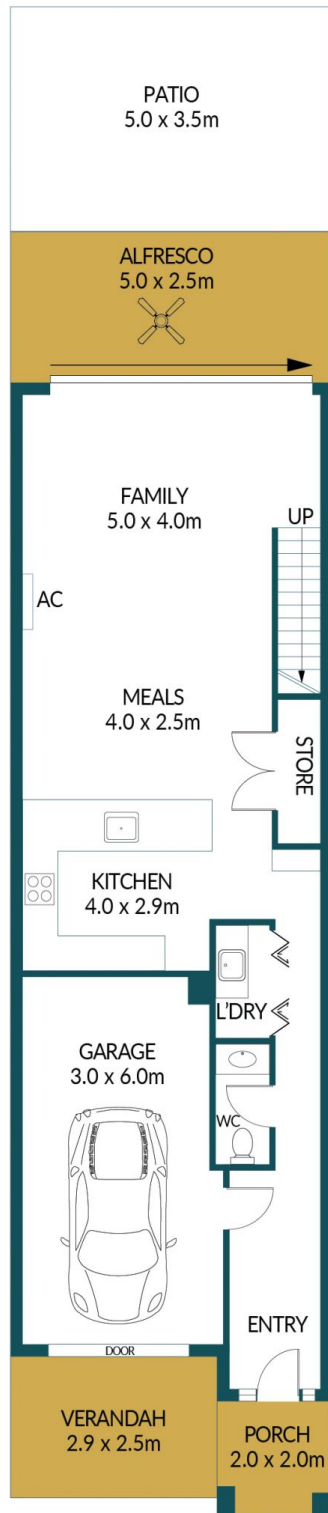
Price : \$ 671,000
Building Size : 144 sqm
Land Size : 153 sqm
View : <https://www.edgerealty.com.au/sale/sa/north-north-east-suburbs/lightsvie/residential/townhouse/7598329>



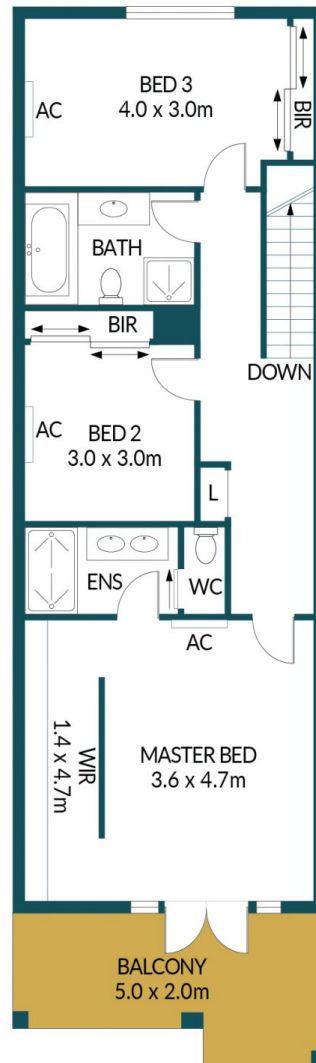
Mike Lao
0410390250



Brendon Ly
0447888444



LOWER LEVEL



UPPER LEVEL

APPROXIMATE DIMENSIONS

LIVING:	144.4m ²
GARAGE:	18.0m ²
PORCH:	4.0m ²
VERANDAH:	7.3m ²
PATIO:	17.5m ²
BALCONY:	10.0m ²
ALFRESCO:	12.5m ²
TOTAL:	213.7m²

12 RICHMOND WALK, LIGHTSVIEW

Disclaimer

Plans shown are for marketing purposes only. All dimensions are approximate and not to scale. They are subject to errors and inaccuracies and no liability will be accepted. Interested parties should make their own enquiries. Inclusions and exclusions must be confirmed in the Residential Contract.