

## 10 Dover Place ELIZABETH PARK SA

3  1  2 

\*For an in-depth look at this home, please click on the 3D tour for a virtual walk-through or copy and paste this link into your browser\*

Virtual Tour Link:  
<https://my.matterport.com/show/?m=99F9zekMmyw>

To submit an offer, please copy and paste this link into your browser:  
<https://www.edgerealty.com.au/buying/make-an-offer/>

Mike Lao, Brendon Ly and Edge Realty RLA256385, is proud to present to the market a remarkable property that checks all the boxes whether you're a first home buyer, savvy investor or looking for a new place to call home, 10 Dover Place is a stunning home offering comfortable and stylish living within a secure gated community.

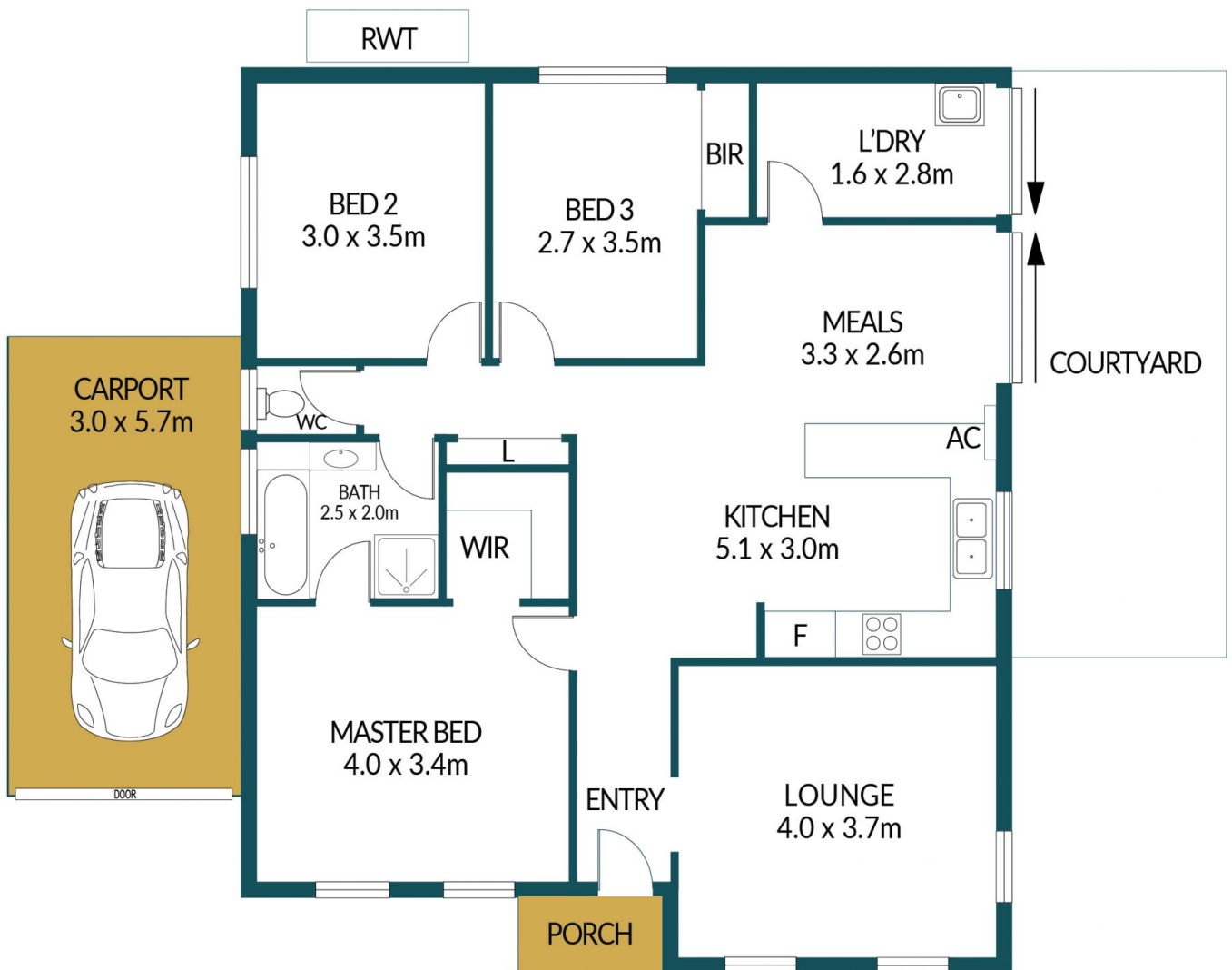
**Price** : \$ 420,000  
**Building Size** : 109 sqm  
**Land Size** : 301 sqm  
**View** : <https://www.edgerealty.com.au/sale/sa/north-north-east-suburbs/elizabeth-park/residential/house/7604004>



**Mike Lao**  
 0410390250



**Brendon Ly**  
 0447888444



## 10 DOVER PLACE, ELIZABETH PARK

### Disclaimer

Plans shown are for marketing purposes only. All dimensions are approximate and not to scale. They are subject to errors and inaccuracies and no liability will be accepted. Interested parties should make their own enquiries. Inclusions and exclusions must be confirmed in the Residential Contract.

### APPROXIMATE DIMENSIONS

LIVING:	109.5m <sup>2</sup>
CARPORT:	17.1m <sup>2</sup>
TOTAL:	126.6m <sup>2</sup>