



## 22 Finnis Street BLAKEVIEW SA

3 2 2

\*For an in-depth look at this home, please click on the 3D tour for a virtual walk-through or copy and paste this link into your browser\*

Virtual Tour Link: [bit.ly/3pivSph](https://bit.ly/3pivSph)

To submit an offer, please copy and paste this link into your browser:

<https://www.edgerealty.com.au/buying/make-an-offer/>

Mike Lao, Brendon Ly and Edge Realty RLA256385 are proud to present to the market a Metricon built, modern and stylish townhouse that offers contemporary comfort and style. With its thoughtfully designed layout, high-quality finishes, and convenient location, this home is a true gem that combines functionality with modern aesthetics. Whether you're a first-time home buyer, an investor looking for great returns, or a family seeking a comfortable and

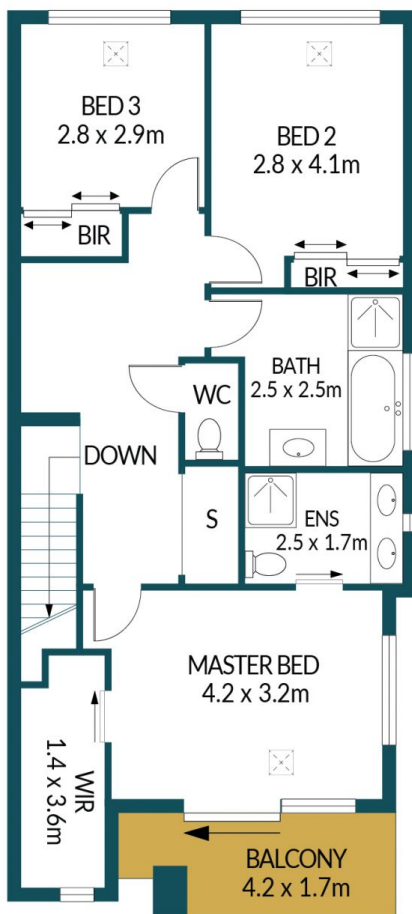
**Price** : \$ 475,000  
**Building Size** : 148 sqm  
**Land Size** : 188 sqm  
**View** : <https://www.edgerealty.com.au/sale/sa/north-north-east-suburbs/blakeview/residential/townhouse/7619927>



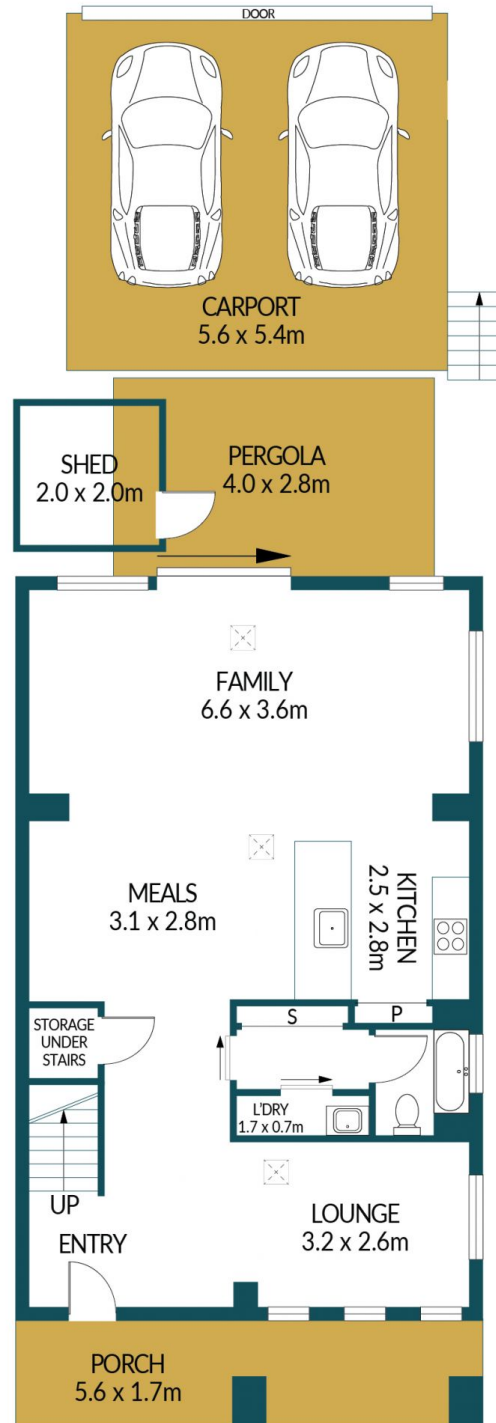
**Mike Lao**  
0410390250



**Brendon Ly**  
0447888444



UPPER LEVEL



LOWER LEVEL

## 22 FINNIS STREET, BLAKEVIEW

### Disclaimer

Plans shown are for marketing purposes only. All dimensions are approximate and not to scale. They are subject to errors and inaccuracies and no liability will be accepted. Interested parties should make their own enquiries. Inclusions and exclusions must be confirmed in the Residential Contract.

### APPROXIMATE DIMENSIONS

|          |                     |
|----------|---------------------|
| LIVING:  | 148.1m <sup>2</sup> |
| CARPORT: | 30.2m <sup>2</sup>  |
| PORCH:   | 9.5m <sup>2</sup>   |
| BALCONY: | 6.4m <sup>2</sup>   |
| TOTAL:   | 194.2m <sup>2</sup> |