



3 Tina Court ELIZABETH PARK SA

3  1  2 

For an in-depth look at this home, please click on the 3D tour for a virtual walk-through or copy and paste this link into your browser

Virtual Tour Link:
<https://my.matterport.com/show/?m=PebkGjUxeDW>

To submit an offer, please copy and paste this link into your browser:

<https://www.edgerealty.com.au/buying/make-an-offer/>

Mike Lao, Brendon Ly and Edge Realty RLA256385 is proud to present to the market a property that encapsulates modern, low-maintenance living in the highly sought-after location of 3 Tina Court, Elizabeth Park, within a secure gated estate, offering peace of mind and a sense of exclusivity. This stunning residence is perfectly suited for families, first home buyers, investors, and downsizers,

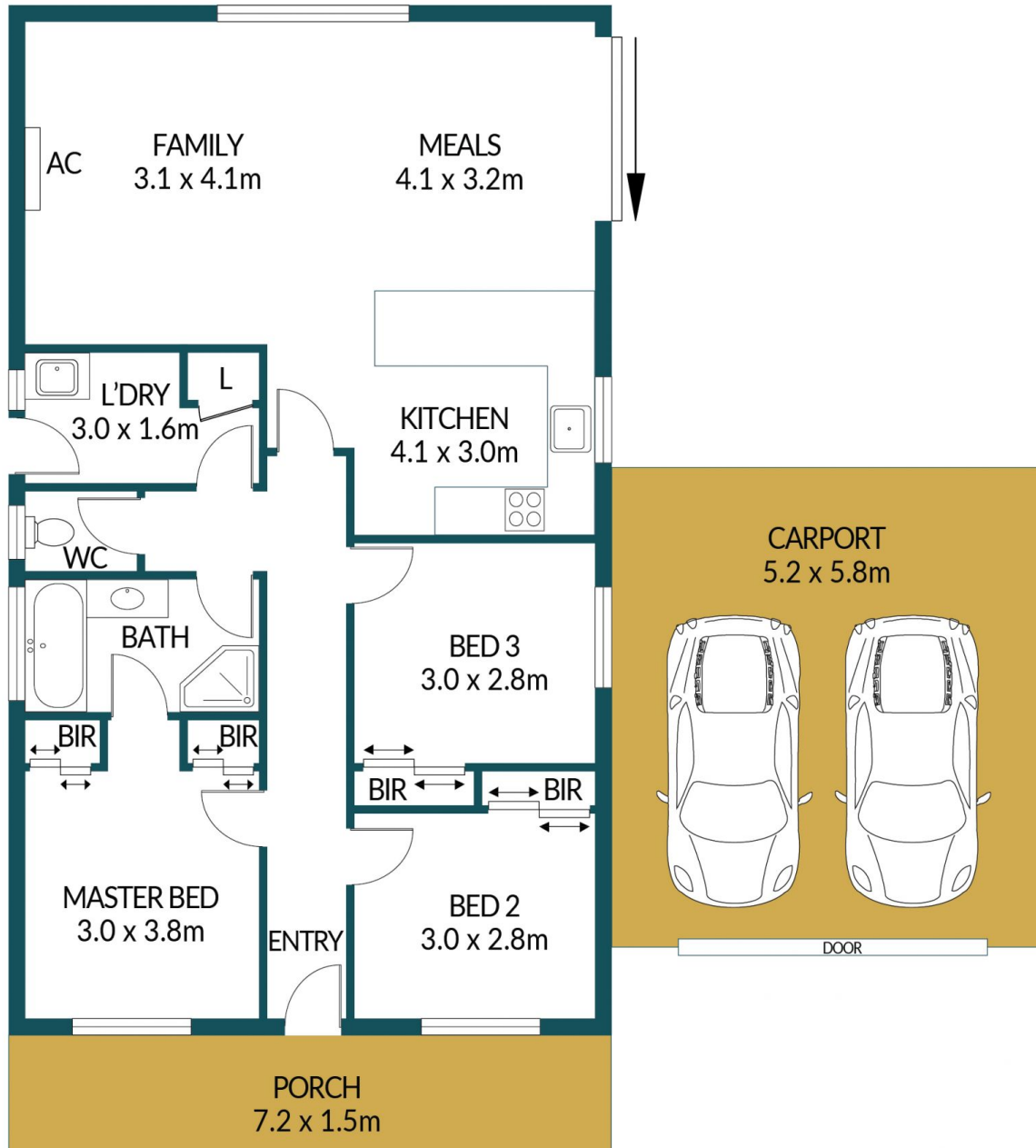
Price : \$ 429,000
Building Size : 95 sqm
Land Size : 292 sqm
View : <https://www.edgerealty.com.au/sale/sa/north-north-east-suburbs/elizabeth-park/residential/house/7629227>



Mike Lao
 0410390250



Brendon Ly
 0447888444



3 TINA COURT, ELIZABETH PARK

Disclaimer

Plans shown are for marketing purposes only. All dimensions are approximate and not to scale. They are subject to errors and inaccuracies and no liability will be accepted. Interested parties should make their own enquiries. Inclusions and exclusions must be confirmed in the Residential Contract.

APPROXIMATE DIMENSIONS

LIVING:	95.9m ²
CARPORT:	30.2m ²
PORCH:	10.8m ²
TOTAL:	136.9m ²