



12 Hindmarsh Terrace LIGHTSVIEW SA

3 2 1

For an in-depth look at this home, please click on the 3D tour for a virtual walk-through or copy and paste this link into your browser

Virtual <https://my.matterport.com/show/?m=Po8tK3edj5r> Tour Link:

To submit an offer, please copy and paste this link into your browser:
<https://www.edgerealty.com.au/buying/make-an-offer/>

Mike Lao, Brendon Ly and Edge Realty RLA256385 are proud to present to the market this stylish, spacious and centrally located townhouse in Lightsvew. Set across two levels, this home features modern finishes and fixtures throughout as well as a neutral colour scheme and plenty of soft natural light.

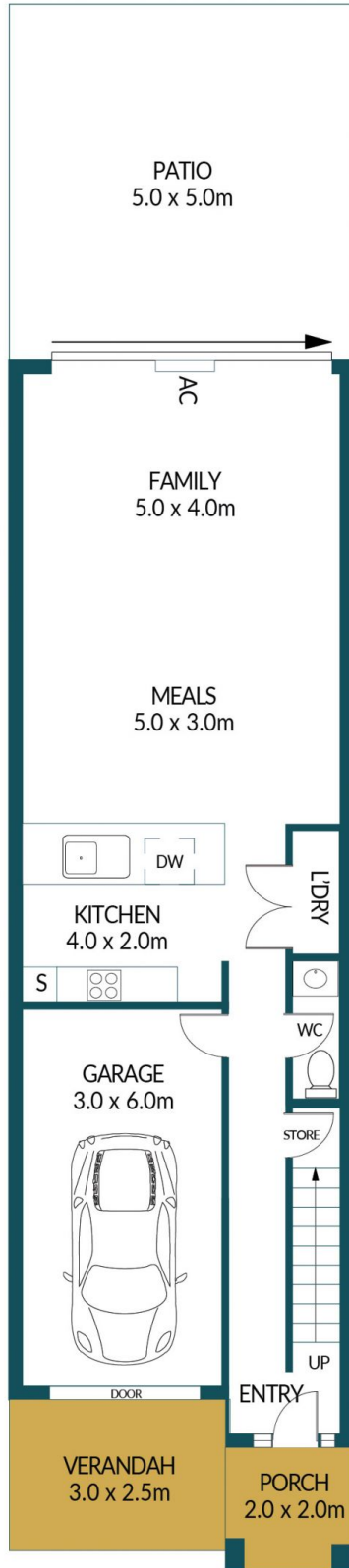
Price : \$ 615,000
Building Size : 125 sqm
Land Size : 151 sqm
View : <https://www.edgerealty.com.au/sale/sa/north-north-east-suburbs/lightsvew/residential/townhouse/7637671>



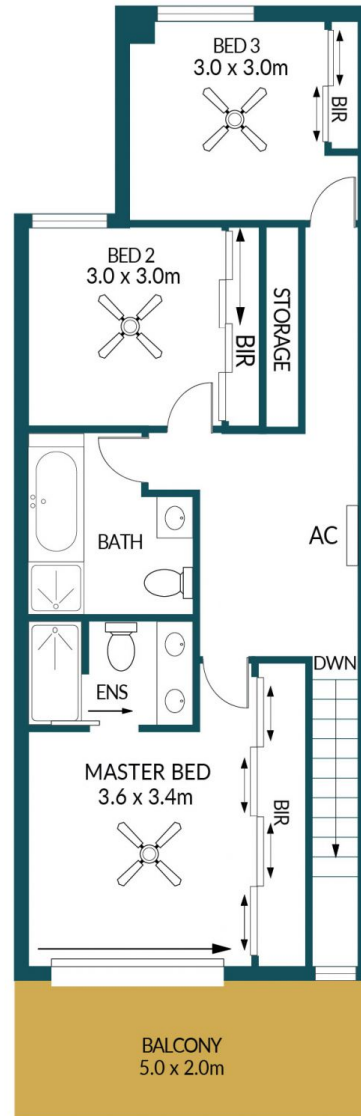
Mike Lao
0410390250



Brendon Ly
0447888444



LOWER LEVEL



UPPER LEVEL

12 HINDMARSH TERRACE, LIGHTSVIEW

Disclaimer

Plans shown are for marketing purposes only. All dimensions are approximate and not to scale. They are subject to errors and inaccuracies and no liability will be accepted. Interested parties should make their own enquiries. Inclusions and exclusions must be confirmed in the Residential Contract.

APPROXIMATE DIMENSIONS

LIVING:	125.0m ²
GARAGE:	18.0m ²
PORCH:	4.0m ²
VERANDAH:	7.5m ²
PATIO:	25.0m ²
BALCONY:	10.0m ²
TOTAL:	189.5m ²