



31 Coppleridge Drive ELIZABETH VALE SA

3 1 5

For an in-depth look at this home, please click on the 3D tour for a virtual walk-through or copy and paste this link into your browser

Virtual Tour Link: <https://bit.ly/31Coppleridge>

To submit an offer, please copy and paste this link into your browser:

<https://www.edgerealty.com.au/buying/make-an-offer/>

Mike Lao, Brendon Ly and Edge Realty RLA256385 are proud to present to the market a home full of possibilities - with multiple spaces to completely transform, this is a property that you can make your own or continue to the tenancy and reap the rewards. The property is currently tenanted with a fixed lease of \$410 pw in place until 21/08/2024.

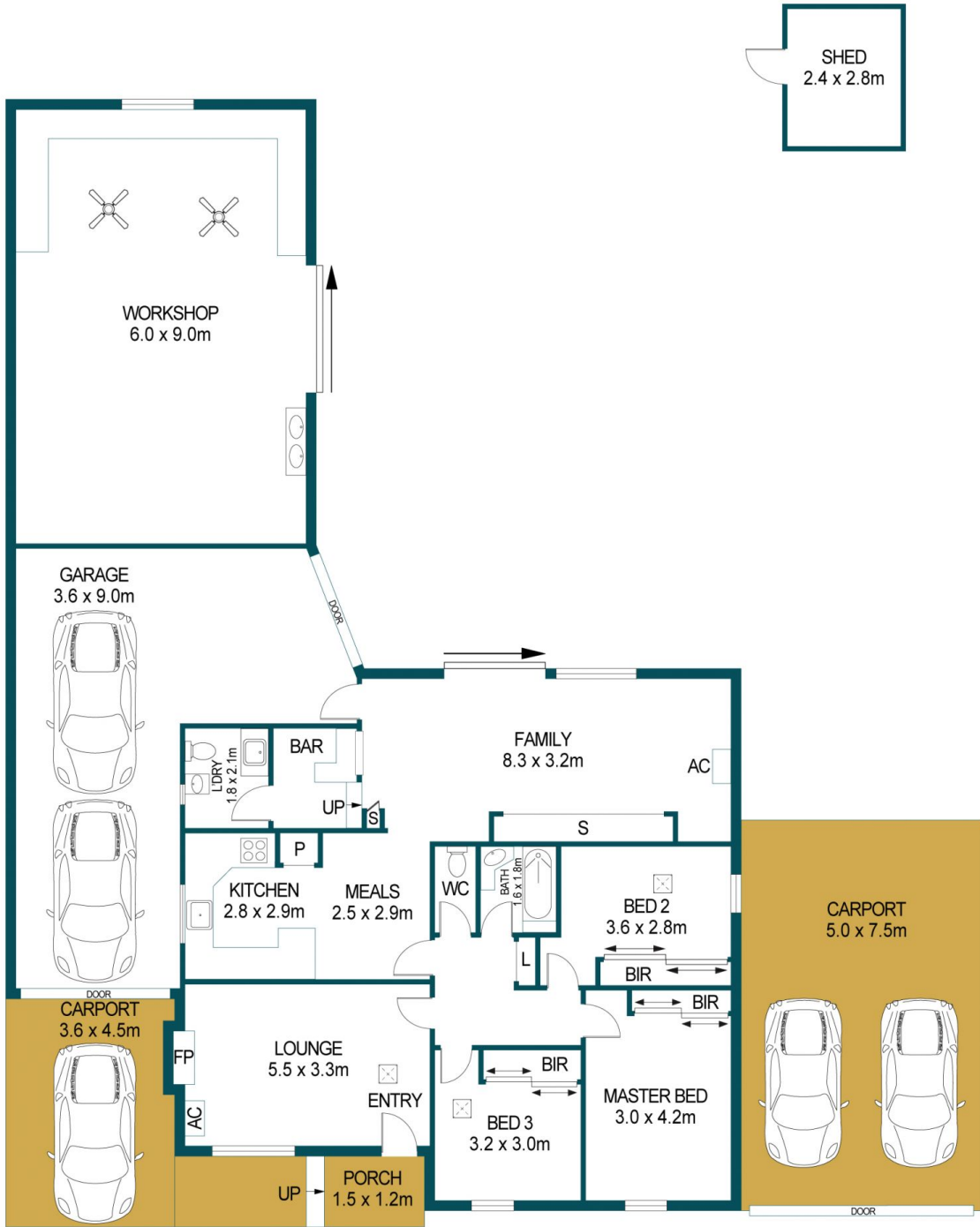
Price : \$ 530,000
Building Size : 111 sqm
Land Size : 845.49 sqm
View : <https://www.edgerealty.com.au/sale/sa/north-north-east-suburbs/elizabeth-vale/residential/house/7648003>



Mike Lao
0410390250



Brendon Ly
0447888444



APPROXIMATE DIMENSIONS	
LIVING:	111.5m ²
PORCH:	1.8m ²
CARPORT:	44.7m ²
GARAGE:	32.4m ²
WORKSHOP:	54.0m ²
SHED:	6.7m ²
TOTAL:	251.1m ²

31 COPPLERIDGE DRIVE, ELIZABETH VALE

DISCLAIMER

PLANS SHOWN ARE FOR MARKETING PURPOSES ONLY, ALL DIMENSIONS ARE APPROXIMATE AND NOT TO SCALE. THEY ARE SUBJECT TO ERRORS AND INACCURACIES AND NO LIABILITY WILL BE ACCEPTED. INTERESTED PARTIES SHOULD MAKE THEIR OWN ENQUIRIES.

