



### 125 Lakeside Drive ANDREWS FARM SA

3  1  1 

\*For an in-depth look at this home, please click on the 3D tour for a virtual walk-through or copy and paste this link into your browser\*

Virtual Tour Link:  
<https://my.matterport.com/show/?m=BEM9FCVoWUJ>

To submit an offer, please copy and paste this link into your browser:  
<https://www.edgerealty.com.au/buying/make-an-offer/>

Mike Lao, Brendon Ly and Edge Realty RLA256385 are proud to present to the market this stylish home set within a peaceful pocket of Andrews Farm. Everyone from young families dreaming of a stylish place to call their own through to downsizers and investors will be vying to secure this impressive abode.

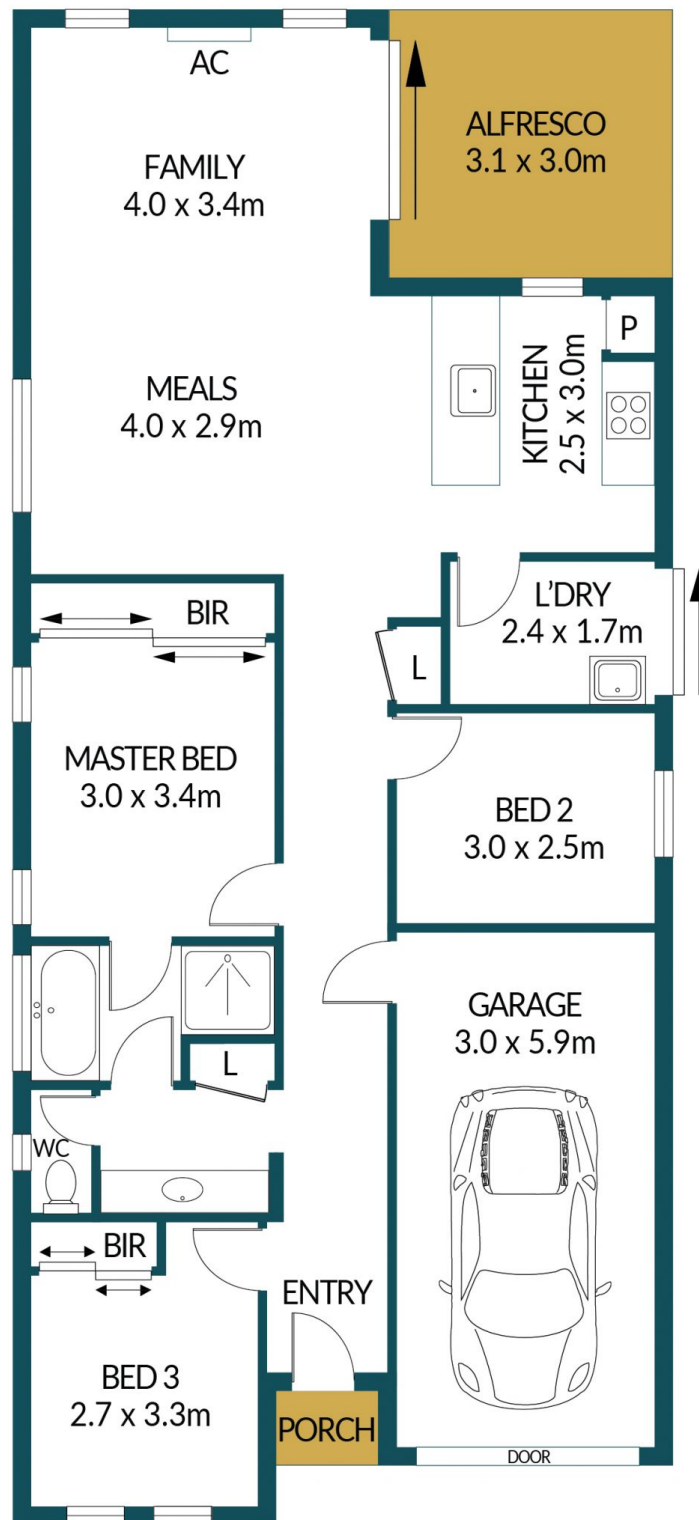
**Price** : \$ 455,000  
**Building Size** : 94 sqm  
**Land Size** : 323 sqm  
**View** : <https://www.edgerealty.com.au/sale/sa/north-north-east-suburbs/andrews-farm/residential/house/7656413>



**Mike Lao**  
0410390250



**Brendon Ly**  
0447888444



## 125 LAKESIDE DRIVE, ANDREWS FARM

### Disclaimer

Plans shown are for marketing purposes only. All dimensions are approximate and not to scale. They are subject to errors and inaccuracies and no liability will be accepted. Interested parties should make their own enquiries. Inclusions and exclusions must be confirmed in the Residential Contract.

### APPROXIMATE DIMENSIONS

LIVING:	94.7m <sup>2</sup>
GARAGE:	17.7m <sup>2</sup>
PORCH:	0.9m <sup>2</sup>
ALFRESCO:	9.3m <sup>2</sup>
TOTAL:	122.6m <sup>2</sup>