

26 Butterfield Road ELIZABETH PARK SA

3  1  1 

For an in-depth look at this home, please click on the 3D tour for a virtual walk-through or copy and paste this link into your browser

Virtual Tour Link:
<https://vtc.virtualltourscreator.com.au/share/c424d0de30e99fc8097461f9a4e8ea9e>

To submit an offer, please copy and paste this link into your browser:

<https://www.edgerealty.com.au/buying/make-an-offer/>

Mike Lao, Brendon Ly and Edge Realty RLA256385 are proud to present to the market this easy-care three-bedroom, one-bathroom Elizabeth Park Property. With pleasant living spaces, a great sized block and excellent transport links to get you to Adelaide and beyond, this is a great home for young families looking for fantastic

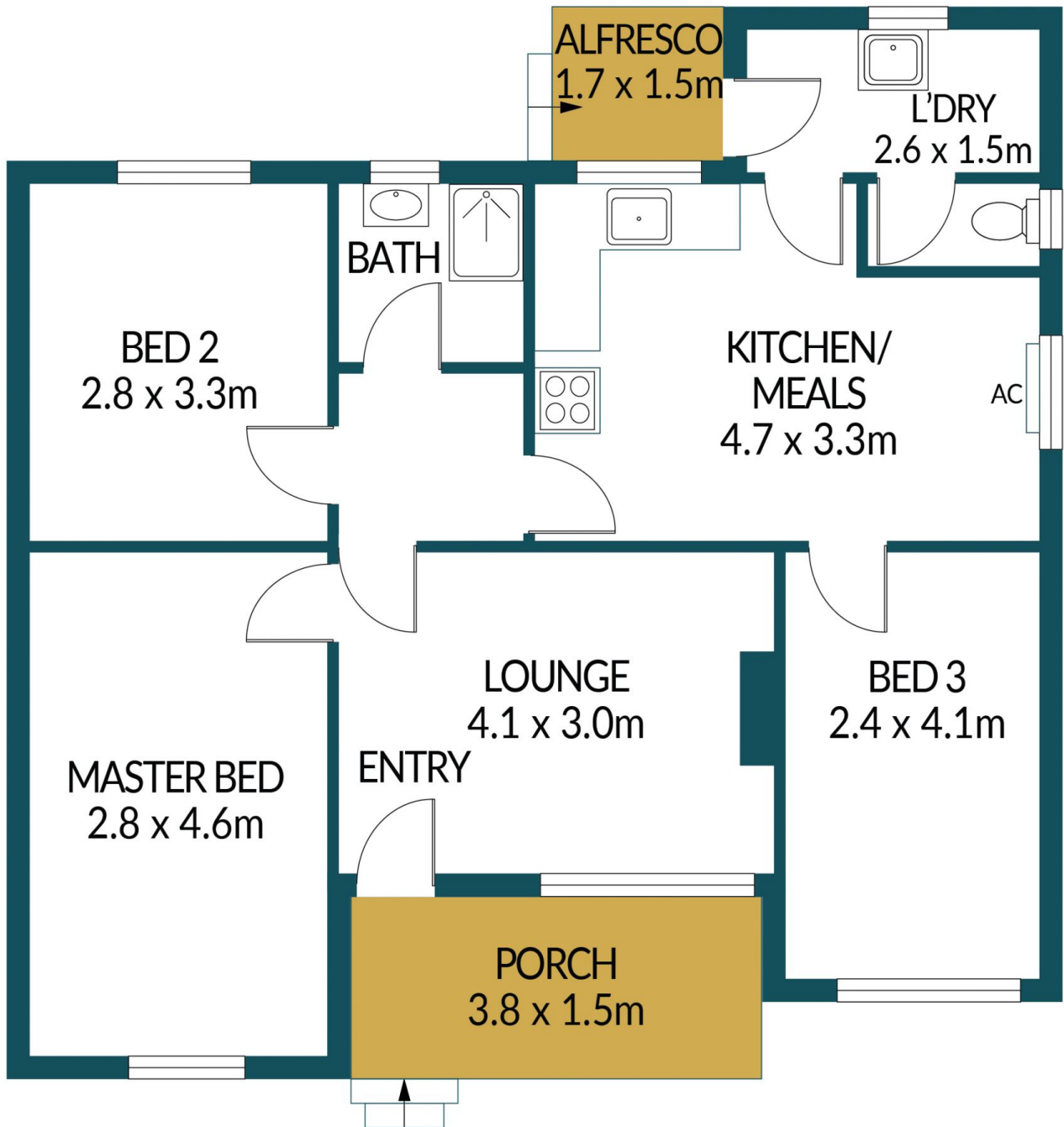
Price : \$ 338,000
Building Size : 73 sqm
Land Size : 669 sqm
View : <https://www.edgerealty.com.au/sale/sa/north-north-east-suburbs/elizabeth-park/residential/house/7674065>



Mike Lao
0410390250



Brendon Ly
0447888444



26 BUTTERFIELD ROAD, ELIZABETH PARK

Disclaimer

Plans shown are for marketing purposes only. All dimensions are approximate and not to scale. They are subject to errors and inaccuracies and no liability will be accepted. Interested parties should make their own enquiries. Inclusions and exclusions must be confirmed in the Residential Contract.

APPROXIMATE DIMENSIONS

LIVING:	73.2m ²
PORCH:	5.7m ²
ALFRESCO:	2.6m ²
TOTAL:	81.5m ²