



## 5 Parkview Walk ELIZABETH PARK SA

4  2  1 

\*For an in-depth look at this home, please click on the 3D tour for a virtual walk-through or copy and paste this link into your browser\*

Virtual Tour Link:  
<https://my.matterport.com/show/?m=EgUMgaheggX>

To submit an offer, please copy and paste this link into your browser:  
<https://www.edgerealty.com.au/buying/make-an-offer/>

Mike Lao, Brendon Ly and Edge Realty RLA256385 are proud to present to the market this contemporary, easy-care home that offers those who live here a life of comfort, ease and convenience. Whether you're looking for a place to call home, or a great investment opportunity with excellent ROI potential to expand your real estate portfolio, this charming house will surely delight and impress. The

**Price** : \$ 470,000  
**Building Size** : 109 sqm  
**Land Size** : 300 sqm  
**View** : <https://www.edgerealty.com.au/sale/sa/north-north-east-suburbs/elizabeth-park/residential/house/7674092>



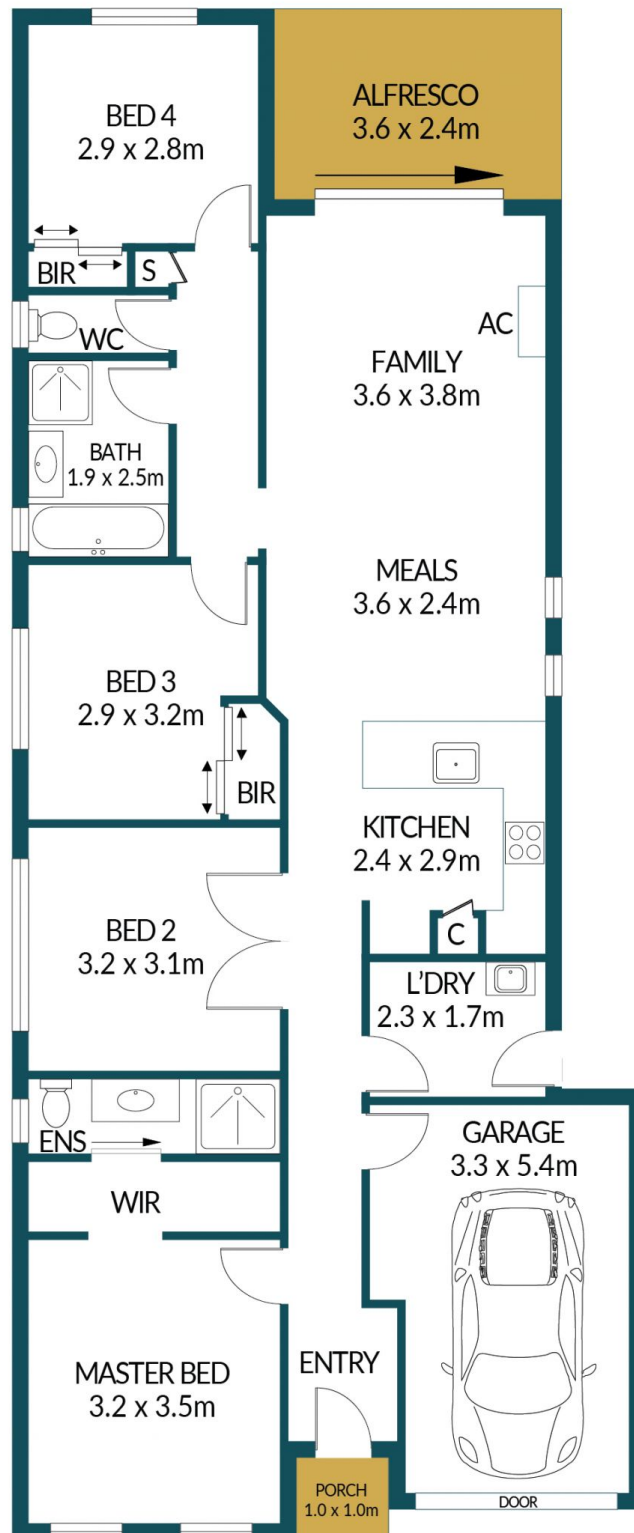
**Mike Lao**  
 0410390250



**Brendon Ly**  
 0447888444



WT



## 5 PARKVIEW WALK, ELIZABETH PARK

### Disclaimer

Plans shown are for marketing purposes only. All dimensions are approximate and not to scale. They are subject to errors and inaccuracies and no liability will be accepted. Interested parties should make their own enquiries. Inclusions and exclusions must be confirmed in the Residential Contract.

### APPROXIMATE DIMENSIONS

LIVING:	109.8m <sup>2</sup>
GARAGE:	16.6m <sup>2</sup>
PORCH:	1.0m <sup>2</sup>
ALFRESCO:	8.6m <sup>2</sup>
TOTAL:	136.0m <sup>2</sup>