



9 Paginton Crescent ELIZABETH EAST SA

3 1 1

For an in-depth look at this home, please click on the 3D tour for a virtual walk-through or copy and paste this link into your browser

Virtual Tour Link: <https://bit.ly/9paginton>

To submit an offer, please copy and paste this link into your browser:

<https://www.edgerealty.com.au/buying/make-an-offer/>

Mike Lao, Brendon Ly and Edge Realty RLA256385 are proud to present to the market this delightful 3-bedroom family home, perfectly positioned on a quiet cul-de-sac. An elevated front porch provides a quaint place to relax and welcome you home to step inside and revel in the space and comfort of this idyllic abode. The property is currently tenanted with a fixed lease of \$420 per week until 31/5/24.

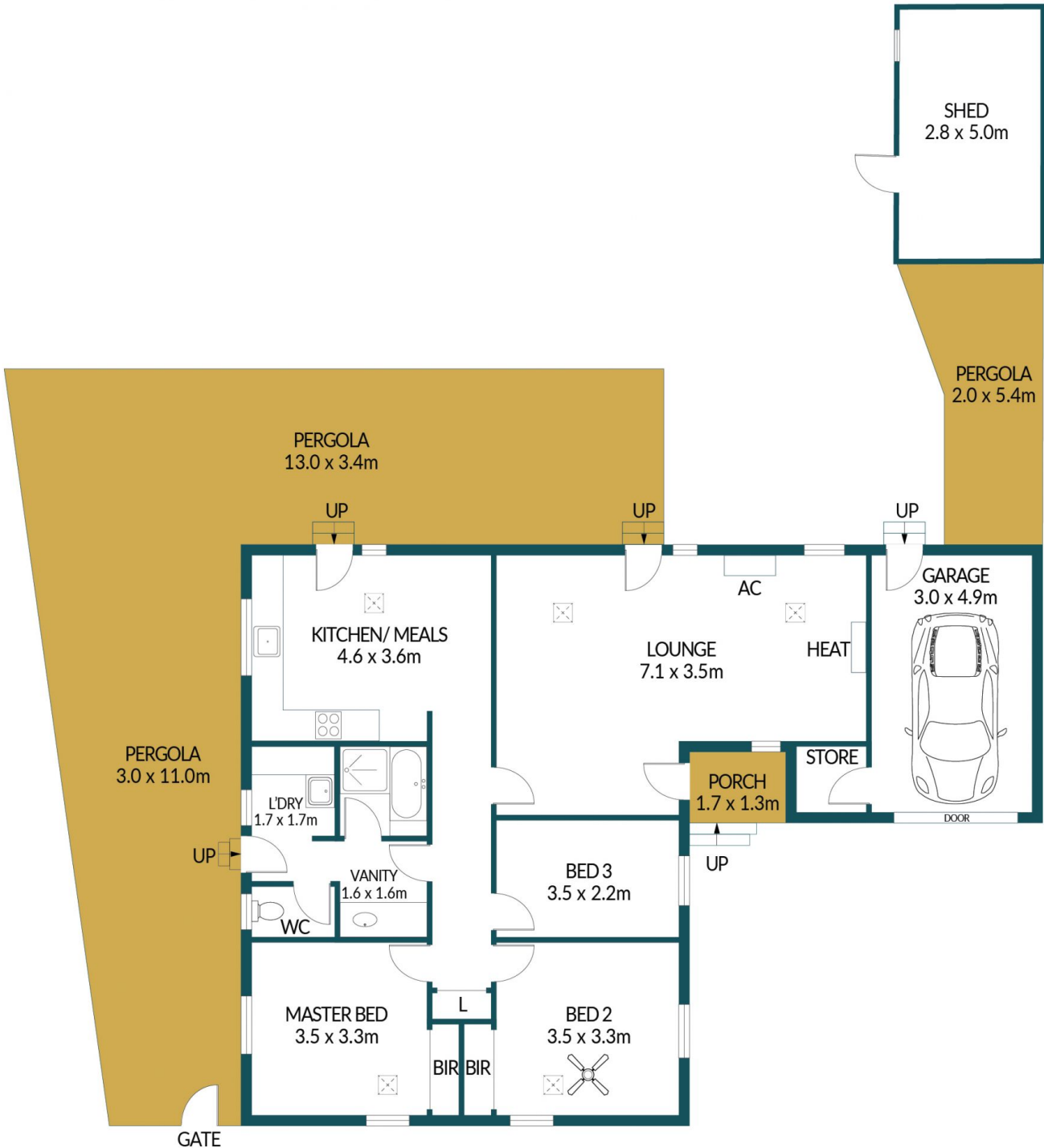
Price : \$ 480,000
Building Size : 110 sqm
Land Size : 624 sqm
View : <https://www.edgerealty.com.au/sale/sa/north-north-east-suburbs/elizabeth-east/residential/house/7686068>



Mike Lao
0410390250



Brendon Ly
0447888444



9 PAGINTON CRESCENT, ELIZABETH EAST

Disclaimer

Plans shown are for marketing purposes only. All dimensions are approximate and not to scale. They are subject to errors and inaccuracies and no liability will be accepted. Interested parties should make their own enquiries. Inclusions and exclusions must be confirmed in the Residential Contract.

APPROXIMATE DIMENSIONS

LIVING:	110.2m ²
GARAGE:	14.7m ²
PORCH:	2.2m ²
SHED:	15.0m ²
PERGOLA:	88.0m ²
TOTAL:	230.1m ²