



## 10 Marena Drive BRAHMA LODGE SA

3 1 3

\*For an in-depth look at this home, please click on the 3D tour for a virtual walk-through or copy and paste this link into your browser\*

Virtual Tour Link:  
<https://my.matterport.com/show/?m=iQDEHtDmm58>

To submit an offer, please copy and paste this link into your browser:  
<https://www.edgerealty.com.au/buying/make-an-offer/>

Mike Lao, Brendon Ly and Edge Realty RLA256385 are proud to present to the market your next family home standing proud on a generous 734sqm approx block. Are you a first home buyer looking for the perfect start? An investor seeking a lucrative opportunity? Or a growing family in search of a spacious and comfortable home? Look no further, because this property has it all!

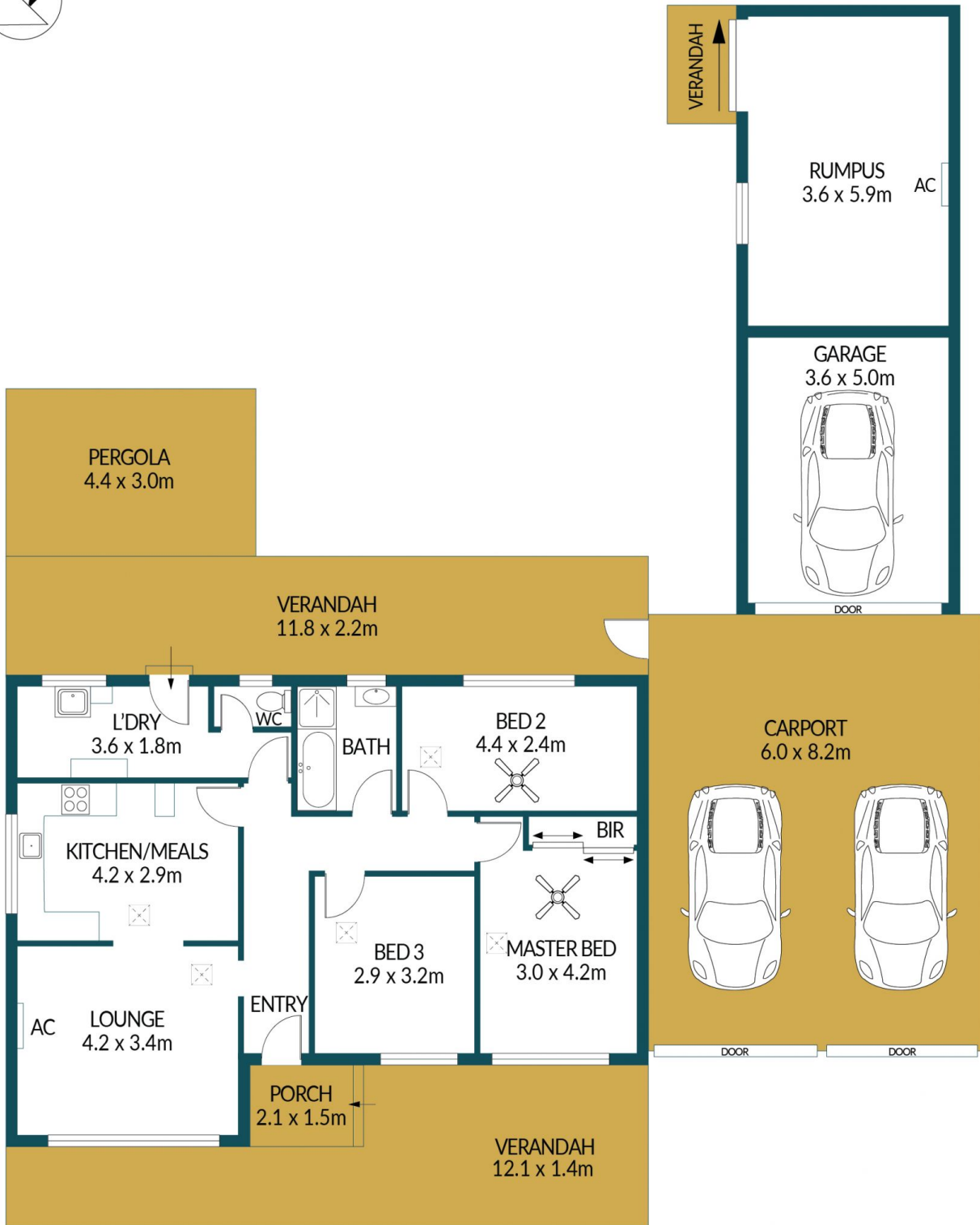
**Price** : \$ 565,000  
**Building Size** : 83 sqm  
**Land Size** : 734 sqm  
**View** : <https://www.edgerealty.com.au/sale/sa/north-north-east-suburbs/brama-lodge/residential/house/7695086>



**Mike Lao**  
0410390250



**Brendon Ly**  
0447888444



## 10 MARENA DRIVE, BRAHMA LODGE

### Disclaimer

Plans shown are for marketing purposes only. All dimensions are approximate and not to scale. They are subject to errors and inaccuracies and no liability will be accepted. Interested parties should make their own enquiries. Inclusions and exclusions must be confirmed in the Residential Contract.

### APPROXIMATE DIMENSIONS

LIVING:	83.8m <sup>2</sup>
GARAGE/RUMPUS:	39.2m <sup>2</sup>
VERANDAH/PORCH:	22.8m <sup>2</sup>
PERGOLA/CARPORT:	62.4m <sup>2</sup>
<b>TOTAL:</b>	<b>208.2m<sup>2</sup></b>