



1/180 Salisbury Highway SALISBURY SA

3 1 1

For an in-depth look at this home, please click on the 3D tour for a virtual walk-through or copy and paste this link into your browser

Virtual Tour Link: <https://bit.ly/180salisbury>

To submit an offer, please copy and paste this link into your browser:

<https://www.edgerealty.com.au/buying/make-an-offer/>

Mike Lao, Brendon Ly and Edge Realty RLA256385 are proud to present to the market this fantastic opportunity to own a delightful unit located at 1/180 Salisbury Highway. If you're looking to downsize or break free from the rental market and buy your first home, this low-maintenance abode is an absolute must-see. You will love living only moments from schools and shops, while a simple floorplan and no-maintenance gardens offer the best of easy-care

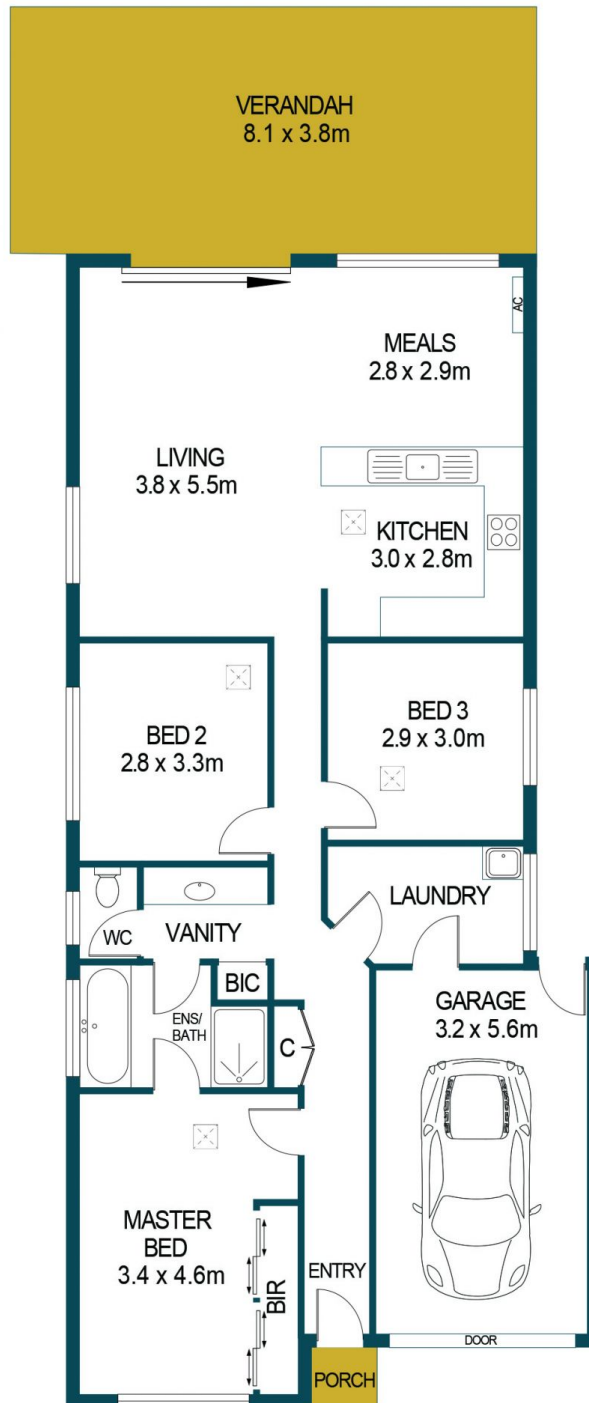
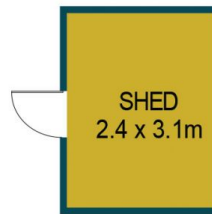
Price : \$ 460,000
Building Size : 97 sqm
Land Size : 245 sqm
View : <https://www.edgerealty.com.au/sale/sa/north-north-east-suburbs/salisbury/residential/house/7695113>



Mike Lao
0410390250



Brendon Ly
0447888444



1/180 SALISBURY HIGHWAY, SALISBURY

INT: 97m²
EXT: 56m²
TOTAL: 153m²

DISCLAIMER

PLANS SHOWN ARE FOR MARKETING PURPOSES ONLY, ALL DIMENSIONS ARE APPROXIMATE AND NOT TO SCALE. THEY ARE SUBJECT TO ERRORS AND INACCURACIES AND NO LIABILITY WILL BE ACCEPTED. INTERESTED PARTIES SHOULD MAKE THEIR OWN ENQUIRIES.