



53 Lakeside Drive ANDREWS FARM SA

4  2  2 

For an in-depth look at this home, please click on the 3D tour for a virtual walk-through or copy and paste this link into your browser

Virtual Tour Link:
<https://my.matterport.com/show/?m=6mQANfJXpt6>

To submit an offer, please copy and paste this link into your browser:
<https://www.edgerealty.com.au/buying/make-an-offer/>

Mike Lao, Tyson Bennett and Edge Realty RLA256385 are proud to present to the market this beautiful family home ready for you to simply move in and start making memories. From the beautiful curb appeal and idyllic corner block to the quality finishes and fixtures throughout, this is a home you will be proud to call your own.

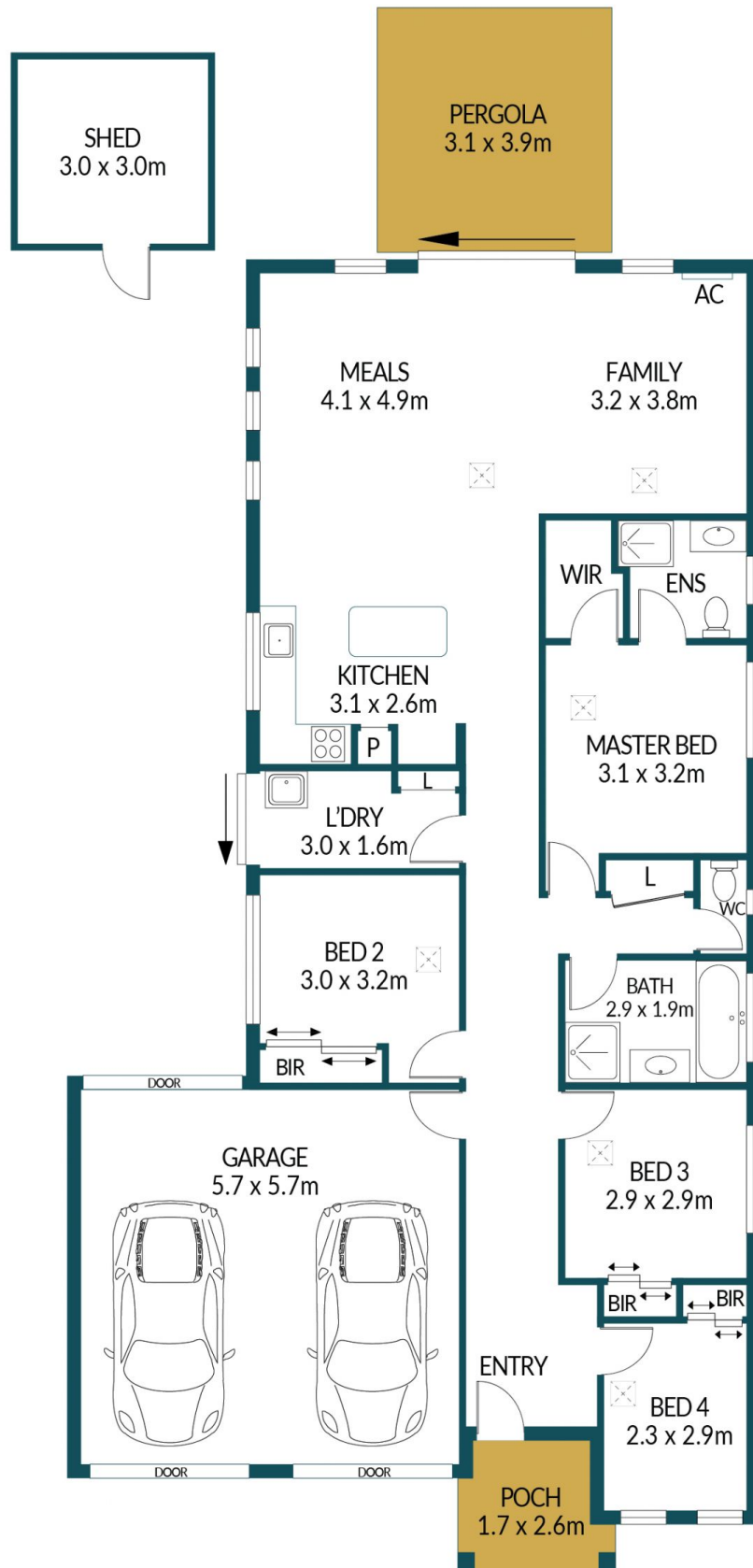
Price : \$ 520,000
Building Size : 91 sqm
Land Size : 448 sqm
View : <https://www.edgerealty.com.au/sale/sa/north-north-east-suburbs/andrews-farm/residential/house/7704022>



Mike Lao
0410390250



Tyson Bennett
0437161997



53 LAKESIDE DRIVE, ANDREWS FARM

Disclaimer

Plans shown are for marketing purposes only. All dimensions are approximate and not to scale. They are subject to errors and inaccuracies and no liability will be accepted. Interested parties should make their own enquiries. Inclusions and exclusions must be confirmed in the Residential Contract.

APPROXIMATE DIMENSIONS

LIVING:	91.7m ²
GARAGE:	32.5m ²
PORCH/SHED:	13.4m ²
PERGOLA:	12.1m ²
TOTAL:	149.7m ²