



## 8 Katherine Crescent CRAIGMORE SA

4 2 2

\*For an in-depth look at this home, please click on the 3D tour for a virtual walk-through or copy and paste this link into your browser\*

Virtual Tour Link:  
<https://my.matterport.com/show/?m=R4RLkM7J3kg>

To submit an offer, please copy and paste this link into your browser:  
<https://www.edgerealty.com.au/buying/make-an-offer/>

Mike Lao, Tyson Bennett and Edge Realty RLA256385 are proud to present to the market this grand Henley Homes property with spectacular views over the outer harbour and surrounding countryside. With four bedrooms, multiple living areas and an in-ground pool, there is ample room for the whole family to unwind, socialise and bask in the joys of daily life.

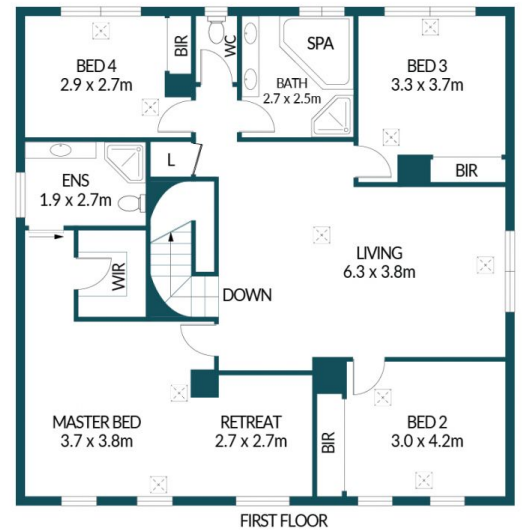
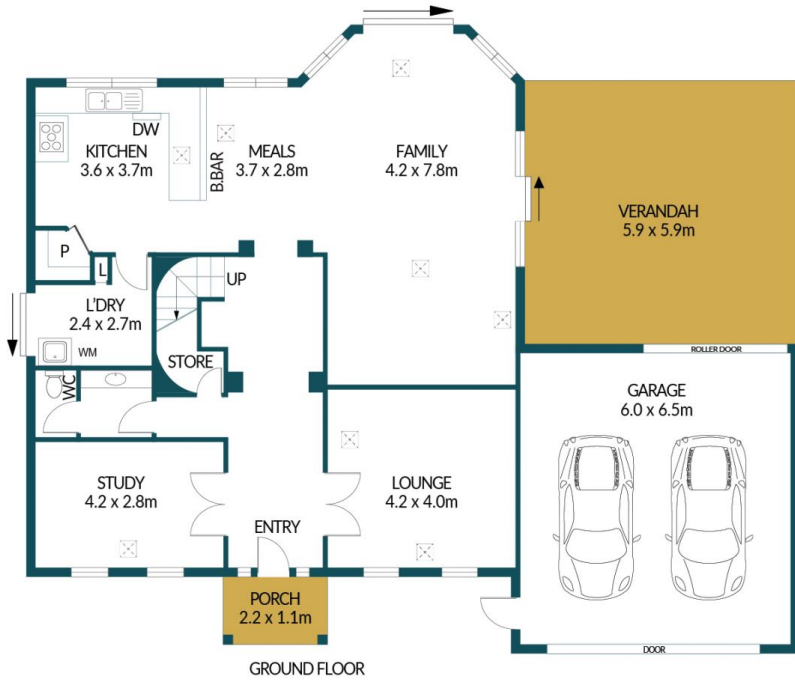
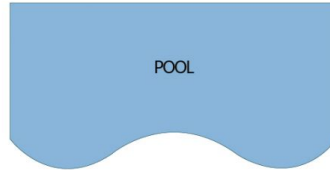
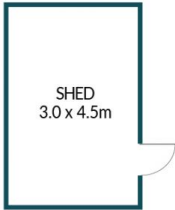
**Building Size** : 250 sqm  
**Land Size** : 630 sqm  
**View** : <https://www.edgerealty.com.au/sale/sa/north-north-east-suburbs/craigmore/residential/house/7704124>



**Mike Lao**  
0410390250



**Tyson Bennett**  
0437161997



## 8 KATHERINE CRESCENT, CRAIGMORE

### Disclaimer

Plans shown are for marketing purposes only. All dimensions are approximate and not to scale. They are subject to errors and inaccuracies and no liability will be accepted. Interested parties should make their own enquiries. Inclusions and exclusions must be confirmed in the Residential Contract.

### APPROXIMATE DIMENSIONS

LIVING:	250.7m <sup>2</sup>
GARAGE:	39.0m <sup>2</sup>
VERANDAH:	34.8m <sup>2</sup>
PORCH/SHED:	15.9m <sup>2</sup>
TOTAL:	340.4m <sup>2</sup>